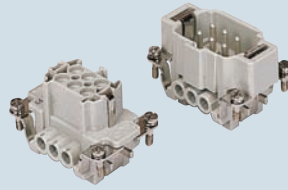


enclosures:  
size "44.27" page:

C-TYPE IP65/IP66 ..... 240 - 243  
 C7 IP67, single lever ..... 274  
 V-TYPE IP65/IP66, single lever 280/284 - 286  
 BIG hoods ..... 304 - 306  
 T-TYPE IP65 insulating ..... 326 - 327  
 T-TYPE / W IP66 insulating ..... 336 - 337  
 HYGIENIC T-TYPE / H IP66/IP69 ..... 350 - 351  
 HYGIENIC T-TYPE / C IP66/IP69, -50 °C 358 - 359  
 W-TYPE for aggressive environments ..... 373  
 EMC ..... 392  
 central lever ..... 404 - 405  
 IP68 ..... 420 - 423  
 LS-TYPE ..... 450 - 451

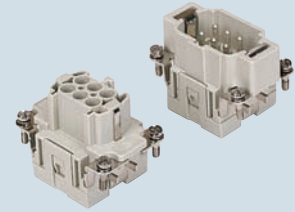
panel supports: page:  
COB ..... 462 - 463

inserts,  
screw terminal connections



silver plated contacts

inserts,  
spring terminal connections

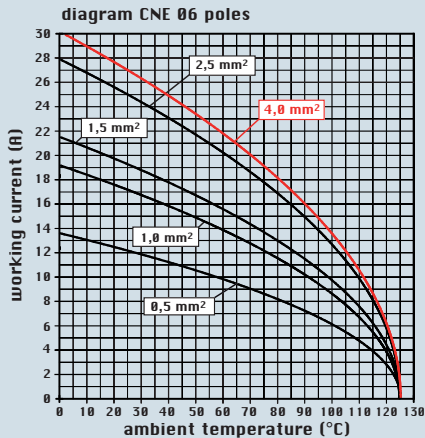
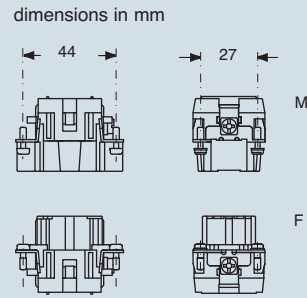
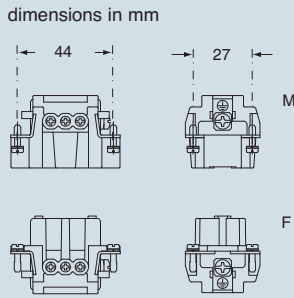


silver plated contacts

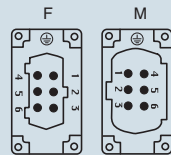
description	part No.
indirect, with plate 1) female inserts with female contacts male inserts with male contacts	CNEF 06 T CNEM 06 T
direct, without plate 2) female inserts with female contacts male inserts with male contacts	CNEF 06 TX CNEM 06 TX
spring terminal female inserts with female contacts male inserts with male contacts	CSEF 06 CSEM 06

description	part No.
indirect, with plate 1) female inserts with female contacts male inserts with male contacts	CNEF 06 T CNEM 06 T
direct, without plate 2) female inserts with female contacts male inserts with male contacts	CNEF 06 TX CNEM 06 TX
spring terminal female inserts with female contacts male inserts with male contacts	CSEF 06 CSEM 06

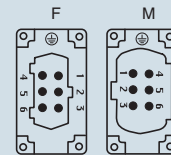
- characteristics according to EN 61984:  
**16A 500V 6kV 3**  
**16A 400/690V 6kV 2**  
 - cUL - UL for USA and Canada (CNE), UL (CSE), CSA, CCC \*, GL, EAC certified  
 \* CQC certification being applied for  
 - rated voltage according to UL/CSA: 600V  
 - insulation resistance:  $\geq 10 \text{ G}\Omega$   
 - ambient temperature limit: -40 °C ... +125 °C  
 - are made of self-extinguishing thermoplastic resin UL 94 V0  
 - mechanical life:  $\geq 500$  cycles  
 - contact resistance:  $\leq 1 \text{ m}\Omega$  (CNE) -  $\leq 3 \text{ m}\Omega$  (CSE)  
 - for maximum current load, see the following load curves inserts, for more information see page 559



contacts side (front view)

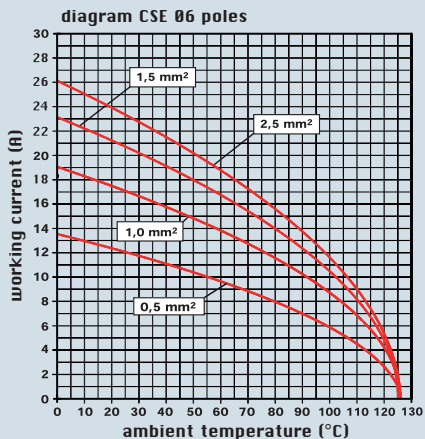


contacts side (front view)



- inserts with plate for section conductors: 0,5 - 4 mm<sup>2</sup> - AWG 20 - 12
- inserts without plate for section conductors: 0,25 - 2,5 mm<sup>2</sup> - AWG 24 - 14
- conductors stripping length: 7 mm
- terminal screw torque: 0,5 Nm (4.4 lb.in), for more information see page 34 and 35

- inserts for section conductors: 0,14 - 2,5 mm<sup>2</sup> - AWG 26 - 14
- conductors stripping length: 9...11 mm



1) for unprepared conductors

2) for bush terminal conductors

connection with spring terminal

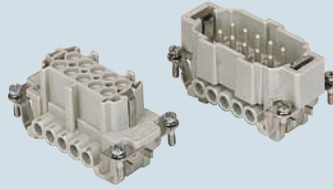
dimensions shown are not binding and may be changed without notice

enclosures:  
size "57.27" page:

C-TYPE IP65/IP66 ..... 244 - 249  
C7 IP67, two levers ..... 275  
V-TYPE IP65/IP66, single lever 281/288 - 291  
BIG hoods ..... 308 - 311  
T-TYPE IP65 insulating ..... 328 - 329  
T-TYPE / W IP66 insulating ..... 338 - 339  
HYGIENIC T-TYPE / H IP66/IP69 ..... 352 - 353  
HYGIENIC T-TYPE / C IP66/IP69, -50 °C 360 - 361  
W-TYPE for aggressive environments ..... 374  
EMC ..... 393  
central lever ..... 406 - 407  
IP68 ..... 424 - 427  
LS-TYPE ..... 452 - 453

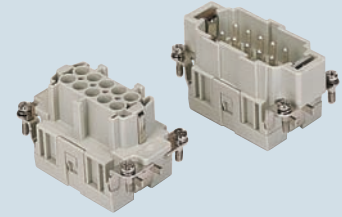
panel supports: page:  
COB ..... 462 - 463

inserts,  
screw terminal connections



silver plated contacts

inserts,  
spring terminal connections

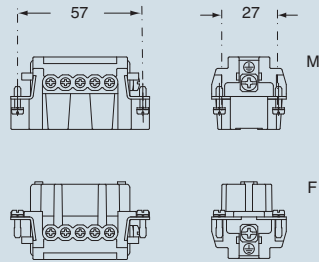


silver plated contacts

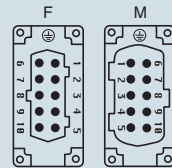
description	part No.	part No.
indirect, with plate 1) female inserts with female contacts male inserts with male contacts	CNEF 10 T CNEM 10 T	
direct, without plate 2) female inserts with female contacts male inserts with male contacts	CNEF 10 TX CNEM 10 TX	
spring terminal female inserts with female contacts male inserts with male contacts		CSEF 10 CSEM 10

- characteristics according to EN 61984:  
**16A 500V 6kV 3**  
**16A 400/690V 6kV 2**
- cUL - UL for USA and Canada (CNE), UL (CSE), CSA, CCC \*, GL, EAC certified
- \* CQC certification being applied for
- rated voltage according to UL/CSA: 600V
- insulation resistance:  $\geq 10 \text{ G}\Omega$
- ambient temperature limit:  $-40 \text{ }^\circ\text{C} \dots +125 \text{ }^\circ\text{C}$
- are made of self-extinguishing thermoplastic resin UL 94 V0
- mechanical life:  $\geq 500$  cycles
- contact resistance:  $\leq 1 \text{ m}\Omega$  (CNE) -  $\leq 3 \text{ m}\Omega$  (CSE)
- for maximum current load, see the following load curves inserts, for more information see page 559

dimensions in mm

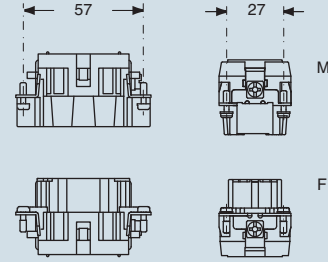


contacts side (front view)

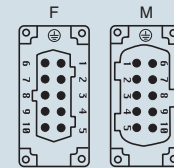


- inserts with plate for section conductors:  
0,5 - 4 mm<sup>2</sup> - AWG 20 - 12
- inserts without plate for section conductors:  
0,25 - 2,5 mm<sup>2</sup> - AWG 24 - 14
- conductors stripping length: 7 mm
- terminal screw torque: 0,5 Nm (4.4 lb.in), for more information see page 34 and 35

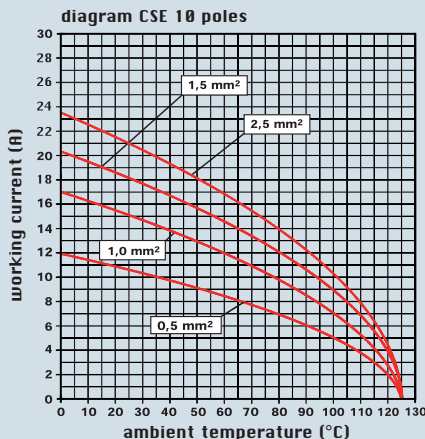
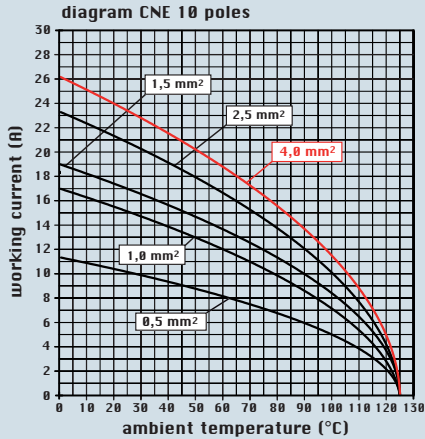
dimensions in mm



contacts side (front view)



- inserts for section conductors:  
0,14 - 2,5 mm<sup>2</sup> - AWG 26 - 14
- conductors stripping length: 9...11 mm



1) for unprepared conductors

2) for bush terminal conductors

connection with spring terminal

dimensions shown are not binding and may be changed without notice

enclosures:  
size "77.27" page:

C-TYPE IP65/IP66 .....	250 - 256
C7 IP67, two levers .....	276
V-TYPE IP65/IP66, single lever .....	282/292 - 295
BIG hoods .....	312 - 315
T-TYPE IP65 insulating .....	330 - 331
T-TYPE / W IP66 insulating .....	340 - 341
HYGIENIC T-TYPE / H IP66/IP69 .....	354 - 355
HYGIENIC T-TYPE / C IP66/IP69, -50 °C .....	362 - 363
W-TYPE for aggressive environments .....	375
EMC .....	394
central lever .....	408 - 409
IP68 .....	428 - 431
LS-TYPE .....	454 - 455

panel supports: page:  
COB .....

description

indirect, with plate 1)  
female inserts with female contacts  
male inserts with male contacts

direct, without plate 2)  
female inserts with female contacts  
male inserts with male contacts

spring terminal  
female inserts with female contacts  
male inserts with male contacts

- characteristics according to EN 61984:  
**16A 500V 6kV 3**  
**16A 400/690V 6kV 2**  
- cUL - UL for USA and Canada (CNE), UL (CSE), CSA, CCC \*, GL, EAC certified  
\* CQC certification being applied for  
- rated voltage according to UL/CSA: 600V  
- insulation resistance:  $\geq 10 \text{ G}\Omega$   
- ambient temperature limit:  $-40 \text{ }^\circ\text{C} \dots +125 \text{ }^\circ\text{C}$   
- are made of self-extinguishing thermoplastic resin UL 94 V0  
- mechanical life:  $\geq 500$  cycles  
- contact resistance:  $\leq 1 \text{ m}\Omega$  (CNE) -  $\leq 3 \text{ m}\Omega$  (CSE)  
- for maximum current load, see the following load curves inserts, for more information see page 559

diagram CNE 16 poles

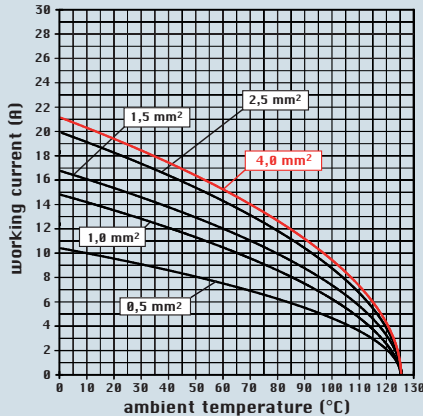
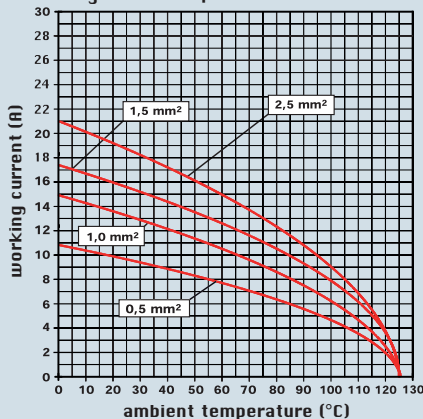
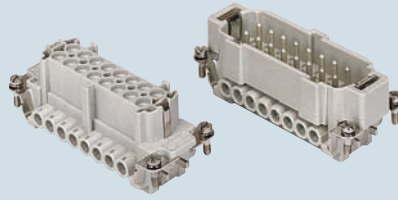


diagram CSE 16 poles



dimensions shown are not binding and may be changed without notice

inserts,  
screw terminal connections



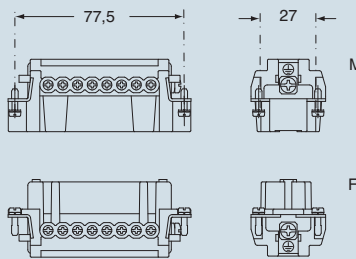
silver plated contacts

part No.

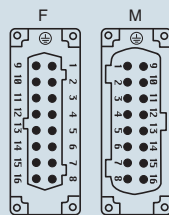
CNEF 16 T  
CNEM 16 T

CNEF 16 TX  
CNEM 16 TX

dimensions in mm

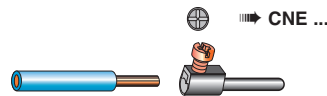


contacts side (front view)

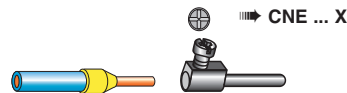


- inserts with plate for section conductors:  
0,5 - 4 mm<sup>2</sup> - AWG 20 - 12  
- inserts without plate for section conductors:  
0,25 - 2,5 mm<sup>2</sup> - AWG 24 - 14  
- conductors stripping length: 7 mm  
- terminal screw torque: 0,5 Nm (4.4 lb.in), for more information see page 34 and 35

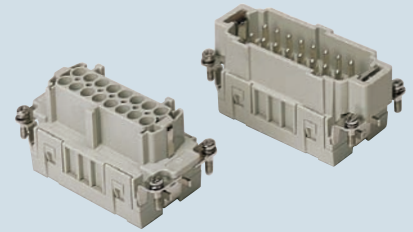
1) for unprepared conductors



2) for bush terminal conductors



inserts,  
spring terminal connections

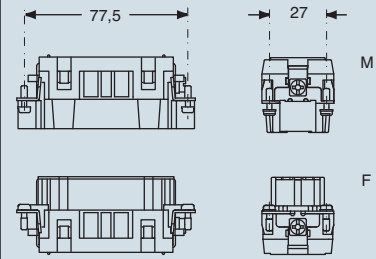


silver plated contacts

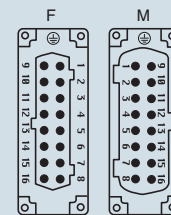
part No.

CSEF 16  
CSEM 16

dimensions in mm

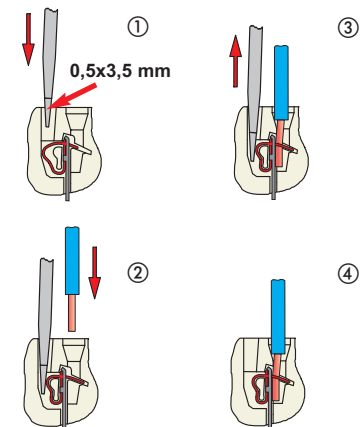


contacts side (front view)



- inserts for section conductors:  
0,14 - 2,5 mm<sup>2</sup> - AWG 26 - 14  
- conductors stripping length: 9...11 mm

connection with spring terminal

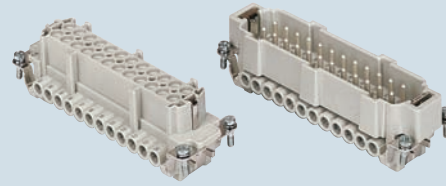


enclosures:  
 size "104.27" page:

C-TYPE IP65/IP66 ..... 258 - 266  
 C7 IP67, two levers ..... 277  
 V-TYPE IP65/IP66, single lever 283/296 - 299  
 BIG hoods ..... 316 - 319  
 T-TYPE IP65 insulating ..... 332 - 333  
 T-TYPE / W IP66 insulating ..... 342 - 343  
 HYGIENIC T-TYPE / H IP66/IP69 ..... 356 - 357  
 HYGIENIC T-TYPE / C IP66/IP69, -50 °C 364 - 365  
 W-TYPE for aggressive environments ..... 376  
 EMC ..... 395  
 central lever ..... 410 - 412  
 IP68 ..... 432 - 435  
 LS-TYPE ..... 456 - 457

panel supports: page:  
 COB ..... 462 - 463

inserts,  
 screw terminal connections



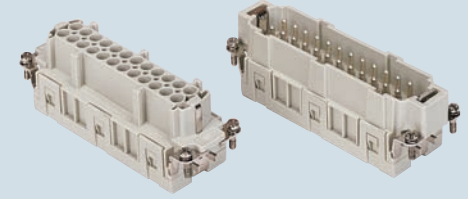
silver plated contacts

part No.

CNEF 24 T  
 CNEM 24 T

CNEF 24 TX  
 CNEM 24 TX

inserts,  
 spring terminal connections



silver plated contacts

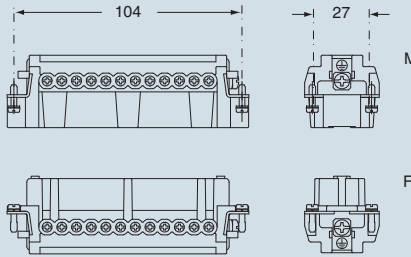
part No.

CSEF 24  
 CSEM 24

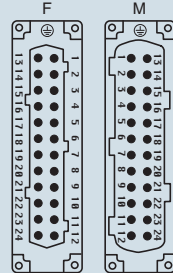
description	part No.
indirect, with plate 1) female inserts with female contacts male inserts with male contacts	CNEF 24 T CNEM 24 T
direct, without plate 2) female inserts with female contacts male inserts with male contacts	CNEF 24 TX CNEM 24 TX
spring terminal female inserts with female contacts male inserts with male contacts	CSEF 24 CSEM 24

- characteristics according to EN 61984:  
**16A 500V 6kV 3**  
**16A 400/690V 6kV 2**
- cUL - UL for USA and Canada (CNE), UL (CSE), CSA, CCC \*, GL, EAC certified
- \* CQC certification being applied for
- rated voltage according to UL/CSA: 600V
- insulation resistance:  $\geq 10 \text{ G}\Omega$
- ambient temperature limit:  $-40 \text{ }^\circ\text{C} \dots +125 \text{ }^\circ\text{C}$
- are made of self-extinguishing thermoplastic resin UL 94 V0
- mechanical life:  $\geq 500$  cycles
- contact resistance:  $\leq 1 \text{ m}\Omega$  (CNE) -  $\leq 3 \text{ m}\Omega$  (CSE)
- for maximum current load, see the following load curves inserts, for more information see page 559

dimensions in mm

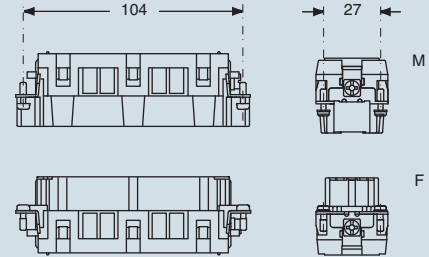


contacts side (front view)

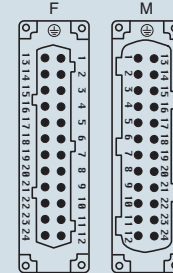


- inserts with plate for section conductors:  
 0,5 - 4 mm<sup>2</sup> - AWG 20 - 12
- inserts without plate for section conductors:  
 0,25 - 2,5 mm<sup>2</sup> - AWG 24 - 14
- conductors stripping length: 7 mm
- terminal screw torque: 0,5 Nm (4.4 lb.in), for more information see page 34 and 35

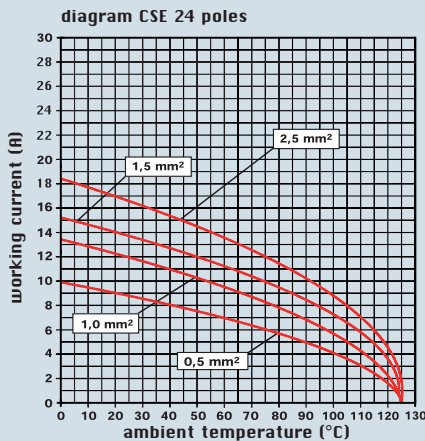
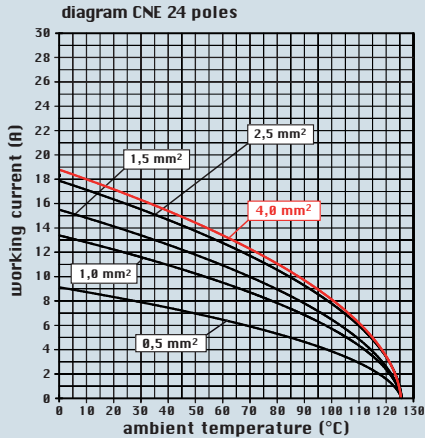
dimensions in mm



contacts side (front view)



- inserts for section conductors:  
 0,14 - 2,5 mm<sup>2</sup> - AWG 26 - 14
- conductors stripping length: 9...11 mm



1) for unprepared conductors

2) for bush terminal conductors

connection with spring terminal

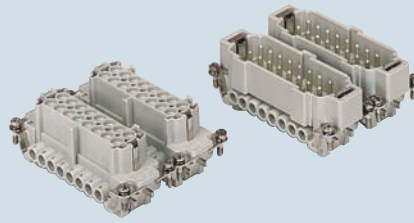
dimensions shown are not binding and may be changed without notice

enclosures:  
size "77.62"

page:

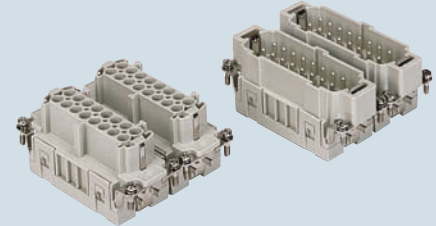
C-TYPE IP65/IP66 ..... 267 - 270  
W-TYPE for aggressive environments ..... 377

inserts,  
screw terminal connections



silver  
plated  
contacts

inserts,  
spring terminal connections



silver  
plated  
contacts

description	part No.	part No.	part No.	part No.
indirect, with plate 1) female inserts, No. (1-16) and (17-32) male inserts, No. (1-16) and (17-32)	<b>CNEF 16 T</b> <b>CNEM 16 T</b>	<b>CNEF 16 TN</b> <b>CNEM 16 TN</b>		
direct, without plate 2) female inserts, No. (1-16) and (17-32) male inserts, No. (1-16) and (17-32)	<b>CNEF 16 TX</b> <b>CNEM 16 TX</b>	<b>CNEF 16 TXN</b> <b>CNEM 16 TXN</b>		
spring terminal female inserts, No. (1-16) and (17-32) male inserts, No. (1-16) and (17-32)			<b>CSEF 16</b> <b>CSEM 16</b>	<b>CSEF 16 N</b> <b>CSEM 16 N</b>

- characteristics according to EN 61984:  
**16A 500V 6kV 3**  
**16A 400/690V 6kV 2**
- cUL - UL for USA and Canada (CNE), UL (CSE), CSA, CCC \*, GL, EAC certified
- \* CQC certification being applied for
- rated voltage according to UL/CSA: 600V
- insulation resistance:  $\geq 10 \text{ G}\Omega$
- ambient temperature limit:  $-40 \text{ }^\circ\text{C} \dots +125 \text{ }^\circ\text{C}$
- are made of self-extinguishing thermoplastic resin UL 94 V0
- mechanical life:  $\geq 500$  cycles
- contact resistance:  $\leq 1 \text{ m}\Omega$  (CNE) -  $\leq 3 \text{ m}\Omega$  (CSE)
- for maximum current load, see the following load curves inserts, for more information see page 559

diagram CNE 32 poles

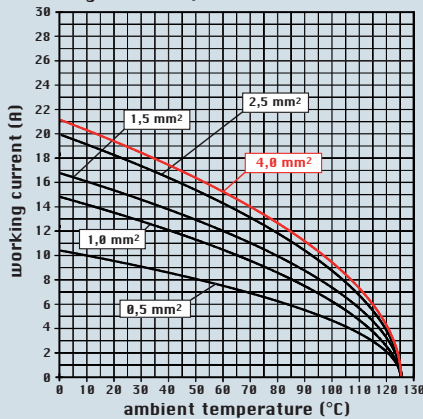
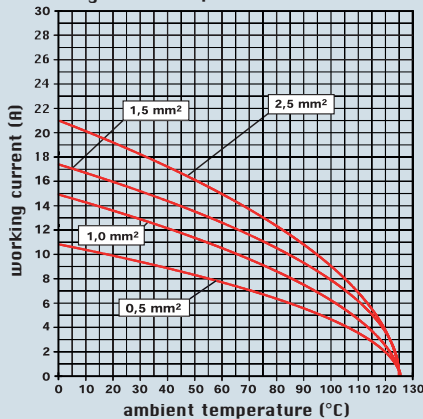
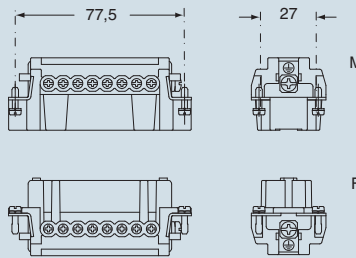


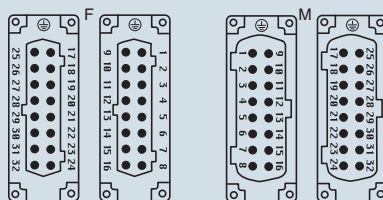
diagram CSE 32 poles



dimensions in mm

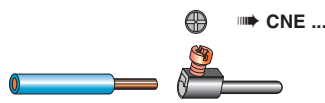


contacts side (front view)

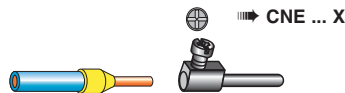


- inserts with plate for section conductors:  
0,5 - 4 mm<sup>2</sup> - AWG 20 - 12
- inserts without plate for section conductors:  
0,25 - 2,5 mm<sup>2</sup> - AWG 24 - 14
- conductors stripping length: 7 mm
- terminal screw torque: 0,5 Nm (4.4 lb.in), for more information see page 34 and 35

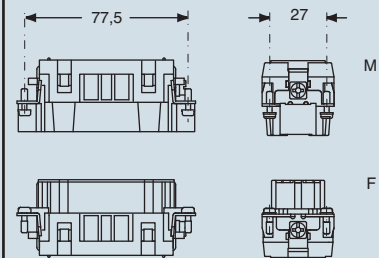
1) for unprepared conductors



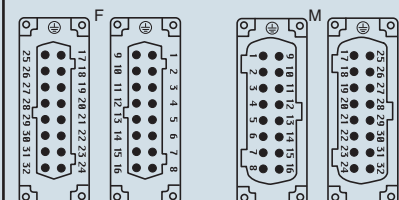
2) for bush terminal conductors



dimensions in mm

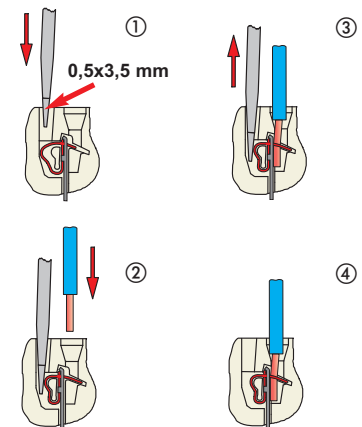


contacts side (front view)



- inserts for section conductors:  
0,14 - 2,5 mm<sup>2</sup> - AWG 26 - 14
- conductors stripping length: 9...11 mm

connection with spring terminal

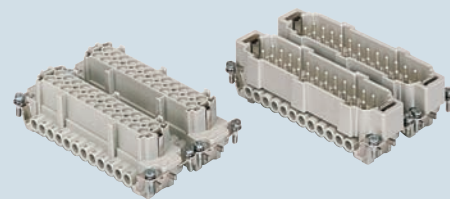


dimensions shown are not binding and may be changed without notice

enclosures:  
size "104.62" page:

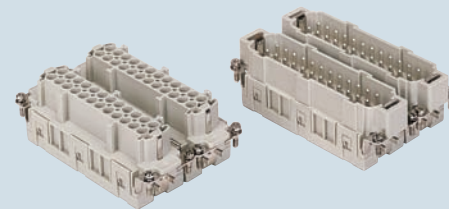
C-TYPE IP65/IP66..... 271  
W-TYPE for aggressive environments 378

inserts,  
screw terminal connections



silver plated contacts

inserts,  
spring terminal connections



silver plated contacts

description	part No.	part No.	part No.	part No.
indirect, with plate 1) female inserts, No. (1-24) and (25-48) male inserts, No. (1-24) and (25-48)	<b>CNEF 24 T</b> <b>CNEM 24 T</b>	<b>CNEF 24 TN</b> <b>CNEM 24 TN</b>		
direct, without plate 2) female inserts, No. (1-24) and (25-48) male inserts, No. (1-24) and (25-48)	<b>CNEF 24 TX</b> <b>CNEM 24 TX</b>	<b>CNEF 24 TXN</b> <b>CNEM 24 TXN</b>		
spring terminal female inserts, No. (1-24) and (25-48) male inserts, No. (1-24) and (25-48)			<b>CSEF 24</b> <b>CSEM 24</b>	<b>CSEF 24 N</b> <b>CSEM 24 N</b>

- characteristics according to EN 61984:  
**16A 500V 6kV 3**  
**16A 400/690V 6kV 2**
- cUL - UL for USA and Canada (CNE), UL (CSE), CSA, CCC \*, GL, EAC certified
- \* CQC certification being applied for
- rated voltage according to UL/CSA: 600V
- insulation resistance:  $\geq 10 \text{ G}\Omega$
- ambient temperature limit:  $-40 \text{ }^\circ\text{C} \dots +125 \text{ }^\circ\text{C}$
- are made of self-extinguishing thermoplastic resin UL 94 V0
- mechanical life:  $\geq 500$  cycles
- contact resistance:  $\leq 1 \text{ m}\Omega$  (CNE) -  $\leq 3 \text{ m}\Omega$  (CSE)
- for maximum current load, see the following load curves inserts, for more information see page 559

diagram CNE 48 poles

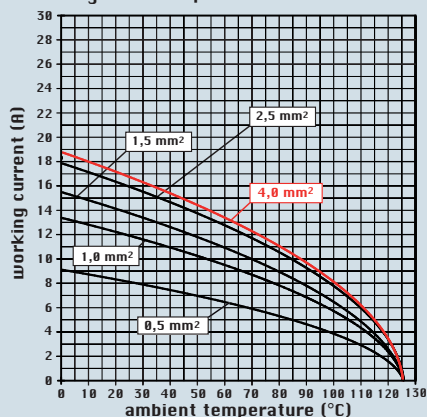
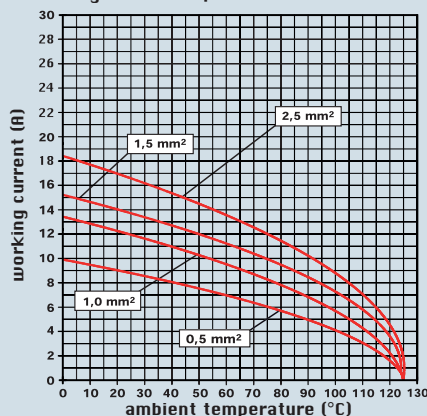
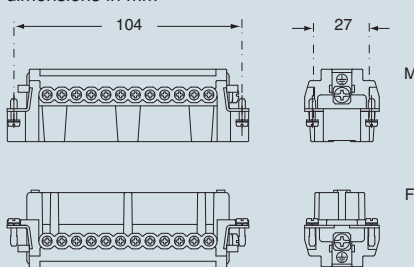


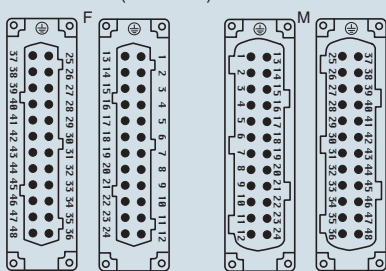
diagram CSE 48 poles



dimensions in mm



contacts side (front view)

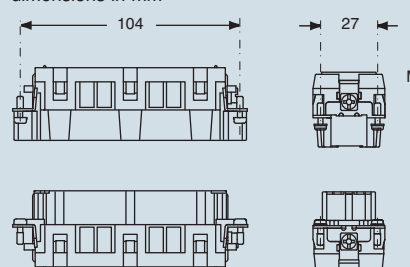


- inserts with plate for section conductors:  
0,5 - 4 mm<sup>2</sup> - AWG 20 - 12
- inserts without plate for section conductors:  
0,25 - 2,5 mm<sup>2</sup> - AWG 24 - 14
- conductors stripping length: 7 mm
- terminal screw torque: 0,5 Nm (4.4 lb.in), for more information see page 34 and 35

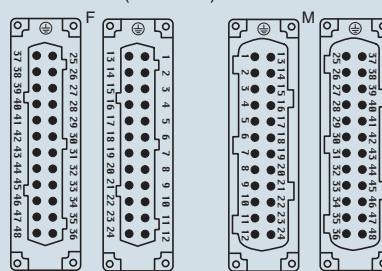
1) for unprepared conductors

2) for bush terminal conductors

dimensions in mm



contacts side (front view)



- inserts for section conductors:  
0,14 - 2,5 mm<sup>2</sup> - AWG 26 - 14
- conductors stripping length: 9...11 mm

connection with spring terminal

dimensions shown are not binding and may be changed without notice