

# CD inserts

## Special voltages

If all the contacts are used, the CD inserts series connectors may be used with voltage up to 250V (first column) pollution degree 3 in accordance with the standard EN 61984.

If the number of contacts is reduced and the contacts accordingly assigned, these connectors may be used at higher voltages.

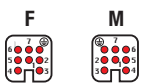
This is possible because the decrease in the number of contacts leads to an increase in clearances (distances in air) and creepage distances (distances along the surface)

When the contacts are arranged as shown below, the inserts may be used at rated voltage of 500V (second column) pollution degree 3 in accordance with the standard EN 61984.

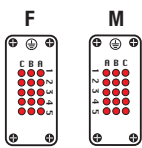
for use up to 250V  
pollution degree 3

diagrams  
contacts side (front view)

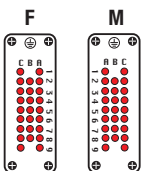
### CD - 7 + ⊕



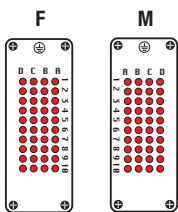
### CD - 15 + ⊕



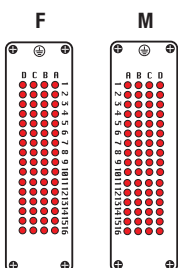
### CD - 25 + ⊕



### CD - 40 + ⊕



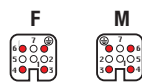
### CD - 64 + ⊕



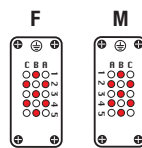
for use up to 500V  
pollution degree 3

diagrams  
contacts side (front view)

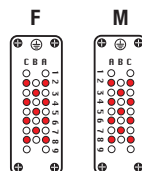
### CD - 3 + ⊕



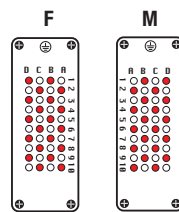
### CD - 7 + ⊕



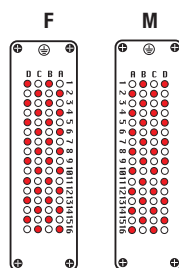
### CD - 11 + ⊕



### CD - 20 + ⊕



### CD - 32 + ⊕

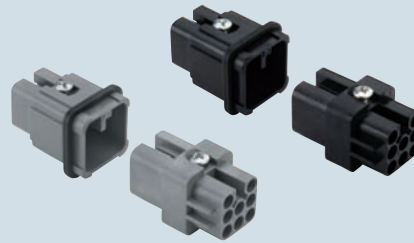


#### Legend:

- working contact
- without contact
- M = male insert
- F = female insert

enclosures:  
size "21.21" page:  
insulating type ..... 221 - 222

inserts, crimp connections



10A crimp contacts  
silver and gold plated

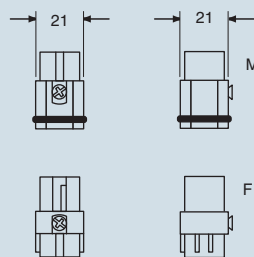


description	part No.	part No.	part No.	part No.
without contacts (to be ordered separately) female inserts for female contacts, grey and black <sup>1)</sup> male inserts for male contacts, grey and black	grey <b>CDF 07</b> <b>CDM 07</b>	black <b>CDF 07 N</b> <b>CDM 07 N</b>		
10A female contacts 0,14-0,37 mm <sup>2</sup> AWG 26-22 identification No. 1 0,5 mm <sup>2</sup> AWG 20 identification No. 2 0,75 mm <sup>2</sup> AWG 18 identification No. ② 1 mm <sup>2</sup> AWG 18 identification No. 3 1,5 mm <sup>2</sup> AWG 16 identification No. 4 2,5 mm <sup>2</sup> AWG 14 identification No. 5			<b>silver plated</b> CDFA 0.3 CDFA 0.5 CDFA 0.7 CDFA 1.0 CDFA 1.5 CDFA 2.5	<b>gold plated 1)</b> CDFD 0.3 CDFD 0.5 CDFD 0.7 CDFD 1.0 CDFD 1.5 CDFD 2.5
10A male contacts 0,14-0,37 mm <sup>2</sup> AWG 26-22 identification No. 1 0,5 mm <sup>2</sup> AWG 20 identification No. 2 0,75 mm <sup>2</sup> AWG 18 identification No. ② 1 mm <sup>2</sup> AWG 18 identification No. 3 1,5 mm <sup>2</sup> AWG 16 identification No. 4 2,5 mm <sup>2</sup> AWG 14 identification No. 5			<b>silver plated</b> CDMA 0.3 CDMA 0.5 CDMA 0.7 CDMA 1.0 CDMA 1.5 CDMA 2.5	<b>gold plated 1)</b> CDMD 0.3 CDMD 0.5 CDMD 0.7 CDMD 1.0 CDMD 1.5 CDMD 2.5

<sup>1)</sup> the female inserts can be mounted into the straight bulkhead housings CK I from the rear

- characteristics according to EN 61984:  
**10A 250V 4kV 3**  
**10A 230/400V 4kV 2**
- UL, CSA, CCC \*, GL, EAC certified
- \* CQC certification being applied for
- rated voltage according to UL/CSA: 600V
- insulation resistance: ≥ 10 GΩ
- ambient temperature limit: -40 °C ... +125 °C
- are made of self-extinguishing thermoplastic resin UL 94 V0
- mechanical life: ≥ 500 cycles
- contact resistance: ≤ 3 mΩ
- for applications requiring higher voltages, please see the special voltage application section on page 52
- for contact crimping instructions, please see the crimping tool section (10A contacts, CDF and CDM series) on pages 534, 538, 544, 546, 548
- for maximum current load, see the following load curves inserts, for more information see page 557

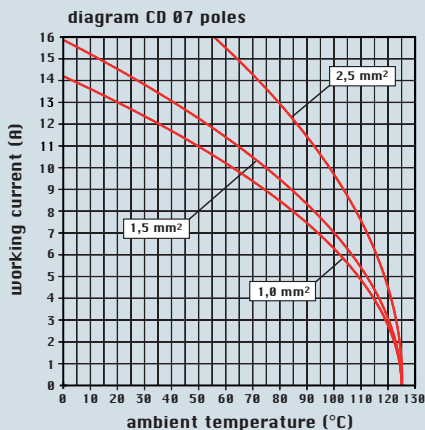
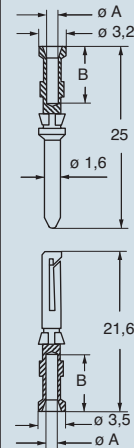
dimensions in mm



contacts side (front view)



dimensions in mm



coding pin **CR CP** with loss of one contact, page 491



CDF and CDM contacts

conductor section	conductor slot	conductors stripping length
mm <sup>2</sup>	ø A (mm)	B (mm)
0,14-0,37	0,9	8
0,5	1,1	8
0,75	1,3	8
1,0	1,45	8
1,5	1,8	8
2,5	2,2	6

<sup>1)</sup> basic or high thickness gold plating page 480

dimensions shown are not binding and may be changed without notice

enclosures:  
size "21.21" page:

insulating type ..... 221 - 222  
metallic type ..... 223 - 225  
W-TYPE for aggressive environments ..... 369  
EMC ..... 387  
IP68 ..... 416 - 418

inserts, crimp connections



10A crimp contacts  
silver and gold plated



1) the female inserts can be mounted into the straight bulkhead housings CK I from the rear

description	part No.	part No.	part No.
without contacts (to be ordered separately) female inserts for female contacts <sup>1)</sup> male inserts for male contacts	<b>CDF 08</b> <b>CDM 08</b>		

10A female contacts

0,14-0,37 mm <sup>2</sup>	AWG 26-22	identification No. 1
0,5 mm <sup>2</sup>	AWG 20	identification No. 2
0,75 mm <sup>2</sup>	AWG 18	identification No. ②
1 mm <sup>2</sup>	AWG 18	identification No. 3
1,5 mm <sup>2</sup>	AWG 16	identification No. 4
2,5 mm <sup>2</sup>	AWG 14	identification No. 5

10A male contacts

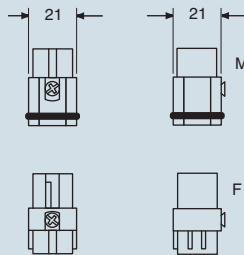
0,14-0,37 mm <sup>2</sup>	AWG 26-22	identification No. 1
0,5 mm <sup>2</sup>	AWG 20	identification No. 2
0,75 mm <sup>2</sup>	AWG 18	identification No. ②
1 mm <sup>2</sup>	AWG 18	identification No. 3
1,5 mm <sup>2</sup>	AWG 16	identification No. 4
2,5 mm <sup>2</sup>	AWG 14	identification No. 5

<b>CDF</b>	<b>silver plated</b>	<b>CD</b>	<b>gold plated 1)</b>
CDFA 0.3		CDFD 0.3	
CDFA 0.5		CDFD 0.5	
CDFA 0.7		CDFD 0.7	
CDFA 1.0		CDFD 1.0	
CDFA 1.5		CDFD 1.5	
CDFA 2.5		CDFD 2.5	

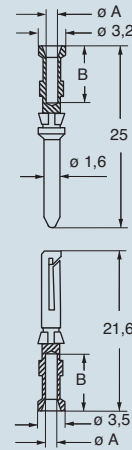
<b>CDM</b>	<b>silver plated</b>	<b>CD</b>	<b>gold plated 1)</b>
CDMA 0.3		CDMD 0.3	
CDMA 0.5		CDMD 0.5	
CDMA 0.7		CDMD 0.7	
CDMA 1.0		CDMD 1.0	
CDMA 1.5		CDMD 1.5	
CDMA 2.5		CDMD 2.5	

- characteristics according to EN 61984:  
**10A 50V ac / 120V dc 0,8kV 3**
- UL, CSA, CCC \*, GL, EAC certified
- \* CQC certification being applied for
- rated voltage according to UL/CSA: 50V
- insulation resistance: ≥ 10 GΩ
- ambient temperature limit: -40 °C ... +125 °C
- are made of self-extinguishing thermoplastic resin UL 94 V0
- mechanical life: ≥ 500 cycles
- contact resistance: ≤ 3 mΩ
- for contact crimping instructions, please see the crimping tool section (10A contacts, CDF and CDM series) on pages 534, 538, 544, 546, 548
- for maximum current load, see the following load curves inserts, for more information see page 557

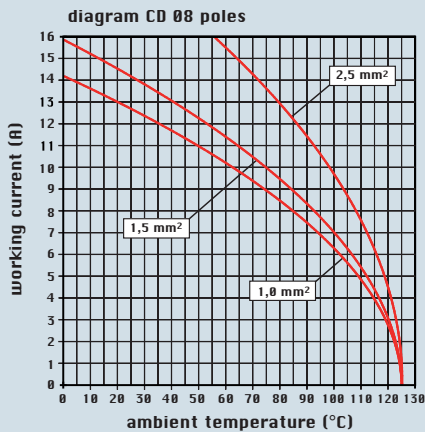
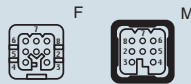
dimensions in mm



dimensions in mm



contacts side (front view)



coding pin **CR CP** with loss of one contact, page 491

**CDF and CDM contacts**

conductor section mm <sup>2</sup>	conductor slot ø A (mm)	conductors stripping length B (mm)
0,14-0,37	0,9	8
0,5	1,1	8
0,75	1,3	8
1,0	1,45	8
1,5	1,8	8
2,5	2,2	6

1) basic or high thickness gold plating page 480

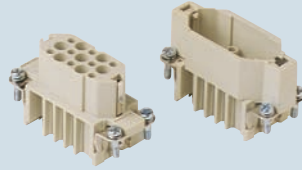
dimensions shown are not binding and may be changed without notice

enclosures:  
size "49.16" page:

IL-BRID ..... 230 - 232  
W-TYPE for aggressive environments ..... 370  
EMC ..... 390

panel supports: page:  
COB + adaptor ..... 462 - 464

inserts, crimp connections



10A crimp contacts  
silver and gold plated



description

part No.

part No. part No.

without contacts (to be ordered separately)  
female inserts for female contacts  
male inserts for male contacts

CDF 15  
CDM 15

10A female contacts

0,14-0,37 mm <sup>2</sup>	AWG 26-22	identification No. 1
0,5 mm <sup>2</sup>	AWG 20	identification No. 2
0,75 mm <sup>2</sup>	AWG 18	identification No. ②
1 mm <sup>2</sup>	AWG 18	identification No. 3
1,5 mm <sup>2</sup>	AWG 16	identification No. 4
2,5 mm <sup>2</sup>	AWG 14	identification No. 5

CDF 0.3	silver plated	CDFD 0.3	gold plated 1)
CDF 0.5		CDFD 0.5	
CDF 0.7		CDFD 0.7	
CDF 1.0		CDFD 1.0	
CDF 1.5		CDFD 1.5	
CDF 2.5		CDFD 2.5	

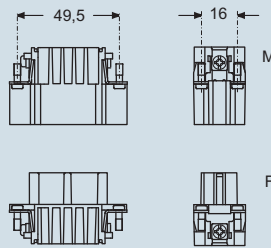
10A male contacts

0,14-0,37 mm <sup>2</sup>	AWG 26-22	identification No. 1
0,5 mm <sup>2</sup>	AWG 20	identification No. 2
0,75 mm <sup>2</sup>	AWG 18	identification No. ②
1 mm <sup>2</sup>	AWG 18	identification No. 3
1,5 mm <sup>2</sup>	AWG 16	identification No. 4
2,5 mm <sup>2</sup>	AWG 14	identification No. 5

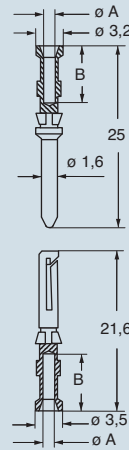
CDM 0.3	gold plated 1)	CDMD 0.3
CDM 0.5		CDMD 0.5
CDM 0.7		CDMD 0.7
CDM 1.0		CDMD 1.0
CDM 1.5		CDMD 1.5
CDM 2.5		CDMD 2.5

- characteristics according to EN 61984:  
**10A 250V 4kV 3**  
**10A 230/400V 4kV 2**
- compliant with DIN EC 175-301-801 standard
- UL, CSA, CCC \*, GL, EAC certified
- \* CQC certification being applied for
- rated voltage according to UL/CSA: 600V
- insulation resistance: ≥ 10 GΩ
- ambient temperature limit: -40 °C ... +125 °C
- are made of self-extinguishing thermoplastic resin UL 94 V0
- mechanical life: ≥ 500 cycles
- contact resistance: ≤ 3 mΩ
- for applications requiring higher voltages, please see the special voltage application section on page 52
- for contact crimping instructions, please see the crimping tool section (10A contacts, CDF and CDM series) on pages 534, 538, 544, 546, 548
- for maximum current load, see the following load curves inserts, for more information see page 557

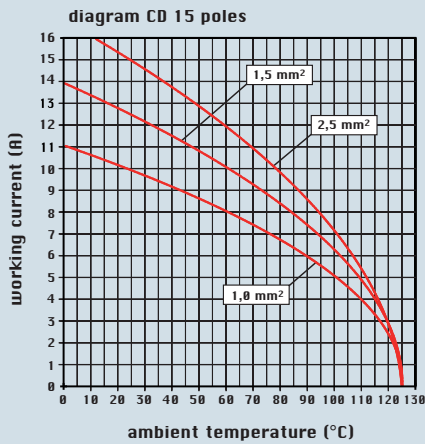
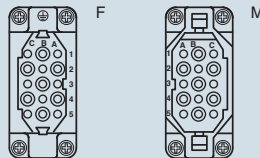
dimensions in mm



dimensions in mm



contacts side (front view)



coding pin CR CP with loss of one contact, page 491

CDF and CDM contacts

conductor section mm <sup>2</sup>	conductor slot ø A (mm)	conductors stripping length B (mm)
0,14-0,37	0,9	8
0,5	1,1	8
0,75	1,3	8
1,0	1,45	8
1,5	1,8	8
2,5	2,2	6

1) basic or high thickness gold plating page 480

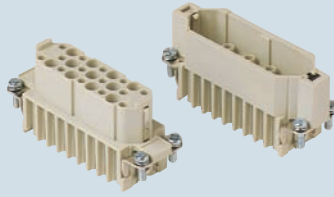
dimensions shown are not binding  
and may be changed without notice

enclosures:  
size "66.16" page:

IL-BRID ..... 233 - 235  
W-TYPE for aggressive environments ..... 371  
EMC ..... 391

panel supports: page:  
COB + adaptor ..... 462 - 464

inserts, crimp connections



10A crimp contacts  
silver and gold plated



description

part No.

part No.

part No.

without contacts (to be ordered separately)  
female inserts for female contacts  
male inserts for male contacts

**CDF 25**  
**CDM 25**

10A female contacts

0,14-0,37 mm <sup>2</sup>	AWG 26-22	identification No. 1
0,5 mm <sup>2</sup>	AWG 20	identification No. 2
0,75 mm <sup>2</sup>	AWG 18	identification No. ②
1 mm <sup>2</sup>	AWG 18	identification No. 3
1,5 mm <sup>2</sup>	AWG 16	identification No. 4
2,5 mm <sup>2</sup>	AWG 14	identification No. 5

10A male contacts

0,14-0,37 mm <sup>2</sup>	AWG 26-22	identification No. 1
0,5 mm <sup>2</sup>	AWG 20	identification No. 2
0,75 mm <sup>2</sup>	AWG 18	identification No. ②
1 mm <sup>2</sup>	AWG 18	identification No. 3
1,5 mm <sup>2</sup>	AWG 16	identification No. 4
2,5 mm <sup>2</sup>	AWG 14	identification No. 5

**CDFA 0.3**  
**CDFA 0.5**  
**CDFA 0.7**  
**CDFA 1.0**  
**CDFA 1.5**  
**CDFA 2.5**

silver plated

**CDFD 0.3**  
**CDFD 0.5**  
**CDFD 0.7**  
**CDFD 1.0**  
**CDFD 1.5**  
**CDFD 2.5**

gold plated 1)

**CDMA 0.3**  
**CDMA 0.5**  
**CDMA 0.7**  
**CDMA 1.0**  
**CDMA 1.5**  
**CDMA 2.5**

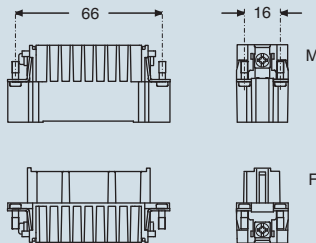
**CDMD 0.3**  
**CDMD 0.5**  
**CDMD 0.7**  
**CDMD 1.0**  
**CDMD 1.5**  
**CDMD 2.5**

- characteristics according to EN 61984:

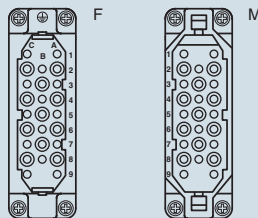
**10A 250V 4kV 3**  
**10A 230/400V 4kV 2**

- compliant with DIN EC 175-301-801 standard
- UL, CSA, CCC \*, GL, EAC certified
- \* CQC certification being applied for
- rated voltage according to UL/CSA: 600V
- insulation resistance: ≥ 10 GΩ
- ambient temperature limit: -40 °C ... +125 °C
- are made of self-extinguishing thermoplastic resin UL 94 V0
- mechanical life: ≥ 500 cycles
- contact resistance: ≤ 3 mΩ
- for applications requiring higher voltages, please see the special voltage application section on page 52
- for contact crimping instructions, please see the crimping tool section (10A contacts, CDF and CDM series) on pages 534, 538, 544, 546, 548
- for maximum current load, see the following load curves inserts, for more information see page 557

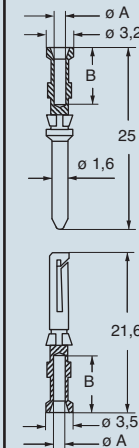
dimensions in mm



contacts side (front view)



dimensions in mm

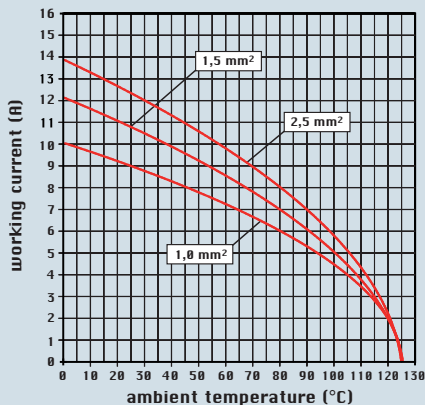


**CDF and CDM contacts**

conductor section mm <sup>2</sup>	conductor slot ø A (mm)	conductors stripping length B (mm)
0,14-0,37	0,9	8
0,5	1,1	8
0,75	1,3	8
1,0	1,45	8
1,5	1,8	8
2,5	2,2	6

1) basic or high thickness gold plating page 480

diagram CD 25 poles



coding pin **CR CP** with loss of one contact, page 491



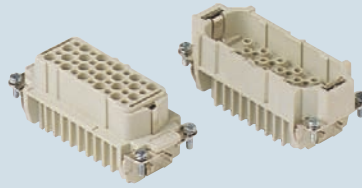
dimensions shown are not binding  
and may be changed without notice

enclosures:  
size "77.27" page:

C-TYPE IP65/IP66 ..... 250 - 256  
 C7 IP67, two levers ..... 276  
 V-TYPE IP65/IP66, single lever 282/292 - 295  
 BIG hoods ..... 312 - 315  
 T-TYPE IP65 insulating ..... 330 - 331  
 T-TYPE / W IP66 insulating ..... 340 - 341  
 HYGIENIC T-TYPE / H IP66/IP69 ..... 354 - 355  
 HYGIENIC T-TYPE / C IP66/IP69, -50 °C 362 - 363  
 W-TYPE for aggressive environments ..... 375  
 EMC ..... 394  
 central lever ..... 408 - 409  
 IP68 ..... 428 - 431  
 LS-TYPE ..... 454 - 455

panel supports: page:  
 COB ..... 462 - 463

inserts, crimp connections



10A crimp contacts silver and gold plated



description	part No.	part No.	part No.
-------------	----------	----------	----------

without contacts (to be ordered separately)  
 female inserts for female contacts  
 male inserts for male contacts

CDF 40  
 CDM 40

10A female contacts

0,14-0,37 mm <sup>2</sup>	AWG 26-22	identification No. 1
0,5 mm <sup>2</sup>	AWG 20	identification No. 2
0,75 mm <sup>2</sup>	AWG 18	identification No. ②
1 mm <sup>2</sup>	AWG 18	identification No. 3
1,5 mm <sup>2</sup>	AWG 16	identification No. 4
2,5 mm <sup>2</sup>	AWG 14	identification No. 5

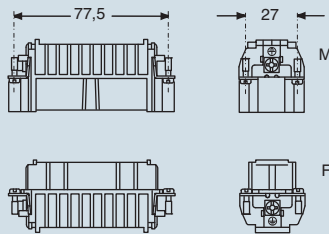
10A male contacts

0,14-0,37 mm <sup>2</sup>	AWG 26-22	identification No. 1
0,5 mm <sup>2</sup>	AWG 20	identification No. 2
0,75 mm <sup>2</sup>	AWG 18	identification No. ②
1 mm <sup>2</sup>	AWG 18	identification No. 3
1,5 mm <sup>2</sup>	AWG 16	identification No. 4
2,5 mm <sup>2</sup>	AWG 14	identification No. 5

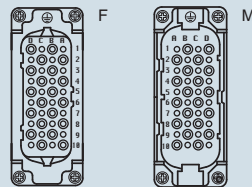
C DFA 0.3	silver plated	C DFD 0.3	gold plated 1)
C DFA 0.5		C DFD 0.5	
C DFA 0.7		C DFD 0.7	
C DFA 1.0		C DFD 1.0	
C DFA 1.5		C DFD 1.5	
C DFA 2.5		C DFD 2.5	
C DMA 0.3	gold plated 1)	C DMD 0.3	gold plated 1)
C DMA 0.5		C DMD 0.5	
C DMA 0.7		C DMD 0.7	
C DMA 1.0		C DMD 1.0	
C DMA 1.5		C DMD 1.5	
C DMA 2.5		C DMD 2.5	

- characteristics according to EN 61984:  
**10A 250V 4kV 3**  
**10A 230/400V 4kV 2**
- compliant with DIN EC 175-301-801 standard
- UL, CSA, CCC \*, GL, EAC certified
- \* CQC certification being applied for
- rated voltage according to UL/CSA: 600V
- insulation resistance: ≥ 10 GΩ
- ambient temperature limit: -40 °C ... +125 °C
- are made of self-extinguishing thermoplastic resin UL 94 V0
- mechanical life: ≥ 500 cycles
- contact resistance: ≤ 3 mΩ
- for applications requiring higher voltages, please see the special voltage application section on page 52
- for contact crimping instructions, please see the crimping tool section (10A contacts, CDF and CDM series) on pages 534, 538, 544, 546, 548
- for maximum current load, see the following load curves inserts, for more information see page 557

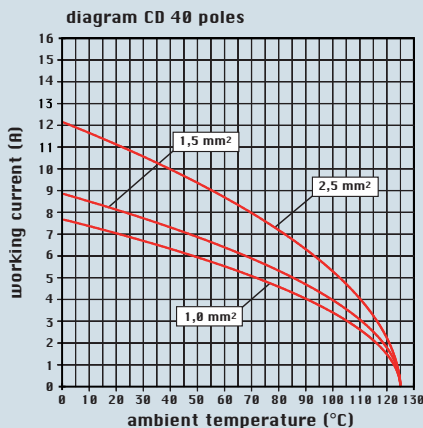
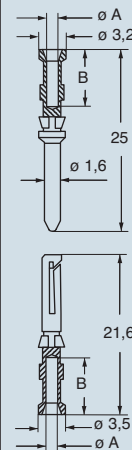
dimensions in mm



contacts side (front view)



dimensions in mm



coding pin CR CP with loss of one contact, page 491



CDF and CDM contacts

conductor section mm <sup>2</sup>	conductor slot ø A (mm)	conductors stripping length B (mm)
0,14-0,37	0,9	8
0,5	1,1	8
0,75	1,3	8
1,0	1,45	8
1,5	1,8	8
2,5	2,2	6

1) basic or high thickness gold plating page 480

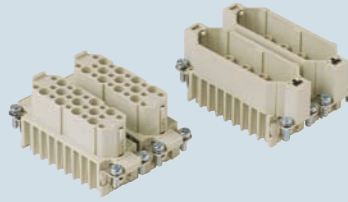
dimensions shown are not binding and may be changed without notice

enclosures:  
size "66.40"

page:

C-TYPE IP65/IP66 ..... 237 - 239  
W-TYPE for aggressive environments ..... 372

inserts, crimp connections



10A crimp contacts  
silver and gold plated



description

part No.

part No.

part No.

part No.

without contacts (to be ordered separately)  
female inserts, No. (A1÷C9) and (ZA1÷ZC9) \*  
male inserts, No. (A1÷C9) and (ZA1÷ZC9) \*

**CDF 25**  
**CDM 25**

**CDF 25 Z \***  
**CDM 25 Z \***

10A female contacts

0,14-0,37 mm <sup>2</sup>	AWG 26-22	identification No. 1
0,5 mm <sup>2</sup>	AWG 20	identification No. 2
0,75 mm <sup>2</sup>	AWG 18	identification No. ②
1 mm <sup>2</sup>	AWG 18	identification No. 3
1,5 mm <sup>2</sup>	AWG 16	identification No. 4
2,5 mm <sup>2</sup>	AWG 14	identification No. 5

10A male contacts

0,14-0,37 mm <sup>2</sup>	AWG 26-22	identification No. 1
0,5 mm <sup>2</sup>	AWG 20	identification No. 2
0,75 mm <sup>2</sup>	AWG 18	identification No. ②
1 mm <sup>2</sup>	AWG 18	identification No. 3
1,5 mm <sup>2</sup>	AWG 16	identification No. 4
2,5 mm <sup>2</sup>	AWG 14	identification No. 5

**C DFA 0.3**  
**C DFA 0.5**  
**C DFA 0.7**  
**C DFA 1.0**  
**C DFA 1.5**  
**C DFA 2.5**

silver plated

**C DFD 0.3**  
**C DFD 0.5**  
**C DFD 0.7**  
**C DFD 1.0**  
**C DFD 1.5**  
**C DFD 2.5**

gold plated 1)

**C DMA 0.3**  
**C DMA 0.5**  
**C DMA 0.7**  
**C DMA 1.0**  
**C DMA 1.5**  
**C DMA 2.5**

**C DMD 0.3**  
**C DMD 0.5**  
**C DMD 0.7**  
**C DMD 1.0**  
**C DMD 1.5**  
**C DMD 2.5**

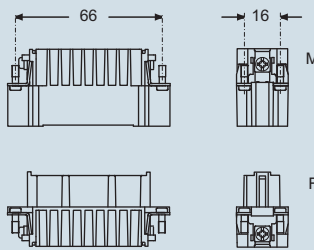
\* coding compliant with EUROMAP recommendations

- characteristics according to EN 61984:

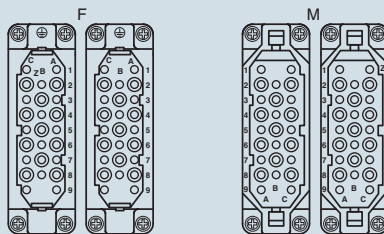
**10A 250V 4kV 3**  
**10A 230/400V 4kV 2**

- compliant with DIN EC 175-301-801 standard
- UL, CSA, CCC \*, GL, EAC certified
- \* CQC certification being applied for
- rated voltage according to UL/CSA: 600V
- insulation resistance: ≥ 10 GΩ
- ambient temperature limit: -40 °C ... +125 °C
- are made of self-extinguishing thermoplastic resin UL 94 V0
- mechanical life: ≥ 500 cycles
- contact resistance: ≤ 3 mΩ
- for applications requiring higher voltages, please see the special voltage application section on page 52
- for contact crimping instructions, please see the crimping tool section (10A contacts, CDF and CDM series) on pages 534, 538, 544, 546, 548
- for maximum current load, see the following load curves inserts, for more information see page 557

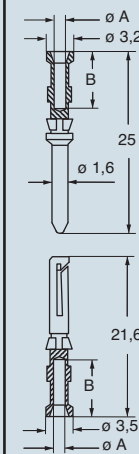
dimensions in mm



contacts side (front view)



dimensions in mm

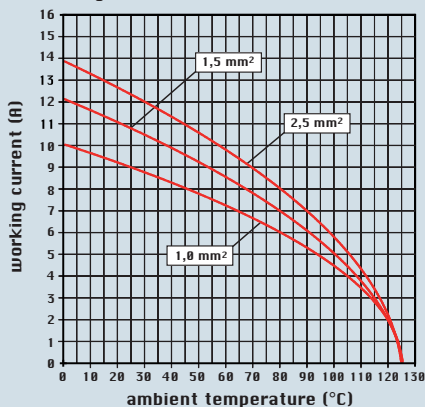


**CDF and CDM contacts**

conductor section mm <sup>2</sup>	conductor slot ø A (mm)	conductors stripping length B (mm)
0,14-0,37	0,9	8
0,5	1,1	8
0,75	1,3	8
1,0	1,45	8
1,5	1,8	8
2,5	2,2	6

1) basic or high thickness gold plating page 480

diagram CD 50 poles



coding pin **CR CP** with loss of one contact, page 491



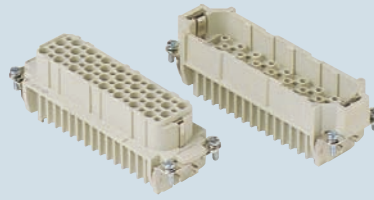
dimensions shown are not binding  
and may be changed without notice

enclosures:  
 size "104.27" page:

C-TYPE IP65/IP66 ..... 258 - 266  
 C7 IP67, two levers ..... 277  
 V-TYPE IP65/IP66, single lever 283/296 - 299  
 BIG hoods ..... 316 - 319  
 T-TYPE IP65 insulating ..... 332 - 333  
 T-TYPE / W IP66 insulating ..... 342 - 343  
 HYGIENIC T-TYPE / H IP66/IP69 ..... 356 - 357  
 HYGIENIC T-TYPE / C IP66/IP69, -50 °C 364 - 365  
 W-TYPE for aggressive environments ..... 376  
 EMC ..... 395  
 central lever ..... 410 - 412  
 IP68 ..... 432 - 435  
 LS-TYPE ..... 456 - 457

panel supports: page:  
 COB ..... 462 - 463

inserts, crimp connections



10A crimp contacts  
 silver and gold plated



description	part No.
-------------	----------

without contacts (to be ordered separately)  
 female inserts for female contacts  
 male inserts for male contacts

10A female contacts		
0,14-0,37 mm <sup>2</sup>	AWG 26-22	identification No. 1
0,5 mm <sup>2</sup>	AWG 20	identification No. 2
0,75 mm <sup>2</sup>	AWG 18	identification No. ②
1 mm <sup>2</sup>	AWG 18	identification No. 3
1,5 mm <sup>2</sup>	AWG 16	identification No. 4
2,5 mm <sup>2</sup>	AWG 14	identification No. 5

10A male contacts		
0,14-0,37 mm <sup>2</sup>	AWG 26-22	identification No. 1
0,5 mm <sup>2</sup>	AWG 20	identification No. 2
0,75 mm <sup>2</sup>	AWG 18	identification No. ②
1 mm <sup>2</sup>	AWG 18	identification No. 3
1,5 mm <sup>2</sup>	AWG 16	identification No. 4
2,5 mm <sup>2</sup>	AWG 14	identification No. 5

- characteristics according to EN 61984:  
**10A 250V 4kV 3**  
**10A 230/400V 4kV 2**
- compliant with DIN EC 175-301-801 standard
- UL, CSA, CCC \*, GL, EAC certified
- \* CQC certification being applied for
- rated voltage according to UL/CSA: 600V
- insulation resistance: ≥ 10 GΩ
- ambient temperature limit: -40 °C ... +125 °C
- are made of self-extinguishing thermoplastic resin UL 94 V0
- mechanical life: ≥ 500 cycles
- contact resistance: ≤ 3 mΩ
- for applications requiring higher voltages, please see the special voltage application section on page 52
- for contact crimping instructions, please see the crimping tool section (10A contacts, CDF and CDM series) on pages 534, 538, 544, 546, 548
- for maximum current load, see the following load curves inserts, for more information see page 557

description	part No.
-------------	----------

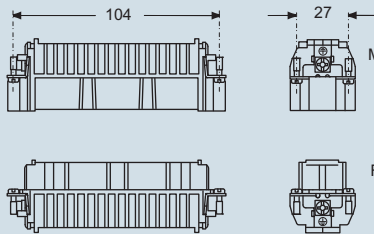
CDF 64  
 CDM 64

description	part No.	part No.
-------------	----------	----------

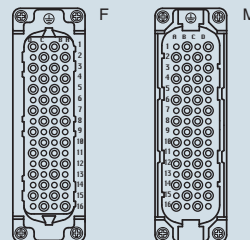
CDFA 0.3	silver plated	CDFD 0.3	gold plated 1)
CDFA 0.5		CDFD 0.5	
CDFA 0.7		CDFD 0.7	
CDFA 1.0		CDFD 1.0	
CDFA 1.5		CDFD 1.5	
CDFA 2.5		CDFD 2.5	

CDMA 0.3	silver plated	CDMD 0.3	gold plated 1)
CDMA 0.5		CDMD 0.5	
CDMA 0.7		CDMD 0.7	
CDMA 1.0		CDMD 1.0	
CDMA 1.5		CDMD 1.5	
CDMA 2.5		CDMD 2.5	

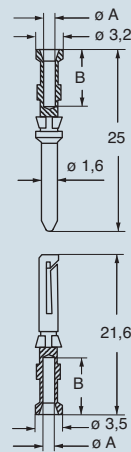
dimensions in mm



contacts side (front view)

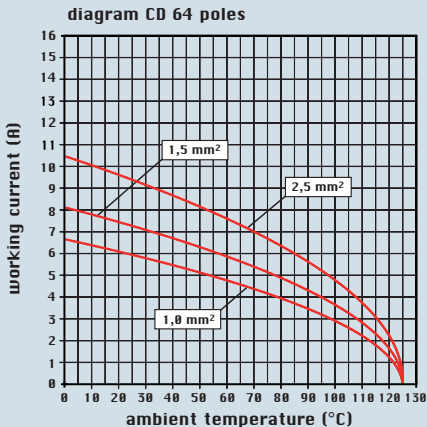


dimensions in mm



CDF and CDM contacts		
conductor section	conductor slot ø A (mm)	conductors stripping length B (mm)
0,14-0,37	0,9	8
0,5	1,1	8
0,75	1,3	8
1,0	1,45	8
1,5	1,8	8
2,5	2,2	6

1) basic or high thickness gold plating page 480



coding pin CR CP with loss of one contact, page 491



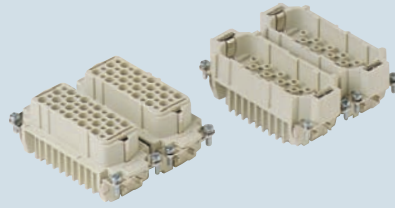
dimensions shown are not binding  
 and may be changed without notice



enclosures:  
size "77.62" page:

C-TYPE IP65/IP66 ..... 267 - 270  
W-TYPE for aggressive environments ..... 377

inserts, crimp connections



10A crimp contacts  
silver and gold plated



description	part No.	part No.	part No.	part No.
-------------	----------	----------	----------	----------

without contacts (to be ordered separately)  
female inserts  
male inserts

CDF 40  
CDM 40

CDFA 0.3  
CDFA 0.5  
CDFA 0.7  
CDFA 1.0  
CDFA 1.5  
CDFA 2.5

**silver plated**

CDFD 0.3  
CDFD 0.5  
CDFD 0.7  
CDFD 1.0  
CDFD 1.5  
CDFD 2.5

**gold plated 1)**

10A female contacts

0,14-0,37 mm <sup>2</sup>	AWG 26-22	identification No. 1
0,5 mm <sup>2</sup>	AWG 20	identification No. 2
0,75 mm <sup>2</sup>	AWG 18	identification No. ②
1 mm <sup>2</sup>	AWG 18	identification No. 3
1,5 mm <sup>2</sup>	AWG 16	identification No. 4
2,5 mm <sup>2</sup>	AWG 14	identification No. 5

10A male contacts

0,14-0,37 mm <sup>2</sup>	AWG 26-22	identification No. 1
0,5 mm <sup>2</sup>	AWG 20	identification No. 2
0,75 mm <sup>2</sup>	AWG 18	identification No. ②
1 mm <sup>2</sup>	AWG 18	identification No. 3
1,5 mm <sup>2</sup>	AWG 16	identification No. 4
2,5 mm <sup>2</sup>	AWG 14	identification No. 5

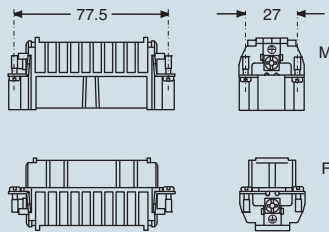
CDMA 0.3  
CDMA 0.5  
CDMA 0.7  
CDMA 1.0  
CDMA 1.5  
CDMA 2.5

**gold plated 1)**

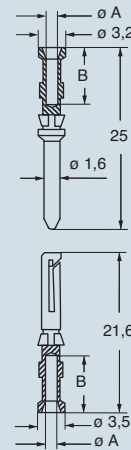
CDMD 0.3  
CDMD 0.5  
CDMD 0.7  
CDMD 1.0  
CDMD 1.5  
CDMD 2.5

- characteristics according to EN 61984:  
**10A 250V 4kV 3**  
**10A 230/400V 4kV 2**
- compliant with DIN EC 175-301-801 standard
- UL, CSA, CCC \*, GL, EAC certified
- \* CQC certification being applied for
- rated voltage according to UL/CSA: 600V
- insulation resistance: ≥ 10 GΩ
- ambient temperature limit: -40 °C ... +125 °C
- are made of self-extinguishing thermoplastic resin UL 94 V0
- mechanical life: ≥ 500 cycles
- contact resistance: ≤ 3 mΩ
- for applications requiring higher voltages, please see the special voltage application section on page 52
- for contact crimping instructions, please see the crimping tool section (10A contacts, CDF and CDM series) on pages 534, 538, 544, 546, 548
- for maximum current load, see the following load curves inserts, for more information see page 557

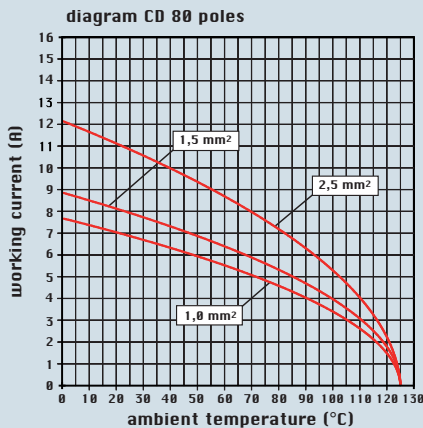
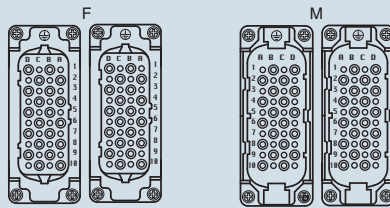
dimensions in mm



dimensions in mm



contacts side (front view)



coding pin CR CP with loss of one contact, page 491



CDF and CDM contacts

conductor section	conductor slot	conductors stripping length
mm <sup>2</sup>	ø A (mm)	B (mm)
0,14-0,37	0,9	8
0,5	1,1	8
0,75	1,3	8
1,0	1,45	8
1,5	1,8	8
2,5	2,2	6

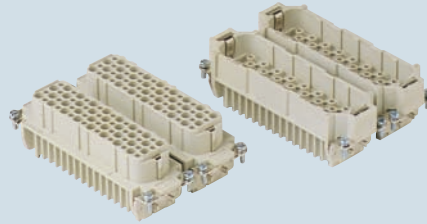
1) basic or high thickness gold plating page 480

dimensions shown are not binding  
and may be changed without notice

enclosures:  
size "104.62" page:

C-TYPE IP65/IP66..... 271  
W-TYPE for aggressive environments .. 378

inserts, crimp connections



10A crimp contacts  
silver and gold plated



description	part No.	part No.	part No.	part No.
-------------	----------	----------	----------	----------

without contacts (to be ordered separately)  
female inserts  
male inserts

CDF 64  
CDM 64

CDF 64	CDF 64
CDM 64	CDM 64

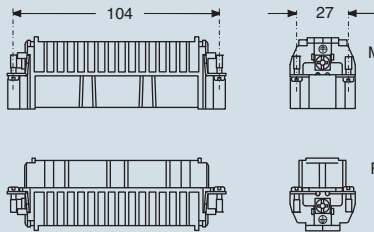
10A female contacts		
0,14-0,37 mm <sup>2</sup>	AWG 26-22	identification No. 1
0,5 mm <sup>2</sup>	AWG 20	identification No. 2
0,75 mm <sup>2</sup>	AWG 18	identification No. ②
1 mm <sup>2</sup>	AWG 18	identification No. 3
1,5 mm <sup>2</sup>	AWG 16	identification No. 4
2,5 mm <sup>2</sup>	AWG 14	identification No. 5

CDMA 0.3	CDMD 0.3
CDMA 0.5	CDMD 0.5
CDMA 0.7	CDMD 0.7
CDMA 1.0	CDMD 1.0
CDMA 1.5	CDMD 1.5
CDMA 2.5	CDMD 2.5

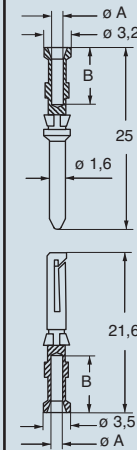
10A male contacts		
0,14-0,37 mm <sup>2</sup>	AWG 26-22	identification No. 1
0,5 mm <sup>2</sup>	AWG 20	identification No. 2
0,75 mm <sup>2</sup>	AWG 18	identification No. ②
1 mm <sup>2</sup>	AWG 18	identification No. 3
1,5 mm <sup>2</sup>	AWG 16	identification No. 4
2,5 mm <sup>2</sup>	AWG 14	identification No. 5

- characteristics according to EN 61984:
- 10A 250V 4kV 3**
- 10A 230/400V 4kV 2**
- compliant with DIN EC 175-301-801 standard
- UL, CSA, CCC \*, GL, EAC certified
- \* CQC certification being applied for
- rated voltage according to UL/CSA: 600V
- insulation resistance: ≥ 10 GΩ
- ambient temperature limit: -40 °C ... +125 °C
- are made of self-extinguishing thermoplastic resin UL 94 V0
- mechanical life: ≥ 500 cycles
- contact resistance: ≤ 3 mΩ
- for applications requiring higher voltages, please see the special voltage application section on page 52
- for contact crimping instructions, please see the crimping tool section (10A contacts, CDF and CDM series) on pages 534, 538, 544, 546, 548
- for maximum current load, see the following load curves inserts, for more information see page 557

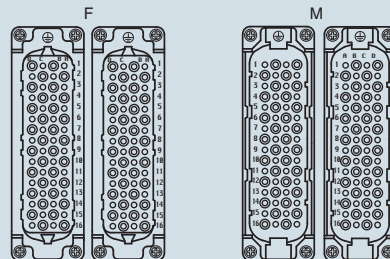
dimensions in mm



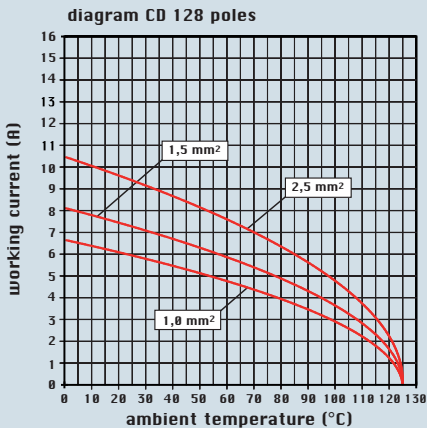
dimensions in mm



contacts side (front view)



CDF and CDM contacts		
conductor section	conductor slot ø A (mm)	conductors stripping length B (mm)
0,14-0,37	0,9	8
0,5	1,1	8
0,75	1,3	8
1,0	1,45	8
1,5	1,8	8
2,5	2,2	6



coding pin **CR CP** with loss of one contact, page 491



dimensions shown are not binding  
and may be changed without notice

1) basic or high thickness gold plating page 480