

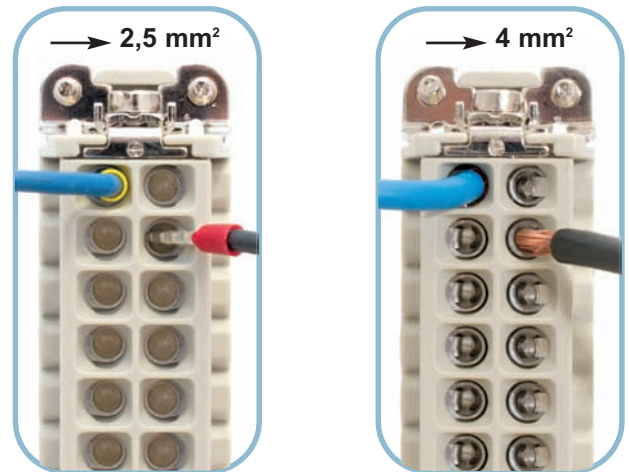
CDA - CDC series

Renewal of the compact inserts

The new CDA inserts with screw-type termination.

The renewed screw-type connector inserts (**CDA** series) with 10 and 16 poles + \oplus are now made using screw-type terminals (CNE series) with a built-in wire protection pressure plate of proven reliability and practicality.

The wire protection pressure plate preserves the conductors in case of wiring with unprepared conductors (i.e. without wire end ferrules) up to a maximum wire cross-section of 4 mm² (12 AWG). The variant without a wire protection pressure plate (code with suffix X) is also available, for use with prepared conductors featuring a wire end ferrule with a maximum usable wire cross-section of 2,5 mm² (14 AWG).



The new CDC inserts with crimp termination.

The renewed crimp termination **CDC** series of inserts with 10 and 16 poles + \oplus now adopt the tried and tested contact retention technique of connector series CCE and CQE for removable crimp contacts (series CC, max 16A).

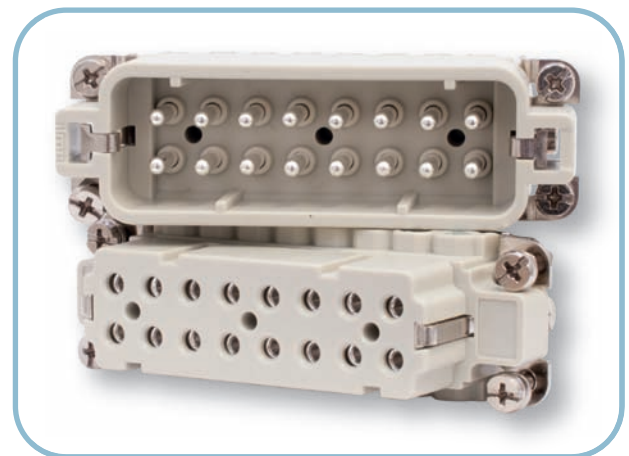
The characteristics of **CDA/CDC** inserts are:

- according to standard EN 61984:

16A 250V 4kV 3

16A 230/400V 4kV 2

- insulation resistance: $\geq 10 \text{ G}\Omega$
- ambient temperature limit: $-40 \text{ }^\circ\text{C} \dots +125 \text{ }^\circ\text{C}$
- construction material: UL 94 V-0 self-extinguishing thermoplastic resin
- mechanical life: ≥ 500 cycles.

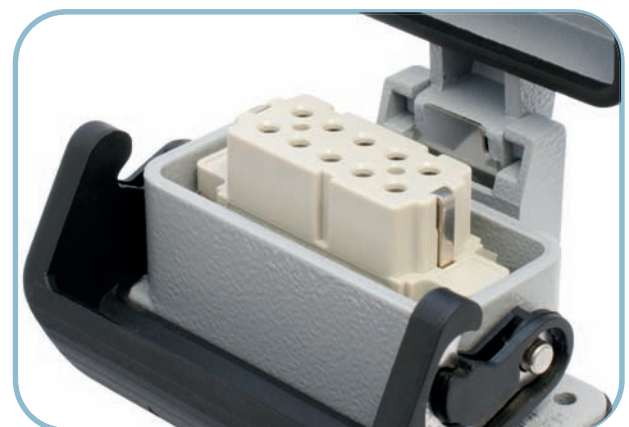


The applications.

Like those of the previous series, the new CDA and CDC inserts and their enclosures are used in accordance with the recommendations EUROMAP 12, EUROMAP 13, EUROMAP 14-1, EUROMAP 16 and EUROMAP 62 (European industry consortium for moulding machines and plastic processing).

The CDC inserts can also be used with CC series crimp contacts made of iron/constantan (Fe-CuNi) for the cabling of J type thermocouples in accordance with IEC/EN 60584-1 (Recommendation EUROMAP 14-1).

The CDA/CDC series inserts can also be coupled with previous insert versions.

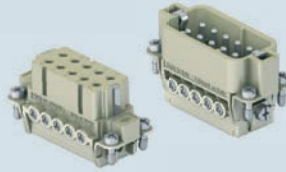


enclosures:
size "49.16" page:

- IL-BRID 230 - 232
- W-TYPE for aggressive environments 370
- EMC 390

panel supports: page:
COB + adaptor 462 - 464

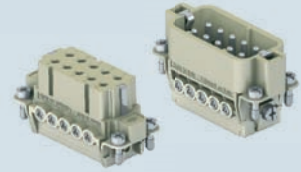
inserts,
screw terminal connection



silver plated contacts

NEW

inserts,
screw terminal connection



silver plated contacts

NEW

description

part No.

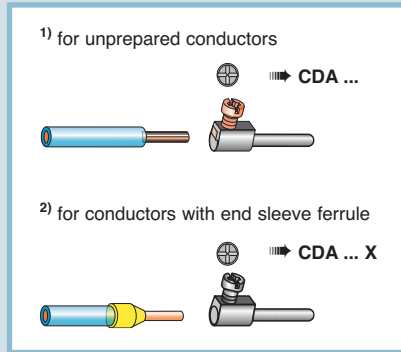
part No.

indirect, with pressure plate ¹⁾
female inserts with female contacts
male inserts with male contacts

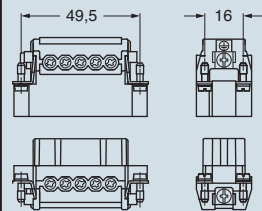
CDAF 10
CDAM 10

direct, without pressure plate ²⁾
female inserts with female contacts
male inserts with male contacts

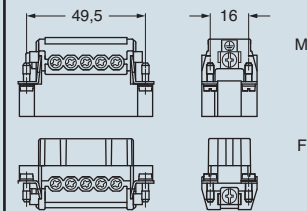
CDAF 10 X
CDAM 10 X



dimensions in mm



dimensions in mm

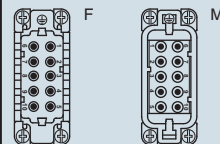


- characteristics according to EN 61984:

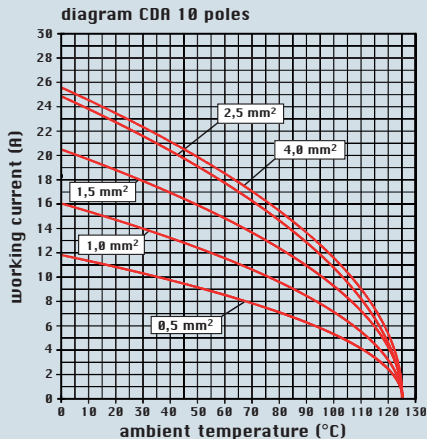
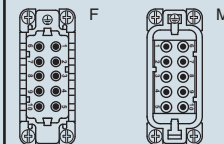
16A 250V 4kV 3
16A 230/400V 4kV 2

- cUL - UL for USA and Canada, CSA, CCC *, GL, EAC certified; * CQC certification being applied for
- rated voltage according to UL/CSA: 600V
- insulation resistance: $\geq 10 \text{ G}\Omega$
- ambient temperature limit: $-40 \text{ }^\circ\text{C} \dots +125 \text{ }^\circ\text{C}$
- are made of self-extinguishing thermoplastic resin UL 94 V0
- mechanical life: ≥ 500 cycles
- contact resistance: $\leq 1 \text{ m}\Omega$
- according to recommendations EUROMAP N° 16
- for maximum current load, see the following inserts load curves, for more information see page 559

contacts side (front view)



contacts side (front view)



- inserts with pressure plate for conductors cross-sections: 0,5 - 4 mm² - AWG 20 - 12
- conductors stripping length: 7 mm
- terminal screw torque: 0,5 Nm (4.4 lb.in), for more information see page 34 and 35

- inserts without pressure plate for prepared conductors with cross-sections: 0,25 - 2,5 mm² - AWG 24 - 14
- the stripping length for prepared wires with bush crimped depends on that of the bush itself
- terminal screw torque: 0,5 Nm (4.4 lb.in), for more information see page 34 and 35

dimensions shown are not binding
and may be changed without notice

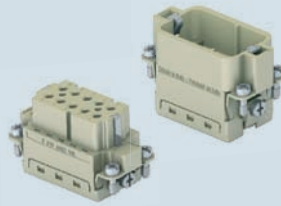
enclosures:
size "49.16" page:

IL-BRID 230 - 232
W-TYPE for aggressive environments 370
EMC 390

panel supports: page:
COB + adaptor 462 - 464

- for contact crimping instructions, please see the crimping tool section (16A contacts, CCF, CCM and CC...AN series) on pages 534, 538, 544, 546, 548

inserts, crimp connections



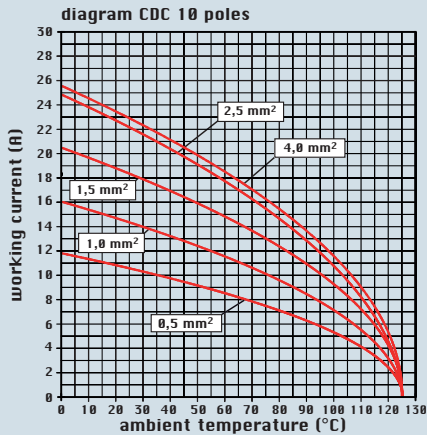
NEW

16A crimp contacts
normal and for advanced opening
silver and gold plated



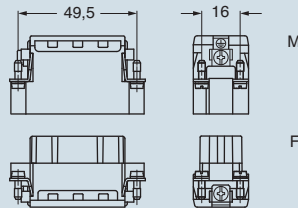
description	part No.	part No.	part No.
without contacts (to be ordered separately) female inserts for female contacts male inserts for male contacts	CDCF 10 CDCM 10		
16A female contacts 0,14-0,37 mm ² AWG 26-22 three grooves 0,5 mm ² AWG 20 with no grooves 0,75 mm ² AWG 18 one groove (back side) 1 mm ² AWG 18 one groove 1,5 mm ² AWG 16 two grooves 2,5 mm ² AWG 14 three grooves 3 mm ² AWG 12 one wide groove 4 mm ² AWG 12 with no grooves		CCFA 0.3 CCFA 0.5 CCFA 0.7 CCFA 1.0 CCFA 1.5 CCFA 2.5 CCFA 3.0 CCFA 4.0	CCFD 0.3 CCFD 0.5 CCFD 0.7 CCFD 1.0 CCFD 1.5 CCFD 2.5 CCFD 3.0 CCFD 4.0
16A male contacts 0,14-0,37 mm ² AWG 26-22 three grooves 0,5 mm ² AWG 20 with no grooves 0,75 mm ² AWG 18 one groove (back side) 1 mm ² AWG 18 one groove 1,5 mm ² AWG 16 two grooves 2,5 mm ² AWG 14 three grooves 3 mm ² AWG 12 one wide groove 4 mm ² AWG 12 with no grooves		CCMA 0.3 CCMA 0.5 CCMA 0.7 CCMA 1.0 CCMA 1.5 CCMA 2.5 CCMA 3.0 CCMA 4.0	CCMD 0.3 CCMD 0.5 CCMD 0.7 CCMD 1.0 CCMD 1.5 CCMD 2.5 CCMD 3.0 CCMD 4.0
16A male crimp contacts for advanced opening 0,5 mm ² AWG 20 with no grooves 0,75 mm ² AWG 18 one groove (back side) 1 mm ² AWG 18 one groove 1,5 mm ² AWG 16 two grooves 2,5 mm ² AWG 14 three grooves		CC 0.5 AN CC 0.7 AN CC 1.0 AN CC 1.5 AN CC 2.5 AN	

- characteristics according to EN 61984:
16A 250V 4kV 3
16A 230/400V 4kV 2
- cUL - UL for USA and Canada, CSA, CCC*, GL, EAC certified; * CQC certification being applied for
- rated voltage according to UL/CSA: 600V
- insulation resistance: ≥ 10 GΩ
- ambient temperature limit: -40 °C ... +125 °C
- are made of self-extinguishing thermoplastic resin UL 94 V0
- mechanical life: ≥ 500 cycles
- contact resistance: ≤ 1 mΩ
- according to recommendations EUROMAP N° 16
- for maximum current load, see the following inserts load curves, for more information see page 559

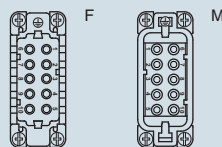


dimensions shown are not binding
and may be changed without notice

dimensions in mm

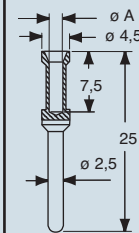


contacts side (front view)

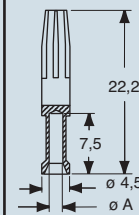
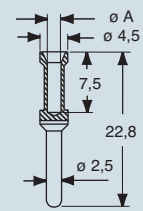


dimensions in mm

CCF and CCM



CC...AN



CCF, CCM and CC...AN contacts

conductor section	conductor slot	conductors stripping length
mm ²	ø A (mm)	(mm)
0,14-0,37	0,9	7,5
0,5	1,1	7,5
0,75	1,3	7,5
1,0	1,45	7,5
1,5	1,8	7,5
2,5	2,2	7,5
3	2,55	7,5
4	2,85	7,5

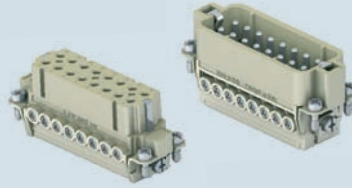
1) basic or high thickness gold plating page 481

enclosures:
size "66.16" page:

IL-BRID 233 - 235
W-TYPE for aggressive environments 371
EMC 391

panel supports: page:
COB + adaptor 462 - 464

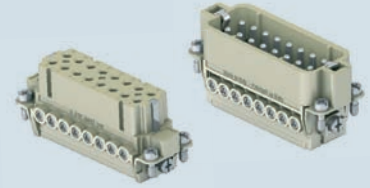
inserts,
screw terminal connection



silver plated contacts

NEW

inserts,
screw terminal connection



silver plated contacts

NEW

description

part No.

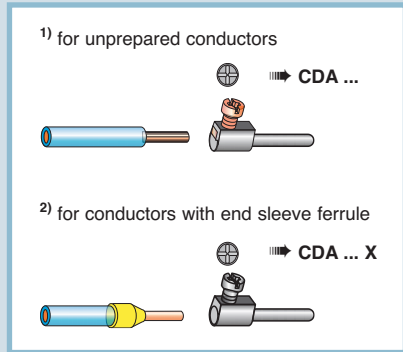
part No.

indirect, with pressure plate ¹⁾
female inserts with female contacts
male inserts with male contacts

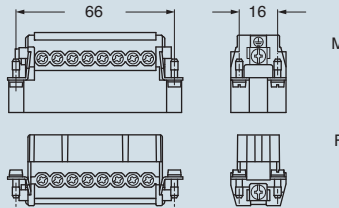
CDAF 16
CDAM 16

direct, without pressure plate ²⁾
female inserts with female contacts
male inserts with male contacts

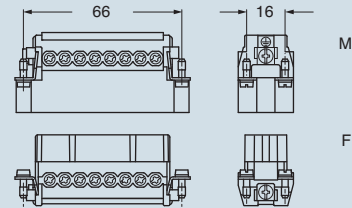
CDAF 16 X
CDAM 16 X



dimensions in mm



dimensions in mm

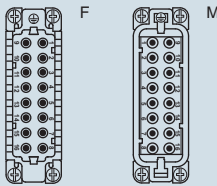


- characteristics according to EN 61984:

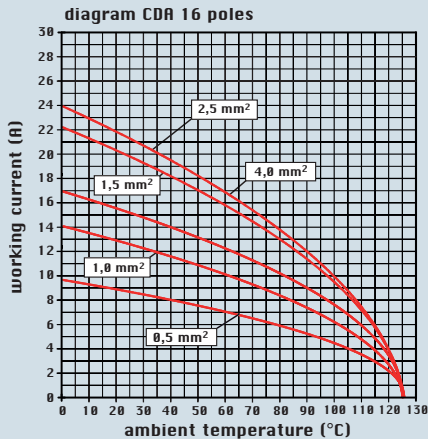
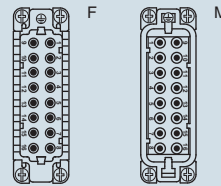
16A 250V 4kV 3
16A 230/400V 4kV 2

- cUL - UL for USA and Canada, CSA, CCC *, GL, EAC certified; * CQC certification being applied for
- rated voltage according to UL/CSA: 600V
- insulation resistance: $\geq 10 \text{ G}\Omega$
- ambient temperature limit: $-40 \text{ }^\circ\text{C} \dots +125 \text{ }^\circ\text{C}$
- are made of self-extinguishing thermoplastic resin UL 94 V0
- mechanical life: ≥ 500 cycles
- contact resistance: $\leq 1 \text{ m}\Omega$
- according to recommendations EUROMAP N° 13/N° 14.1
- for maximum current load, see the following inserts load curves, for more information see page 559

contacts side (front view)



contacts side (front view)



- inserts with pressure plate for conductors cross-sections: 0,5 - 4 mm² - AWG 20 - 12
- conductors stripping length: 7 mm
- terminal screw torque: 0,5 Nm (4.4 lb.in), for more information see page 34 and 35

- inserts without pressure plate for prepared conductors with cross-sections: 0,25 - 2,5 mm² - AWG 24 - 14
- the stripping length for prepared wires with bush crimped depends on that of the bush itself
- terminal screw torque: 0,5 Nm (4.4 lb.in), for more information see page 34 and 35

dimensions shown are not binding
and may be changed without notice

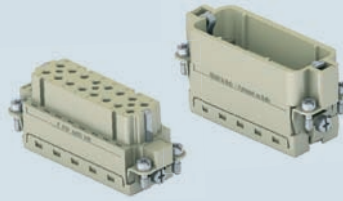
enclosures:
size "66.16" page:

IL-BRID 233 - 235
W-TYPE for aggressive environments 371
EMC 391

panel supports: page:
COB + adaptor 462 - 464

- for contact crimping instructions, please see the crimping tool section (16A contacts, CCF, CCM and CC...AN series) on pages 534, 538, 544, 546, 548

inserts, crimp connections



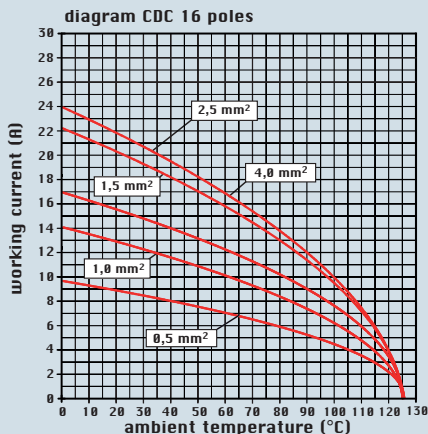
NEW

16A crimp contacts
normal and for advanced opening
silver and gold plated



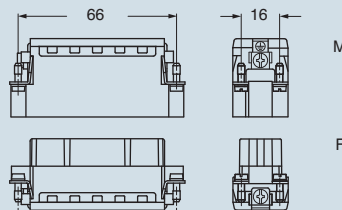
description	part No.	part No.	part No.																																																																																															
without contacts (to be ordered separately) female inserts for female contacts male inserts for male contacts	CDCF 16 CDCM 16																																																																																																	
<p>16A female contacts</p> <table border="1"> <tr><td>0,14-0,37 mm²</td><td>AWG 26-22</td><td>three grooves</td></tr> <tr><td>0,5 mm²</td><td>AWG 20</td><td>with no grooves</td></tr> <tr><td>0,75 mm²</td><td>AWG 18</td><td>one groove (back side)</td></tr> <tr><td>1 mm²</td><td>AWG 18</td><td>one groove</td></tr> <tr><td>1,5 mm²</td><td>AWG 16</td><td>two grooves</td></tr> <tr><td>2,5 mm²</td><td>AWG 14</td><td>three grooves</td></tr> <tr><td>3 mm²</td><td>AWG 12</td><td>one wide groove</td></tr> <tr><td>4 mm²</td><td>AWG 12</td><td>with no grooves</td></tr> </table> <p>16A male contacts</p> <table border="1"> <tr><td>0,14-0,37 mm²</td><td>AWG 26-22</td><td>three grooves</td></tr> <tr><td>0,5 mm²</td><td>AWG 20</td><td>with no grooves</td></tr> <tr><td>0,75 mm²</td><td>AWG 18</td><td>one groove (back side)</td></tr> <tr><td>1 mm²</td><td>AWG 18</td><td>one groove</td></tr> <tr><td>1,5 mm²</td><td>AWG 16</td><td>two grooves</td></tr> <tr><td>2,5 mm²</td><td>AWG 14</td><td>three grooves</td></tr> <tr><td>3 mm²</td><td>AWG 12</td><td>one wide groove</td></tr> <tr><td>4 mm²</td><td>AWG 12</td><td>with no grooves</td></tr> </table> <p>16A male crimp contacts for advanced opening</p> <table border="1"> <tr><td>0,5 mm²</td><td>AWG 20</td><td>with no grooves</td></tr> <tr><td>0,75 mm²</td><td>AWG 18</td><td>one groove (back side)</td></tr> <tr><td>1 mm²</td><td>AWG 18</td><td>one groove</td></tr> <tr><td>1,5 mm²</td><td>AWG 16</td><td>two grooves</td></tr> <tr><td>2,5 mm²</td><td>AWG 14</td><td>three grooves</td></tr> </table>	0,14-0,37 mm ²	AWG 26-22	three grooves	0,5 mm ²	AWG 20	with no grooves	0,75 mm ²	AWG 18	one groove (back side)	1 mm ²	AWG 18	one groove	1,5 mm ²	AWG 16	two grooves	2,5 mm ²	AWG 14	three grooves	3 mm ²	AWG 12	one wide groove	4 mm ²	AWG 12	with no grooves	0,14-0,37 mm ²	AWG 26-22	three grooves	0,5 mm ²	AWG 20	with no grooves	0,75 mm ²	AWG 18	one groove (back side)	1 mm ²	AWG 18	one groove	1,5 mm ²	AWG 16	two grooves	2,5 mm ²	AWG 14	three grooves	3 mm ²	AWG 12	one wide groove	4 mm ²	AWG 12	with no grooves	0,5 mm ²	AWG 20	with no grooves	0,75 mm ²	AWG 18	one groove (back side)	1 mm ²	AWG 18	one groove	1,5 mm ²	AWG 16	two grooves	2,5 mm ²	AWG 14	three grooves		<table border="1"> <tr><td>CCFA 0.3</td><td>CCFD 0.3</td></tr> <tr><td>CCFA 0.5</td><td>CCFD 0.5</td></tr> <tr><td>CCFA 0.7</td><td>CCFD 0.7</td></tr> <tr><td>CCFA 1.0</td><td>CCFD 1.0</td></tr> <tr><td>CCFA 1.5</td><td>CCFD 1.5</td></tr> <tr><td>CCFA 2.5</td><td>CCFD 2.5</td></tr> <tr><td>CCFA 3.0</td><td>CCFD 3.0</td></tr> <tr><td>CCFA 4.0</td><td>CCFD 4.0</td></tr> </table> <p style="writing-mode: vertical-rl; transform: rotate(180deg);">silver plated</p> <table border="1"> <tr><td>CCMA 0.3</td><td>CCMD 0.3</td></tr> <tr><td>CCMA 0.5</td><td>CCMD 0.5</td></tr> <tr><td>CCMA 0.7</td><td>CCMD 0.7</td></tr> <tr><td>CCMA 1.0</td><td>CCMD 1.0</td></tr> <tr><td>CCMA 1.5</td><td>CCMD 1.5</td></tr> <tr><td>CCMA 2.5</td><td>CCMD 2.5</td></tr> <tr><td>CCMA 3.0</td><td>CCMD 3.0</td></tr> <tr><td>CCMA 4.0</td><td>CCMD 4.0</td></tr> </table> <p style="writing-mode: vertical-rl; transform: rotate(180deg);">gold plated 1)</p>	CCFA 0.3	CCFD 0.3	CCFA 0.5	CCFD 0.5	CCFA 0.7	CCFD 0.7	CCFA 1.0	CCFD 1.0	CCFA 1.5	CCFD 1.5	CCFA 2.5	CCFD 2.5	CCFA 3.0	CCFD 3.0	CCFA 4.0	CCFD 4.0	CCMA 0.3	CCMD 0.3	CCMA 0.5	CCMD 0.5	CCMA 0.7	CCMD 0.7	CCMA 1.0	CCMD 1.0	CCMA 1.5	CCMD 1.5	CCMA 2.5	CCMD 2.5	CCMA 3.0	CCMD 3.0	CCMA 4.0	CCMD 4.0	
0,14-0,37 mm ²	AWG 26-22	three grooves																																																																																																
0,5 mm ²	AWG 20	with no grooves																																																																																																
0,75 mm ²	AWG 18	one groove (back side)																																																																																																
1 mm ²	AWG 18	one groove																																																																																																
1,5 mm ²	AWG 16	two grooves																																																																																																
2,5 mm ²	AWG 14	three grooves																																																																																																
3 mm ²	AWG 12	one wide groove																																																																																																
4 mm ²	AWG 12	with no grooves																																																																																																
0,14-0,37 mm ²	AWG 26-22	three grooves																																																																																																
0,5 mm ²	AWG 20	with no grooves																																																																																																
0,75 mm ²	AWG 18	one groove (back side)																																																																																																
1 mm ²	AWG 18	one groove																																																																																																
1,5 mm ²	AWG 16	two grooves																																																																																																
2,5 mm ²	AWG 14	three grooves																																																																																																
3 mm ²	AWG 12	one wide groove																																																																																																
4 mm ²	AWG 12	with no grooves																																																																																																
0,5 mm ²	AWG 20	with no grooves																																																																																																
0,75 mm ²	AWG 18	one groove (back side)																																																																																																
1 mm ²	AWG 18	one groove																																																																																																
1,5 mm ²	AWG 16	two grooves																																																																																																
2,5 mm ²	AWG 14	three grooves																																																																																																
CCFA 0.3	CCFD 0.3																																																																																																	
CCFA 0.5	CCFD 0.5																																																																																																	
CCFA 0.7	CCFD 0.7																																																																																																	
CCFA 1.0	CCFD 1.0																																																																																																	
CCFA 1.5	CCFD 1.5																																																																																																	
CCFA 2.5	CCFD 2.5																																																																																																	
CCFA 3.0	CCFD 3.0																																																																																																	
CCFA 4.0	CCFD 4.0																																																																																																	
CCMA 0.3	CCMD 0.3																																																																																																	
CCMA 0.5	CCMD 0.5																																																																																																	
CCMA 0.7	CCMD 0.7																																																																																																	
CCMA 1.0	CCMD 1.0																																																																																																	
CCMA 1.5	CCMD 1.5																																																																																																	
CCMA 2.5	CCMD 2.5																																																																																																	
CCMA 3.0	CCMD 3.0																																																																																																	
CCMA 4.0	CCMD 4.0																																																																																																	
		<p>CC 0.5 AN CC 0.7 AN CC 1.0 AN CC 1.5 AN CC 2.5 AN</p>																																																																																																

- characteristics according to EN 61984:
16A 250V 4kV 3
16A 230/400V 4kV 2
- cUL - UL for USA and Canada, CSA, CCC *, GL, EAC certified; * CQC certification being applied for
- rated voltage according to UL/CSA: 600V
- insulation resistance: ≥ 10 GΩ
- ambient temperature limit: -40 °C ... +125 °C
- are made of self-extinguishing thermoplastic resin UL 94 V0
- mechanical life: ≥ 500 cycles
- contact resistance: ≤ 1 mΩ
- according to recommendations EUROMAP N° 13/N° 14.1
- for maximum current load, see the following inserts load curves, for more information see page 559

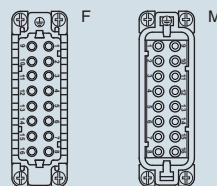


dimensions shown are not binding
and may be changed without notice

dimensions in mm

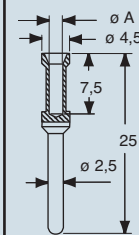


contacts side (front view)

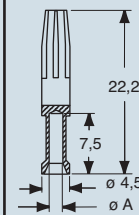
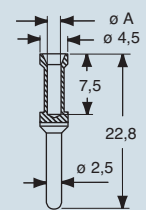


dimensions in mm

CCF and CCM



CC...AN



CCF, CCM and CC...AN contacts

conductor section	conductor slot	conductors stripping length
mm ²	ø A (mm)	(mm)
0,14-0,37	0,9	7,5
0,5	1,1	7,5
0,75	1,3	7,5
1,0	1,45	7,5
1,5	1,8	7,5
2,5	2,2	7,5
3	2,55	7,5
4	2,85	7,5

1) basic or high thickness gold plating page 481

CDC

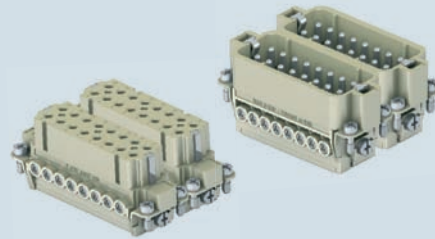
enclosures:
size "66.40"

page:

C-TYPE IP65/IP66 237 - 239

W-TYPE for aggressive environments 372

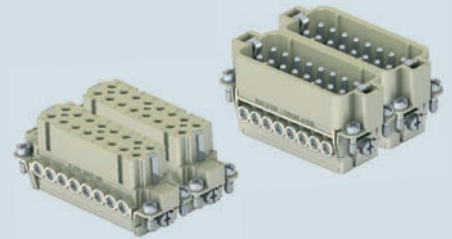
inserts,
screw terminal connection



silver plated contacts

NEW

inserts,
screw terminal connection



silver plated contacts

NEW

description

part No.

part No.

part No.

part No.

indirect, with pressure plate ¹⁾
female inserts, No. (1-16) and (17-32)
male inserts, No. (1-16) and (17-32)

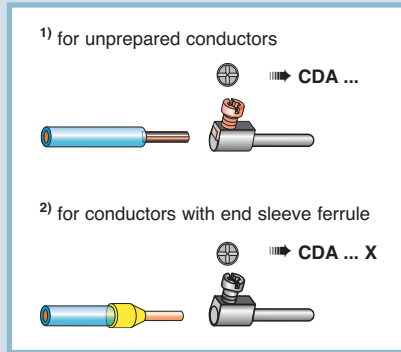
CDAF 16
CDAM 16

CDAF 16 N
CDAM 16 N

direct, without pressure plate ²⁾
female inserts, No. (1-16) and (17-32)
male inserts, No. (1-16) and (17-32)

CDAF 16 X
CDAM 16 X

CDAF 16 XN
CDAM 16 XN



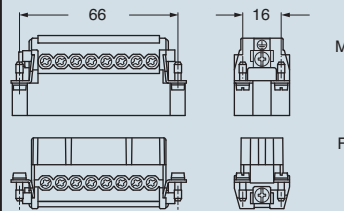
- characteristics according to EN 61984:

16A 250V 4kV 3

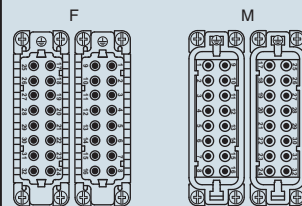
16A 230/400V 4kV 2

- cUL - UL for USA and Canada, CSA, CCC *, GL, EAC certified; * CQC certification being applied for
- rated voltage according to UL/CSA: 600V
- insulation resistance: $\geq 10 \text{ G}\Omega$
- ambient temperature limit: $-40 \text{ }^\circ\text{C} \dots +125 \text{ }^\circ\text{C}$
- are made of self-extinguishing thermoplastic resin UL 94 V0
- mechanical life: ≥ 500 cycles
- contact resistance: $\leq 1 \text{ m}\Omega$
- according to recommendations EUROMAP N° 12/N° 62
- for maximum current load, see the following inserts load curves, for more information see page 559

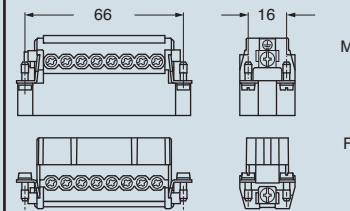
dimensions in mm



contacts side (front view)



dimensions in mm



contacts side (front view)

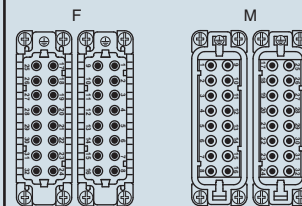
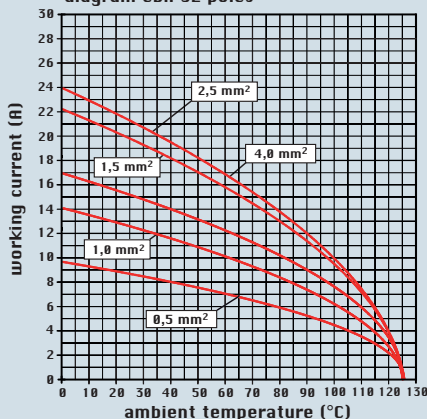


diagram CDA 32 poles



- inserts with pressure plate for conductors cross-sections: 0,5 - 4 mm² - AWG 20 - 12
- conductors stripping length: 7 mm
- terminal screw torque: 0,5 Nm (4.4 lb.in), for more information see page 34 and 35

- inserts without pressure plate for prepared conductors with cross-sections: 0,25 - 2,5 mm² - AWG 24 - 14
- the stripping length for prepared wires with bush crimped depends on that of the bush itself
- terminal screw torque: 0,5 Nm (4.4 lb.in), for more information see page 34 and 35

dimensions shown are not binding
and may be changed without notice

enclosures:
size "66.40"

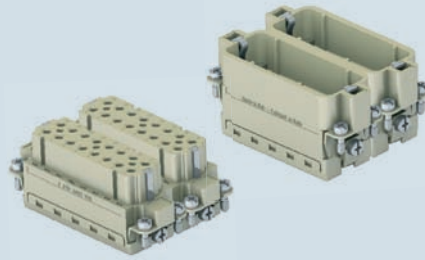
page:

C-TYPE IP65/IP66 237 - 239

W-TYPE for aggressive environments 372

- for contact crimping instructions, please see the crimping tool section (16A contacts, CCF, CCM and CC...AN series) on pages 534, 538, 544, 546, 548

inserts, crimp connections



NEW

16A crimp contacts
normal and for advanced opening
silver and gold plated



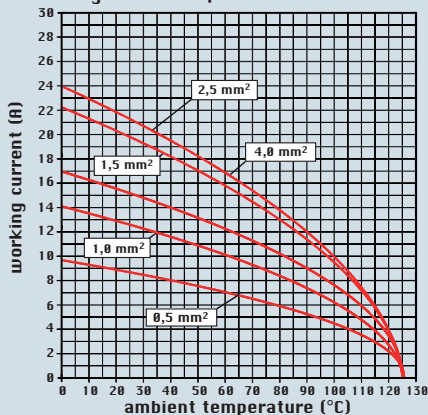
description	part No.	part No.	part No.	part No.
without contacts (to be ordered separately) female inserts, No. (1-16) and (17-32) male inserts, No. (1-16) and (17-32)	CDCF 16 CDCM 16	CDCF 16 N CDCM 16 N		
16A female contacts 0,14-0,37 mm ² AWG 26-22 three grooves 0,5 mm ² AWG 20 with no grooves 0,75 mm ² AWG 18 one groove (back side) 1 mm ² AWG 18 one groove 1,5 mm ² AWG 16 two grooves 2,5 mm ² AWG 14 three grooves 3 mm ² AWG 12 one wide groove 4 mm ² AWG 12 with no grooves			CCFA 0.3 CCFA 0.5 CCFA 0.7 CCFA 1.0 CCFA 1.5 CCFA 2.5 CCFA 3.0 CCFA 4.0	CCFD 0.3 CCFD 0.5 CCFD 0.7 CCFD 1.0 CCFD 1.5 CCFD 2.5 CCFD 3.0 CCFD 4.0
16A male contacts 0,14-0,37 mm ² AWG 26-22 three grooves 0,5 mm ² AWG 20 with no grooves 0,75 mm ² AWG 18 one groove (back side) 1 mm ² AWG 18 one groove 1,5 mm ² AWG 16 two grooves 2,5 mm ² AWG 14 three grooves 3 mm ² AWG 12 one wide groove 4 mm ² AWG 12 with no grooves			CCMA 0.3 CCMA 0.5 CCMA 0.7 CCMA 1.0 CCMA 1.5 CCMA 2.5 CCMA 3.0 CCMA 4.0	CCMD 0.3 CCMD 0.5 CCMD 0.7 CCMD 1.0 CCMD 1.5 CCMD 2.5 CCMD 3.0 CCMD 4.0
16A male crimp contacts for advanced opening 0,5 mm ² AWG 20 with no grooves 0,75 mm ² AWG 18 one groove (back side) 1 mm ² AWG 18 one groove 1,5 mm ² AWG 16 two grooves 2,5 mm ² AWG 14 three grooves			CC 0.5 AN CC 0.7 AN CC 1.0 AN CC 1.5 AN CC 2.5 AN	

silver plated

gold plated 1)

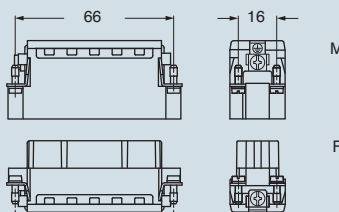
- characteristics according to EN 61984:
16A 250V 4kV 3
16A 230/400V 4kV 2
- cUL - UL for USA and Canada, CSA, CCC *, GL, EAC certified; * CQC certification being applied for
- rated voltage according to UL/CSA: 600V
- insulation resistance: ≥ 10 GΩ
- ambient temperature limit: -40 °C ... +125 °C
- are made of self-extinguishing thermoplastic resin UL 94 V0
- mechanical life: ≥ 500 cycles
- contact resistance: ≤ 1 mΩ
- according to recommendations EUROMAP N° 12/N° 62
- for maximum current load, see the following inserts load curves, for more information see page 559

diagram CDC 32 poles

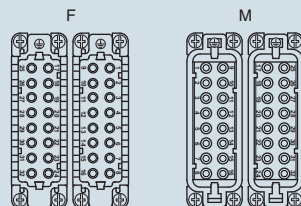


dimensions shown are not binding
and may be changed without notice

dimensions in mm

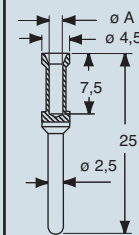


contacts side (front view)

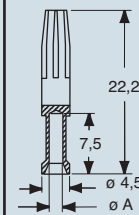
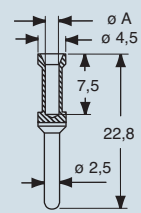


dimensions in mm

CCF and CCM



CC...AN



CCF, CCM and CC...AN contacts

conductor section	conductor slot	conductors stripping length
mm ²	ø A (mm)	(mm)
0,14-0,37	0,9	7,5
0,5	1,1	7,5
0,75	1,3	7,5
1,0	1,45	7,5
1,5	1,8	7,5
2,5	2,2	7,5
3	2,55	7,5
4	2,85	7,5

1) basic or high thickness gold plating page 481