



inserts:	page:
CD ..... 40 poles + ⊕	57
CDD ..... 72 poles + ⊕	70
CDS ..... 27 poles + ⊕	80
CSH ..... 16 poles + ⊕	93
CNE, CSE ..... 16 poles + ⊕	106
CCE ..... 16 poles + ⊕	112
CSS ..... 16 poles + ⊕	124
CQE ..... 32 poles + ⊕	140
CQEE ..... 40 poles + ⊕	146
CMCE ..... 6+2 (aux) poles + ⊕	150
CMSH ..... 6+2 (aux) poles + ⊕	151
CP ..... 6 poles + ⊕	162
CX ..... 6/36 and 12/2 poles + ⊕	170-171
CX ..... 4/0 and 4/2 poles + ⊕	172
MIXO ..... 4 modules	179-215

insert centre distance:  
77,5 x 27 mm

**bulkhead mounting housings**

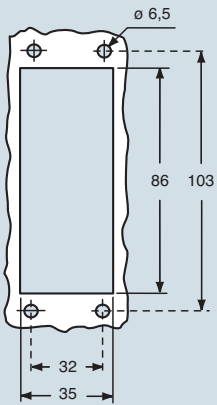


**surface mounting housings**



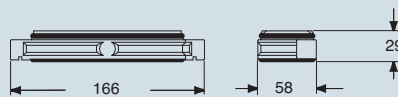
description	part No.	part No.	entry Pg	part No.	entry M
size "77.27"	<b>CGI 16</b>				
size "77.27"		<b>CGP 16.36</b>	36	<b>MGP 16.40</b>	40

panel cut-out for bulkhead mounting housings in mm



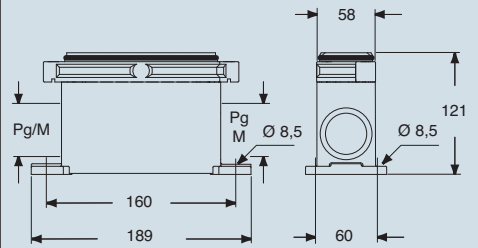
dimensions in mm

**CGI**



dimensions in mm

**CGP and MGP**



**dust protection cover**



**CGCP FX from page 497**

**CAUS** Type 4/4X/12



IP69K (compliant with DIN 40050-9)

and may be changed without notice

High protection IP68 version



inserts:	page:
<b>CD</b> ..... 40 poles + ⊕	57
<b>CDD</b> ..... 72 poles + ⊕	70
<b>CDS</b> ..... 27 poles + ⊕	80
<b>CSH</b> ..... 16 poles + ⊕	93
<b>CNE, CSE</b> ..... 16 poles + ⊕	106
<b>CCE</b> ..... 16 poles + ⊕	112
<b>CSS</b> ..... 16 poles + ⊕	124
<b>CQE</b> ..... 32 poles + ⊕	140
<b>CQEE</b> ..... 40 poles + ⊕	146
<b>CMCE</b> ..... 6+2 (aux) poles + ⊕	150
<b>CMSH</b> ..... 6+2 (aux) poles + ⊕	151
<b>CP</b> ..... 6 poles + ⊕	162
<b>CX</b> ..... 6/36 and 12/2 poles + ⊕	170-171
<b>CX</b> ..... 4/0 and 4/2 poles + ⊕	172
<b>MIXO</b> ..... 4 modules	179-215

insert centre distance:  
**77,5 x 27 mm**

**hoods**



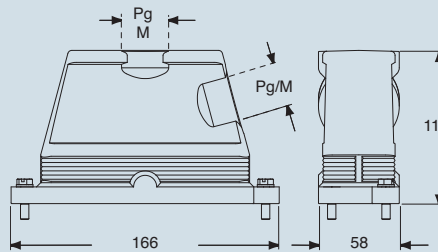
**covers**



description	part No.	entry Pg	part No.	entry M	part No.
with side entry					
size "77.27"	<b>CGO 16.21</b>	21	<b>MGO 16.32</b>	32	
size "77.27"	<b>CGO 16.29</b>	29	<b>MGO 16.40</b>	40	
size "77.27"	<b>CGO 16.36</b>	36	<b>MGO 16.50</b>	50	
with top entry					
size "77.27"			<b>MGV 16.25</b>	25	
size "77.27"			<b>MGV 16.225</b>	25x2	
size "77.27"	<b>CGV 16.21</b>	21	<b>MGV 16.32</b>	32	
size "77.27"	<b>CGV 16.221</b>	21x2			
size "77.27"	<b>CGV 16.29</b>	29	<b>MGV 16.40</b>	40	
size "77.27"	<b>CGV 16.36</b>	36	<b>MGV 16.50</b>	50	
size "77.27"					<b>CGC 16</b>

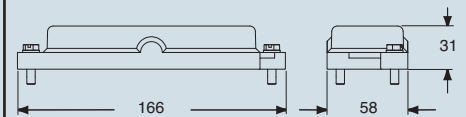
dimensions in mm

**CGO/MGO and CGV/MGV**



dimensions in mm

**CGC**



**ILME**® Type 4/4X/12



IP69K (compliant with DIN 40050-9)

dimensions shown are not binding and may be changed without notice

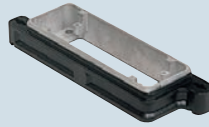
High protection IP68 version



inserts:		page:
CD .....	40 poles + ⊕	57
CDD .....	72 poles + ⊕	70
CDS .....	27 poles + ⊕	80
CSH .....	16 poles + ⊕	93
CNE, CSE .....	16 poles + ⊕	106
CCE .....	16 poles + ⊕	112
CSS .....	16 poles + ⊕	124
CQE .....	32 poles + ⊕	140
CQEE .....	40 poles + ⊕	146
CMCE .....	6+2 (aux) poles + ⊕	150
CMSH .....	6+2 (aux) poles + ⊕	151
CP .....	6 poles + ⊕	162
CX .....	6/36 and 12/2 poles + ⊕	170-171
CX .....	4/0 and 4/2 poles + ⊕	172
MIXO .....	4 modules	179-215

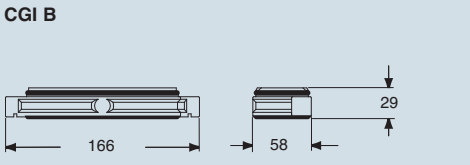
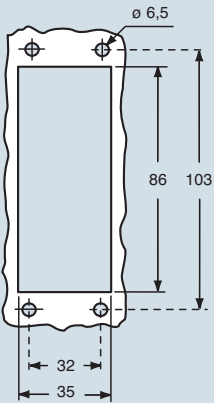
insert centre distance:  
77,5 x 27 mm

**bulkhead mounting housings**



description	part No.
size "77.27"	<b>CGI 16 B</b>

panel cut-out for bulkhead mounting housings in mm	dimensions in mm
--	------------------



**dust protection cover**



**CGCP FX from page 497**

**CAUS**® Type 4/4X/12



IP69K (compliant with DIN 40050-9)

dimensions shown are not binding and may be changed without notice

High protection IP68 version

inserts:	page:
<b>CD</b> ..... 40 poles + ⊕	57
<b>CDD</b> ..... 72 poles + ⊕	70
<b>CDS</b> ..... 27 poles + ⊕	80
<b>CSH</b> ..... 16 poles + ⊕	93
<b>CNE, CSE</b> ..... 16 poles + ⊕	106
<b>CCE</b> ..... 16 poles + ⊕	112
<b>CSS</b> ..... 16 poles + ⊕	124
<b>CQE</b> ..... 32 poles + ⊕	140
<b>CQEE</b> ..... 40 poles + ⊕	146
<b>CMCE</b> ..... 6+2 (aux) poles + ⊕	150
<b>CMSH</b> ..... 6+2 (aux) poles + ⊕	151
<b>CP</b> ..... 6 poles + ⊕	162
<b>CX</b> ..... 6/36 and 12/2 poles + ⊕	170-171
<b>CX</b> ..... 4/0 and 4/2 poles + ⊕	172
<b>MIXO</b> ..... 4 modules	179-215

insert centre distance:  
**77,5 x 27 mm**

**hoods**



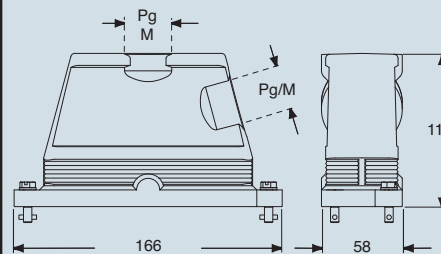
**covers**



description	part No.	entry Pg	part No.	entry M	part No.
with side entry					
size "77.27"	<b>CGO 16.21 B</b>	21	<b>MGO 16.32 B</b>	32	
size "77.27"	<b>CGO 16.29 B</b>	29	<b>MGO 16.40 B</b>	40	
size "77.27"	<b>CGO 16.36 B</b>	36	<b>MGO 16.50 B</b>	50	
with top entry					
size "77.27"			<b>MGV 16.25 B</b>	25	
size "77.27"			<b>MGV 16.225 B</b>	25x2	
size "77.27"	<b>CGV 16.21 B</b>	21	<b>MGV 16.32 B</b>	32	
size "77.27"	<b>CGV 16.221 B</b>	21x2			
size "77.27"	<b>CGV 16.29 B</b>	29	<b>MGV 16.40 B</b>	40	
size "77.27"	<b>CGV 16.36 B</b>	36	<b>MGV 16.50 B</b>	50	
size "77.27"					<b>CGC 16 B</b>

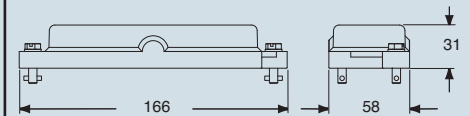
dimensions in mm

**CGO/MGO B and CGV/MGV B**



dimensions in mm

**CGC B**



**CALUS**® Type 4/4X/12



IP69K (compliant with DIN 40050-9)

dimensions shown are not binding and may be changed without notice