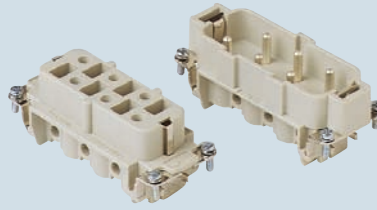


enclosures:  
size "77.27" page:

C-TYPE IP65/IP66 .....	250 - 256
C7 IP67, two levers .....	276
V-TYPE IP65/IP66, single lever .....	282/292 - 295
BIG hoods .....	312 - 315
T-TYPE IP65 insulating .....	330 - 331
T-TYPE / W IP66 insulating .....	340 - 341
HYGIENIC T-TYPE / H IP66/IP69 .....	354 - 355
HYGIENIC T-TYPE / C IP66/IP69, -50 °C .....	362 - 363
W-TYPE for aggressive environments .....	375
EMC .....	394
for 180 °C .....	400
central lever .....	408 - 409
IP68 .....	428 - 431
LS-TYPE .....	454 - 455

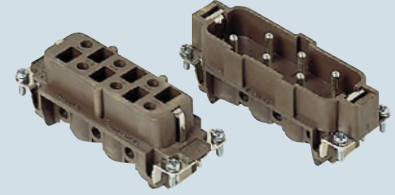
panel supports: page:  
COB .....

inserts,  
screw terminal connection



silver plated contacts

inserts,  
screw terminal connection



silver plated contacts

description part No.  
indirect, with plate female inserts with female contacts male inserts with male contacts

part No. CPF 06 CPM 06

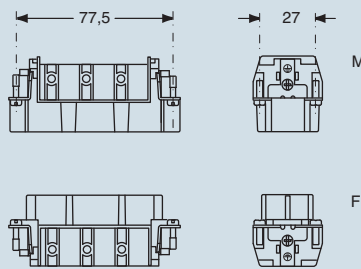
part No. CPF 06 RY CPM 06 RY

indirect, with plate, use in temperatures up to 180 °C female inserts with female contacts, brown male inserts with male contacts, brown

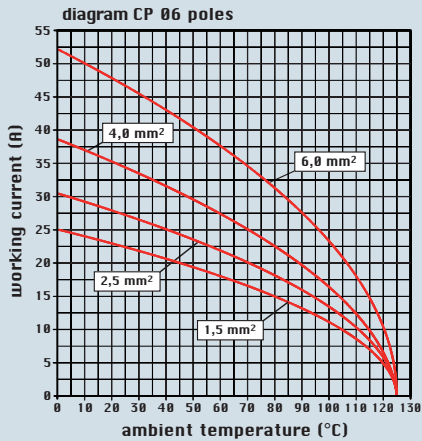
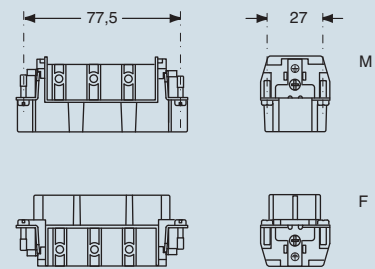
CPF 06 RY CPM 06 RY

- characteristics according to EN 61984: **35A 400/690V 6kV 3**
- UL, CSA, CCC \*, EAC certified
- \* CQC certification being applied for
- rated voltage according to UL/CSA: 600V
- insulation resistance:  $\geq 10$  G $\Omega$
- ambient temperature limit: -40 °C ... +125 °C (CP RY version up to 180 °C)
- are made of self-extinguishing thermoplastic resin UL 94 V0
- mechanical life:  $\geq 500$  cycles
- contact resistance:  $\leq 0.5$  m $\Omega$
- for maximum current load, see the following load curves inserts, for more information see page 562

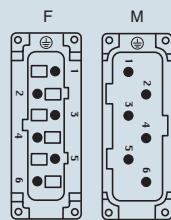
dimensions in mm



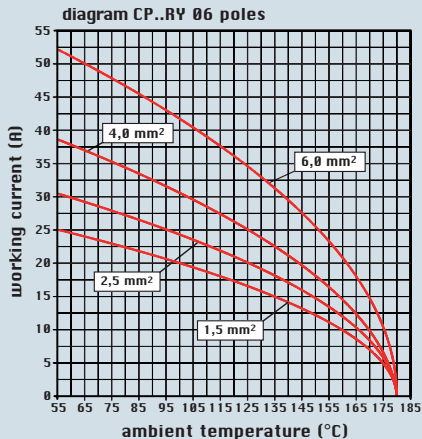
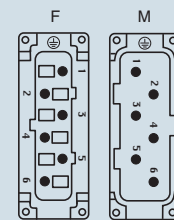
dimensions in mm



contacts side (front view)



contacts side (front view)



- inserts with plate, for section conductors: 1,50 - 6 mm<sup>2</sup> - AWG 16 - 10
- conductors stripping length: 10,5 mm
- terminal screw torque: 1,2 Nm (10,7 lb.in), for more information see page 34 and 35

- inserts with plate, for section conductors: 1,50 - 6 mm<sup>2</sup> - AWG 16 - 10
- conductors stripping length: 10,5 mm
- terminal screw torque: 1,2 Nm (10,7 lb.in), for more information see page 34 and 35

dimensions shown are not binding and may be changed without notice

CP - CP..RY

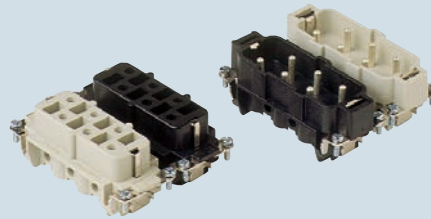
enclosures:  
size "77.62"

page:

C-TYPE IP65/IP66 ..... 267 - 270

W-TYPE for aggressive environments ..... 377

inserts,  
screw terminal connection



silver  
plated  
contacts

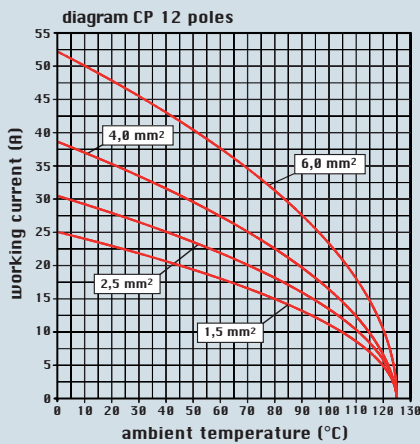
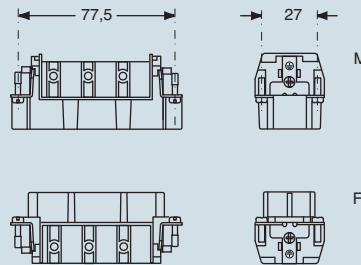
description	part No.	part No.
indirect, with plate female inserts No. (1-6), white and black male inserts No. (1-6), white and black	<b>CPF 06</b> <b>CPM 06</b>	<b>CPF 06 N</b> <b>CPM 06 N</b>

- characteristics according to EN 61984:

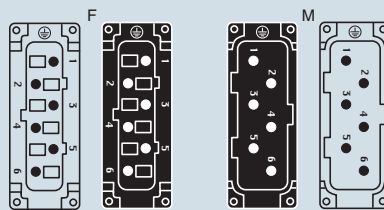
**35A 400/690V 6kV 3**

- UL, CSA, CCC \*, EAC certified
- \* CQC certification being applied for
- rated voltage according to UL/CSA: 600V
- insulation resistance:  $\geq 10 \text{ G}\Omega$
- ambient temperature limit:  $-40 \text{ }^\circ\text{C} \dots +125 \text{ }^\circ\text{C}$
- are made of self-extinguishing thermoplastic resin UL 94 V0
- mechanical life:  $\geq 500$  cycles
- contact resistance:  $\leq 0.5 \text{ m}\Omega$
- for maximum current load, see the following load curves inserts, for more information see page 562

dimensions in mm



contacts side (front view)



- inserts with plate, for section conductors: 1,50 - 6 mm<sup>2</sup> - AWG 16 - 10
- conductors stripping length: 10,5 mm
- terminal screw torque: 1,2 Nm (10,7 lb.in), for more information see page 34 and 35

dimensions shown are not binding  
and may be changed without notice