

E-Xtreme® series

Titanium plasma protected

3.000 hours in salt spray tests



E-Xtreme® series

3.000 hours in salt spray tests

TECHNICAL DETAILS

The protection is granted also in case of impact with stones and sand. The materials are able to withstand UV radiations, a wide temperature range and harsh chemicals. The E-Xtreme® series is available in the **full range** of Ilme aluminum hoods and housings versions.

Applicable test standards

EN 61984:2010-04	Connectors - Safety requirements and tests
EN 60529: 1991 + A1: 2000 + A2: 2013	Degrees of protection provided by enclosures (IP code)
EN ISO 9227: 2012	Corrosion tests in artificial atmospheres - Salt spray tests
ASTM B117-16	Standard practice for operating salt spray (fog) apparatus
EN 60512 (series)	Connectors for electronic equipment - Tests and measurement
EN 60068-2-68: 1996	Environmental testing - Part 2-68: Tests - Test L: Dust and sand
EN ISO 20567-1: 2005	Paints and varnishes -- Determination of stone-chip resistance of coatings -- Part 1: Multi-impact testing

General specifications

Material	Aluminum die-cast
Painting	Epoxy powder coating
Colour	RAL 7016 (dark grey)
Locking lever, springs and pegs	Stainless steel
Lever handle	C-TYPE lever: Polyamide V-TYPE lever: Stainless steel
Gasket	FKM
Silicone-based compounds	Free (except version for -60 °C... +180 °C)
EN ISO 9227: 2012	3.000 hours (V-Type lever and hood with moulded pegs) 2.000 hours (C-Type lever and hood with riveted stainless steel bolts)
Temperature limits	-40 °C... +125 °C (-60 °C... +180 °C with silicone gasket)
Degree of protection according to IEC/EN 60529 (in mated and locked condition) (IP69K according to ISO 20653, former DIN 40050-9)	IP65, IP66, IP67, IP68 (CG), IP69, IP69K
Stone chipping test	ISO 20567-1
Dust and sand blasting test	EN 60068-2-68
Vibration test	EN 61373 cat. 1B, 3 axis EN 60068-2-6 10÷500 Hz 0,35mm/5g break point 60, 1 Hz 3 axis
Shock test	EN 61373 cat. 1B, 3 axis
UV resistance	EN ISO 4892-2, EN 50467 on locked housings
Ozone resistance	EN 50467 on locked housings
Chemical resistance	Cleaning fluids, anti-freezing fluids, mineral and synthetic oils, cooling fluids, diesel fuel

E-Xtreme® series

Corrosion-proof metal enclosures

ADVANTAGES

Metal hoods and housings intended for **extremely demanding environments**, with special protective treatment under painting. Their **special patented protective coating** assures a high level of protection against the corrosion even in case of long term exposure to salt mist.

- 3.000 hours in salt spray tests



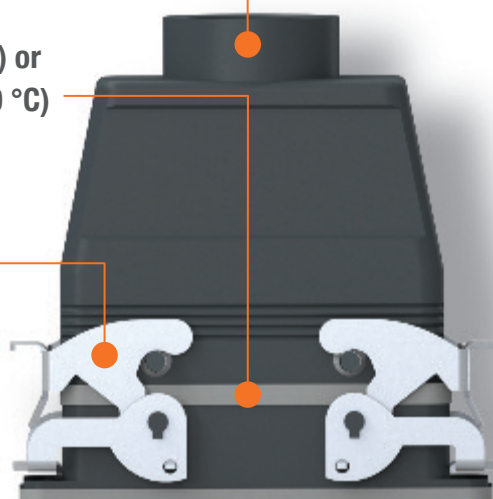
- IP66, IP67, IP69 degree of protection (EN 60529)

- corrosion-proof aluminium with a special coating under the powder painting colour RAL 7016 dark grey

- FKM gasket (-40 °C...+180 °C) or silicone gasket (-60 °C...+180 °C)

- V-Type lever or C-Type lever, hoods with moulded pegs or riveted stainless steel bolts

- durable protection against damage caused by stone chip, icing, salt mist, UV radiations and harsh gases



icing



very low temperatures



salt mist



impact resistant



UV radiations



chemical resistant



E-Xtreme® series



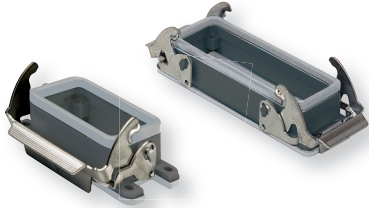
E-Xtreme® ENCLOSURES

EN ISO 9227 (2012): 3.000 hrs - 2.000 hrs

V-TYPE IP67 from page 42

Water tightness in a limited space

- Metallic
- Lever in stainless steel
- IP66/IP67



V-TYPE IP67 from page 42

Water tightness in a limited space

- Metallic
- Lever in stainless steel
- IP66/IP67



HOODS - MOULDED PEGS

- Metallic
- Moulded pegs
 - IP66/IP67



from page 43

EN ISO 9227 (2012): 2.000 hrs

CKAXE from page 50

Metallic

- IP44, IP66/67
- Lever in stainless steel



MKAXE .. IAF from page 50

Metallic

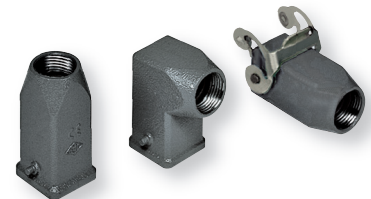
- IP44, IP66/67
- Lever in stainless steel



MKAE from page 50

Metallic

- IP44, IP66/67

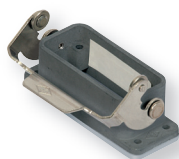


EN ISO 9227 (2012): 2.000 hrs

CZ IP67 from page 52

Water tightness in a limited space

- Metallic
- Lever in stainless steel
- IP66/IP67



CZ IP67 from page 52

Water tightness in a limited space

- Metallic
- Lever in stainless steel
- IP66/IP67



HOODS - RIVETED PEGS

Water tightness in a limited space

- Metallic
- Stainless steel riveted pegs
- IP66/IP67



from page 52

E-Xtreme® ENCLOSURES

EN ISO 9227 (2012): 2.000 hrs

C-TYPE

from page 54

Classic, flexible

- Metallic
- CLASS rotative lever
- IP65/IP66

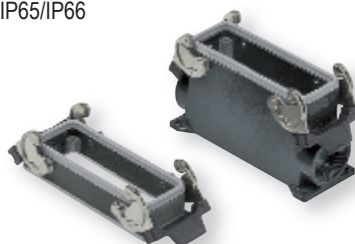


C-TYPE

from page 54

Classic, flexible

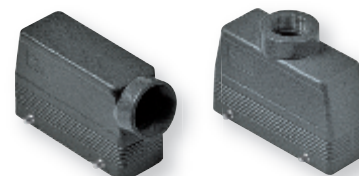
- Metallic
- CLASS rotative lever
- IP65/IP66



HOODS - RIVETED PEGS

Classic, flexible

- Metallic
- Stainless steel riveted pegs
- IP65/IP66



from page 54

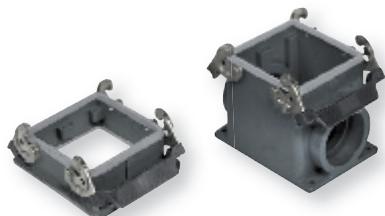
EN ISO 9227 (2012): 2.000 hrs

C-TYPE

from page 54

Classic, flexible

- Metallic
- CLASS rotative lever
- IP65/IP66



C-TYPE

from page 54

Classic, flexible

- Metallic
- Lever in stainless steel
- IP65/IP66

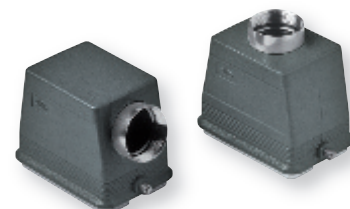


HOODS

from page 54

Classic, flexible

- Metallic
- Stainless steel riveted pegs
- IP65/IP66



EN ISO 9227 (2012): 3.000 hrs

IP68

from page 61

Water tight

- Mechanical robustness
- Resistant to chemical agents
- Screw or bayonet locking
- IP66/IP68



IP68

from page 61

Water tight

- Mechanical robustness
- Resistant to chemical agents
- Screw or bayonet locking
- IP66/IP68

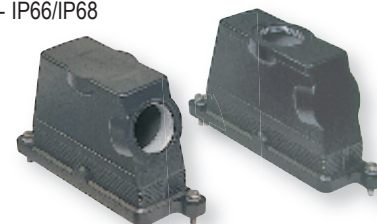


IP68

from page 61

Water tight

- Mechanical robustness
- Resistant to chemical agents
- Screw or bayonet locking
- IP66/IP68



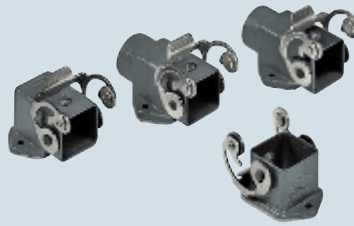


inserts:	page:
CK 3 poles + ⊕	48 *
CK 4 poles + ⊕	48 *
CKS 3 poles + ⊕	49 *
CKS 4 poles + ⊕	49 *
CKSH 3 poles + ⊕	7
CKSH 4 poles + ⊕	7
CD 8 poles	54 *
CQ 5 poles + ⊕	166 *
CQ 7 poles + ⊕	8
CQ 12 poles + ⊕	165 *
CQ 21 poles + ⊕	11

* refer to catalogue page CN.16

insert dimensions:
21 x 21 mm

**bulkhead mounting housings
straight and angled**



2.000 hrs

AVAILABLE 2017

hoods

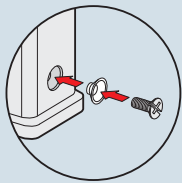


2.000 hrs

AVAILABLE 2017

description	part No.	part No. (entry - M 20)	part No.	part No. (entry - M 20)
with stainless steel lever without cable entry, with stainless steel lever with cable entry, with stainless steel lever with cable entry, with stainless steel lever, bulkhead hole closed	CKAXE 03 I CKAXE 03 IA	MKAXE IAP20 MKAXE AP20		
with pegs, top entry with pegs, side entry				MKAE V20 MKAE VA20
with stainless steel lever, top entry				MKAXE VG20
gasket and screw kit for IP66/IP67 ¹⁾ for CK, CQ 05, CKS inserts	CKR 65		CKR 65	
gasket and screw kit for IP66/IP67 ¹⁾ for CD 08 inserts	CKR 65 D		CKR 65 D	

1) To obtain the protection rating IP66/IP67 a kit is provided that includes a gasket to fit under the insert fixing screws supplied with the kit (see illustrative example).
CQ 07 and CQ 12 inserts are already supplied with a gasket and screw which ensure IP66/IP67 protection rating.



TECHNICAL DETAILS:

- 2.000 hours in salt spray tests (EN ISO 9227 Ed. 2.0)
- temperature limits: -40 °C ... +125 °C

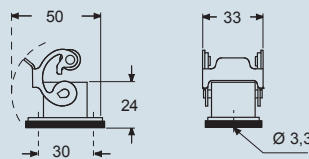
Note:

optional gasket for male insert in FKM material:
"CR 03 W" (replace the gasket male inserts)

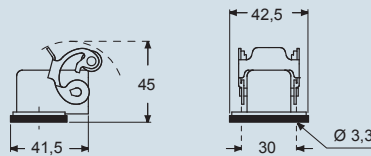


dimensions in mm

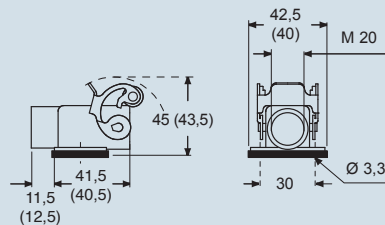
CKAXE I



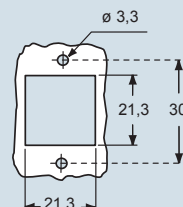
CKAXE IA



MKAXE IAP (MKAXE AP)

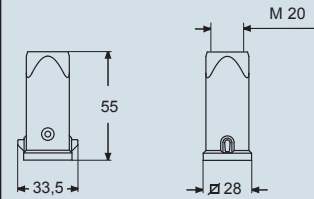


panel cut-out for bulkhead mounting housings in mm

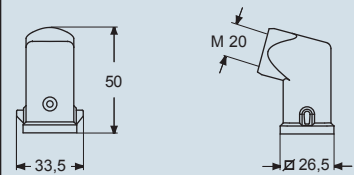


dimensions in mm

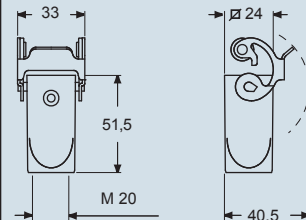
MKAE V



MKAE VA



MKAXE VG



IP66/IP67 with CKR 65 (D) ¹⁾
IP69 according to IEC/EN 60529

dimensions shown are not binding
and may be changed without notice

inserts:	page:
CK 3 poles + ⊕	48 *
CK 4 poles + ⊕	48 *
CKS 3 poles + ⊕	49 *
CKS 4 poles + ⊕	49 *
CKSH 3 poles + ⊕	7
CKSH 4 poles + ⊕	7
CD 8 poles	54 *
CQ 5 poles + ⊕	166 *
CQ 7 poles + ⊕	8
CQ 12 poles + ⊕	165 *
CQ 21 poles + ⊕	11

* refer to catalogue page CN.16

insert dimensions:
21 x 21 mm

angled bulkhead mounting housings



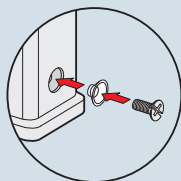
2.000 hrs

AVAILABLE 2017

description	part No.
stainless steel lever, M20 fixing thread (*)	MKAXE IAF20 1)
stainless steel lever, M25 fixing thread (*)	MKAXE IAF25 1)
gasket and screw kit for IP66/IP67 1) for CK, CQ 05, CKS inserts	CKR 65
gasket and screw kit for IP66/IP67 1) for CD 07/08 inserts	CKR 65 D

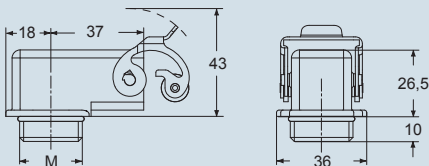
(*) locknut supplied on request, see catalogue cable glands (articles AS M20N and AS M25N metallic, AS M20L and AS M25L insulating)

1) To obtain the protection rating IP66/IP67 a kit is provided that includes a gasket to fit under the insert fixing screws supplied with the kit (see illustrative example).
CQ 07 and CQ 12 inserts are already supplied with a gasket and screw which ensure IP66/IP67 protection rating.

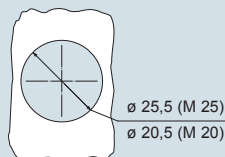


dimensions in mm

MKAXE IAF



panel cut-out

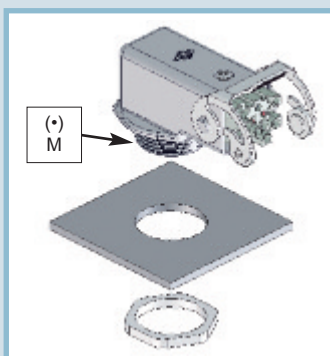


TECHNICAL DETAILS:

- 2.000 hours in salt spray tests (EN ISO 9227 Ed. 2.0)
- temperature limits: -40 °C ... +125 °C

Note:

optional gasket for male insert in FKM material:
"CR 03 W" (replace the gasket male inserts)



IP66/IP67 with CKR 65 (D) 1)
IP69 according to IEC/EN 60529

dimensions shown are not binding
and may be changed without notice

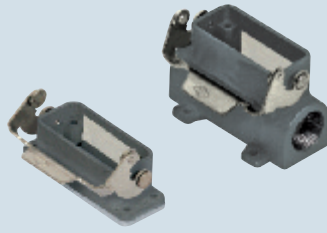


inserts:	page:
CD 15 poles + ⊕	55
CSAH 10 poles + ⊕	87
CDA 10 poles + ⊕	98
CDC 10 poles + ⊕	99
MIXO 1 module	179 - 214

refer to catalogue page CN.16

insert centre distance:
49 x 16 mm

housings and cover



lever in stainless steel

2.000 hrs

AVAILABLE 2017

hoods with riveted locking pegs



2.000 hrs

AVAILABLE 2017

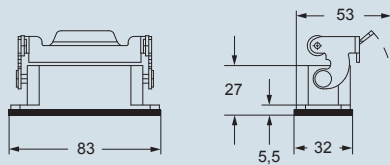
description	part No.	part No.	entry M	part No.	entry M
bulkhead mounting housing, with lever	CZ7IE 15 L	MZ7PE 15 L225	25 x 2	MZOE 15 L20	20
surface mounting housing, with lever				MZOE 15 L25	25
with pegs, side entry				MZAOE 15 L25	25
with pegs, side entry, high construction				MZVE 15 L20	20
with pegs, top entry				MZAVE 15 L25	25
with pegs, top entry, high construction					

TECHNICAL DETAILS:

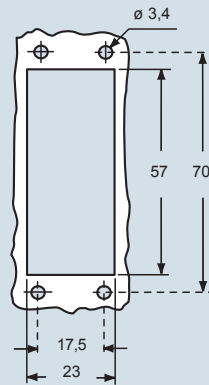
- The rigid lever, offers an IP66/IP67 protection rating (according to EN 60529) when fitted with a complete and coupled connector and used with ILME standard hoods in die cast aluminum with pegs (without adaptor, for further information please contact I.L.M.E. SpA)
- 2.000 hours in salt spray tests (EN ISO 9227: 2012)
- temperature limits: -40 °C ... +125 °C
- mechanical life: ≥ 500 cycles

dimensions in mm

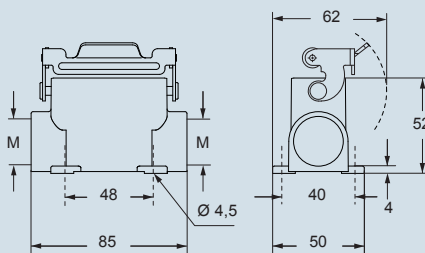
CZ7IE L



panel cut-out for bulkhead mounting housing in mm

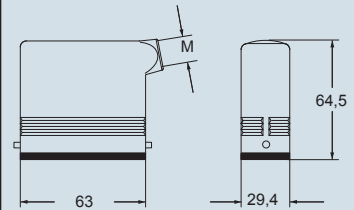


MZ7PE L

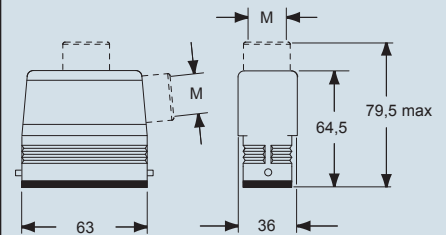


dimensions in mm

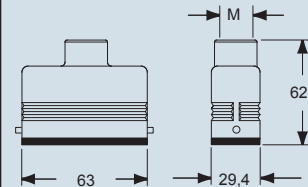
MZO E L



MZAOE L and MZAVE L



MZVE L



IP69 according to IEC/EN 60529

dimensions shown are not binding and may be changed without notice

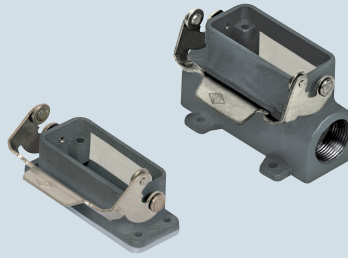


inserts:	page:
CD 25 poles + ⊕	56
CDD 38 poles + ⊕	68
CSAH 16 poles + ⊕	88
CDA 16 poles + ⊕	100
CDC 16 poles + ⊕	101

refer to catalogue page CN.16

insert centre distance:
66 x 16 mm

housings and cover

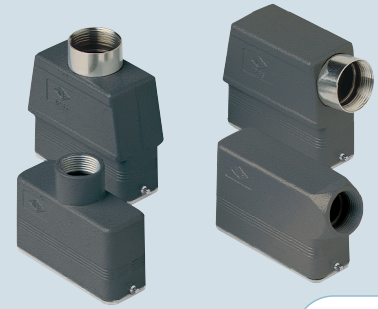


lever in stainless steel

2.000 hrs

AVAILABLE 2017

hoods with riveted locking pegs



2.000 hrs

AVAILABLE 2017

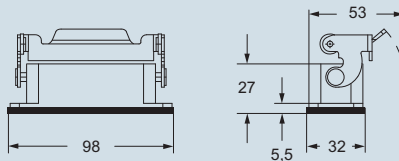
description	part No.	part No.	entry M	part No.	entry M
bulkhead mounting housing, with lever	CZ7IE 25 L	MZ7APE25L225	25 x 2	MZOE 25 L20	20
surface mounting housing, with lever, high construction				MZOE 25 L25	25
with pegs, side entry				MZAOE 25 L25	25
with pegs, side entry, high construction				MZVE 25 L20 *	20
with pegs, top entry				MZAVE 25 L25	25
with pegs, top entry, high construction					

TECHNICAL DETAILS:

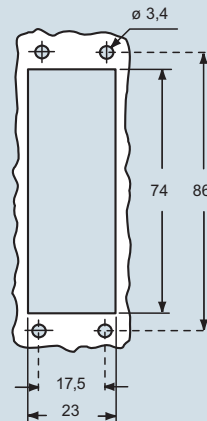
- The rigid lever, offers an IP66/IP67 protection rating (according to EN 60529) when fitted with a complete and coupled connector and used with ILME standard hoods in die cast aluminum with pegs (without adaptor, for further information please contact I.L.M.E. SpA)
- 2.000 hours in salt spray tests (EN ISO 9227: 2012)
- temperature limits: -40 °C ... +125 °C
- mechanical life: ≥ 500 cycles

dimensions in mm

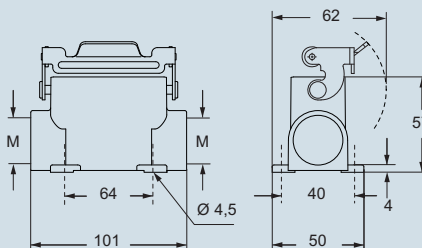
CZIE L



panel cut-out for bulkhead mounting housing in mm

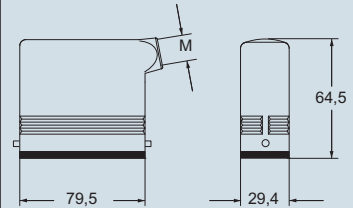


MZ7APE L

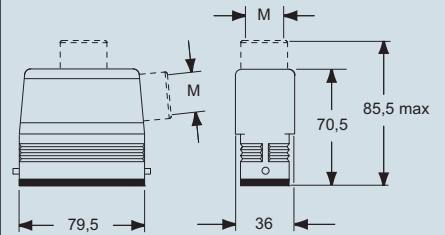


dimensions in mm

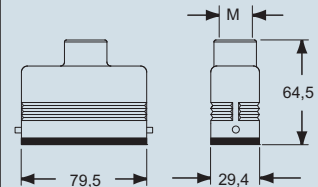
MZOE L



MZAOE L and MZAVE L



MZVE L



* can only be used with a complete cable gland (to be purchased separately)



IP69 according to IEC/EN 60529

dimensions shown are not binding and may be changed without notice

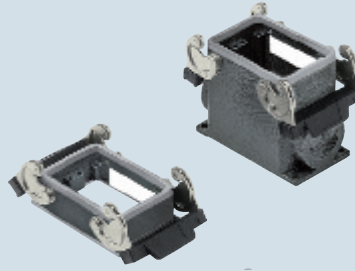


inserts:		page:
CD	50 poles + ⊕	58
CDD	76 poles + ⊕	71
CSAH	32 poles + ⊕	89
CDA	32 poles + ⊕	102
CDC	32 poles + ⊕	103

refer to catalogue page CN.16

insert dimensions:
2 x (66 x 16) mm

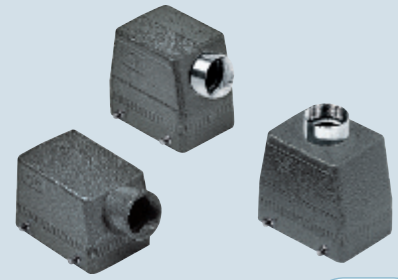
housings and cover



2.000 hrs

AVAILABLE 2017

hoods with riveted locking pegs



2.000 hrs

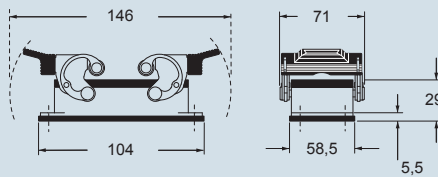
AVAILABLE 2017

description	part No.	part No.	entry M	part No.	entry M
bulkhead mounting housings, with lever surface mounting housing, with lever surface mounting housing, with lever	CHIE 50	MHPE 50.32 MHPE 50.240	32 40 x 2		
with pegs, side entry with pegs, side entry with pegs, side entry, high construction with pegs, top entry, high construction				MHOE 50.25 MHOE 50.32 MAOE 50.32 MAVE 50.32	25 32 32 32

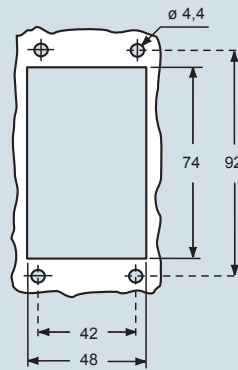
TECHNICAL DETAILS:
- 2.000 hours in salt spray tests (EN ISO 9227: 2012)
- temperature limits: -40 °C ... +125 °C
- mechanical life: ≥ 500 cycles

dimensions in mm

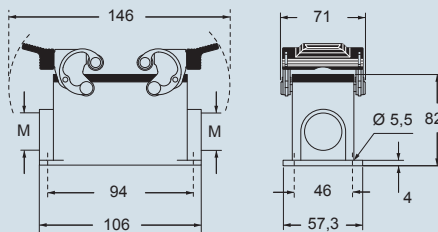
CHIE



panel cut-out for bulkhead mounting housing in mm

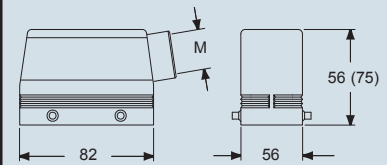


MHPE

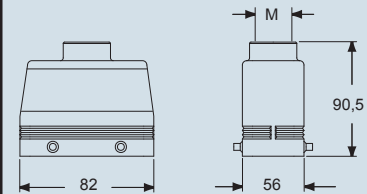


dimensions in mm

MHOE (MAOE)



MAVE



IP69 according to IEC/EN 60529

dimensions shown are not binding
and may be changed without notice



inserts:	page:
CDD 24 poles + ⊕	67 *
CDS 9 poles + ⊕	78 *
CDSH 9 poles + ⊕	9 **
CSH 6 poles + ⊕	91 *
CNE, CSE 6 poles + ⊕	104 *
CCE 6 poles + ⊕	110 *
CSS 6 poles + ⊕	122 *
CT, CTSE (16A) *	130 *
CQE 10 poles + ⊕	138 *
MIXO 2 modules	179 - 215 *

*) can be used only in bulkhead mounting housings

* refer to catalogue page CN.16
 ** refer to catalogue page News 2016

insert centre distance:
44 x 27 mm

**bulkhead mounting housings
 with single lever in stainless steel**



lever in stainless steel

3.000 hrs

AVAILABLE 2017

**surface mounting housings
 with single lever in stainless steel**



lever in stainless steel

2.000 hrs

AVAILABLE 2017

description
with lever, size "44.27"
with lever, size "44.27"
with lever, high construction, size "44.27"
with lever, high construction, size "44.27"
with lever, high construction, size "44.27"
with lever, high construction, size "44.27"

part No.
C7IE 06 L

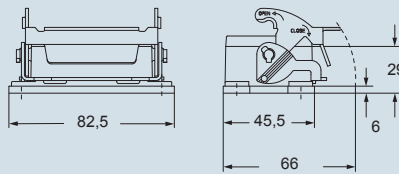
part No.	entry M
M7PE 06 L20	20
M7PE 06 L220	20 x 2
M7APE 06 L32	32
M7APE 06 L232	32 x 2
M7APE 06 L40	40
M7APE 06 L240	40 x 2

TECHNICAL DETAILS:

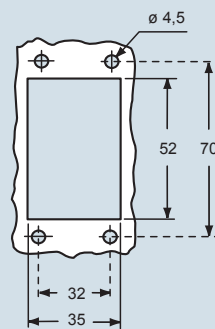
- the lever, due to the vertical closing movement, offers an IP66/IP67 protection rating (according to EN 60529) when fitted with a complete and coupled connector and used with ILME hoods in die cast aluminum with pegs (without adaptor, for further information please contact I.L.M.E. SpA)
- 3.000 hours in salt spray tests (EN ISO 9227: 2012) for bulkhead enclosures with V-TYPE lever and hood with moulded pegs (low number of mating cycles)
- 2.000 hours in salt spray tests (EN ISO 9227: 2012) for surface mounting housings
- temperature limits: -40 °C ... +125 °C on request -60 °C ... +180 °C with silicone gasket (125 °C - 180 °C with RY inserts)

dimensions in mm

C7IE L

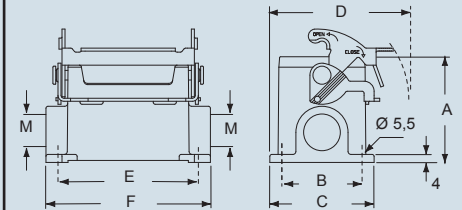


panel cut-out for bulkhead mounting housings in mm



dimensions in mm

M7PE L - M7APE L



type	A	B	C	D	E	F
M7PE 06 L	53	40	52	70	70	82
M7APE 06 L	73	45	57	72,5	70	82

For bulkhead mounting housings, IP66/IP67 protection rating is guaranteed for mounting on a sufficiently rigid panel; use suitable length M4 screws (negligible surface buckling when subjected to tightening couple on the fixing screws of 0,8 - 1,2 Nm or deformation caused by the weight of the complete connector).

In case of insufficient rigidity use of C7.. FL flanges (page 278 catalogue CN.16) is recommended, in which case use suitable length M4 screws and M4 (on the enclosure) and M4 (on the flange) flat/spring washers with M4 locknut.

In addition, the panel surface in contact with the flange gasket of the bulkhead mounting housings must be free from defects (deep scratches, grooves, burrs) that could negatively affect the performance of the gasket.



IP69 according to IEC/EN 60529

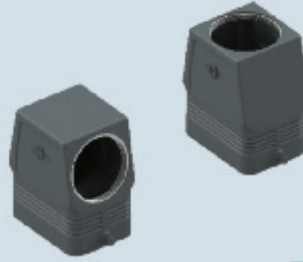
dimensions shown are not binding and may be changed without notice

inserts:	page:
CDD 24 poles + ⊕	67 *
CDS 9 poles + ⊕	78 *
CDSH 9 poles + ⊕	9 **
CSH 6 poles + ⊕	91 *
CNE, CSE 6 poles + ⊕	104 *
CCE 6 poles + ⊕	110 *
CSS 6 poles + ⊕	122 *
CQE 10 poles + ⊕	138 *
MIXO 2 modules	179 - 215 *

* refer to catalogue page CN.16
 ** refer to catalogue page News 2016

insert centre distance:
44 x 27 mm

hoods with 2 moulded pegs



3.000 hrs

AVAILABLE 2017

description	part No.	entry M
with pegs, side entry	MHOE 06 L20M	20
with pegs, side entry	MHOE 06 L25M	25
with pegs, side entry, high construction, without adaptor *	MFOE 06 L32M	32
with pegs, side entry, high construction, without adaptor *	MFOE 06 L40M	40
with pegs, top entry	MHVE 06 L20M ¹⁾	20
with pegs, top entry	MHVE 06 L25M ¹⁾	25
with pegs, top entry, high construction, without adaptor *	MFVE 06 L32M	32
with pegs, top entry, high construction, without adaptor *	MFVE 06 L40M	40

* enclosure without adaptor, threaded on the body, to be used only with a complete cable gland.

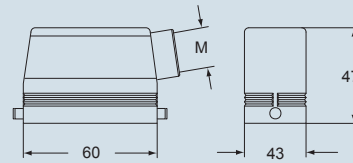
¹⁾ cannot be used with MIXO series

TECHNICAL DETAILS:

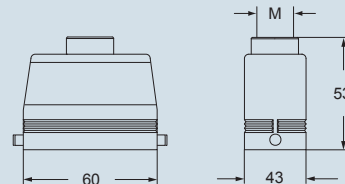
- 3.000 hours in salt spray tests (EN ISO 9227: 2012) for bulkhead enclosures with V-TYPE lever and hood with moulded pegs (low number of mating cycles)
- 2.000 hours in salt spray tests (EN ISO 9227: 2012) with other E-Xtreme® housings
- temperature limits: -40 °C ... +125 °C on request -60 °C ... +180 °C with silicone gasket (125 °C - 180 °C with RY inserts)
- alternatively, hoods with pegs are coupled with fixed enclosures:
 - C7 E-Xtreme®, IP66/IP67, page 40
 - C-TYPE E-Xtreme®, IP66, page 53

dimensions in mm

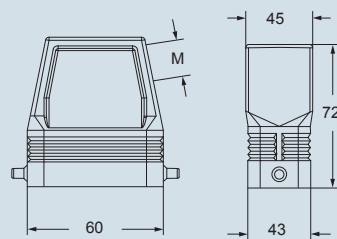
MHOE L..M



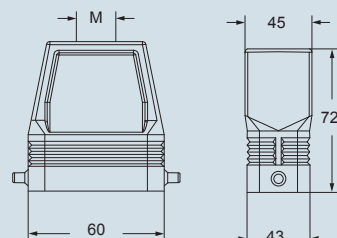
MHVE L..M



MFOE L..M



MFVE L..M



according to the type of lever
 IP69 according to IEC/EN 60529

dimensions shown are not binding
 and may be changed without notice



inserts:	page:
CDD 42 poles + ⊕	69 *
CDS 18 poles + ⊕	79 *
CDSH 18 poles + ⊕	10 **
CSH 10 poles + ⊕	92 *
CNE, CSE 10 poles + ⊕	105 *
CCE 10 poles + ⊕	111 *
CSS 10 poles + ⊕	123 *
CT, CTSE (16A) *) 10 poles + ⊕	131 *
CQE 18 poles + ⊕	139 *
CMCE 3+2 (aux) poles + ⊕	148 *
CMSH 3+2 (aux) poles + ⊕	149 *
CX 8/24 poles + ⊕	169 *
MIXO 3 modules	179 - 215 *

*) can be used only in bulkhead mounting housings

* refer to catalogue page CN.16

** refer to catalogue page News 2016

insert centre distance: 57 x 27 mm

bulkhead mounting housings with 2 levers in stainless steel

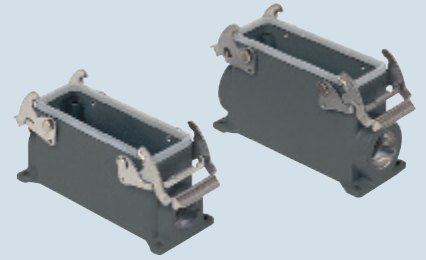


lever in stainless steel

3.000 hrs

AVAILABLE 2017

surface mounting housings with 2 levers in stainless steel



lever in stainless steel

2.000 hrs

AVAILABLE 2017

description
with levers, size "57.27"
with levers, size "57.27"
with levers, high construction, size "57.27"
with levers, high construction, size "57.27"
with levers, high construction, size "57.27"
with levers, high construction, size "57.27"

part No.
C7IE 10

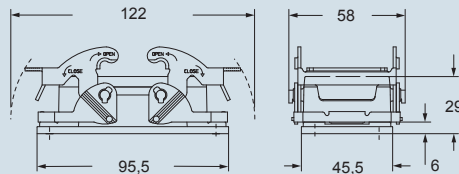
part No.	entry M
M7PE 10.20	20
M7PE 10.220	20 x 2
M7APE 10.32	32
M7APE 10.232	32 x 2
M7APE 10.40	40
M7APE 10.240	40 x 2

TECHNICAL DETAILS:

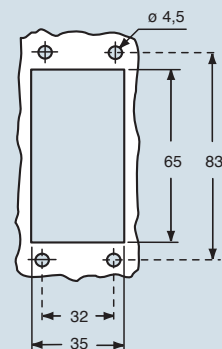
- the lever, due to the vertical closing movement, offers an IP66/IP67 protection rating (according to EN 60529) when fitted with a complete and coupled connector and used with ILME hoods in die cast aluminum with pegs (without adaptor, for further information please contact I.L.M.E. SpA)
- 3.000 hours in salt spray tests (EN ISO 9227: 2012) for bulkhead enclosures with V-TYPE lever and hood with moulded pegs (low number of mating cycles)
- 2.000 hours in salt spray tests (EN ISO 9227: 2012) for surface mounting housings
- temperature limits: -40 °C ... +125 °C on request -60 °C ... +180 °C with silicone gasket (125 °C - 180 °C with RY inserts)

dimensions in mm

C7IE

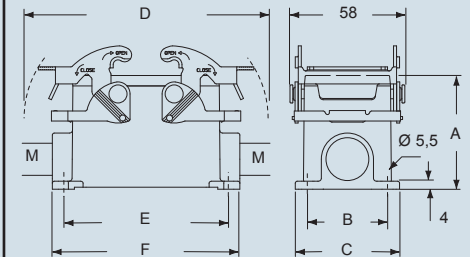


panel cut-out for bulkhead mounting housings in mm



dimensions in mm

M7PE - M7APE



type	A	B	C	D	E	F
M7PE 10	57	40	52	122	82	93,5
M7APE 10	73	45	57	122	82	93,5

For bulkhead mounting housings, IP66/IP67 protection rating is guaranteed for mounting on a sufficiently rigid panel; use suitable length M4 screws (negligible surface buckling when subjected to tightening couple on the fixing screws of 0,8 - 1,2 Nm or deformation caused by the weight of the complete connector).

In case of insufficient rigidity use of C7.. FL flanges (page 278 catalogue CN.16) is recommended, in which case use suitable length M4 screws and M4 (on the enclosure) and M4 (on the flange) flat/spring washers with M4 locknut.

In addition, the panel surface in contact with the flange gasket of the bulkhead mounting housings must be free from defects (deep scratches, grooves, burrs) that could negatively affect the performance of the gasket.



IP69 according to IEC/EN 60529

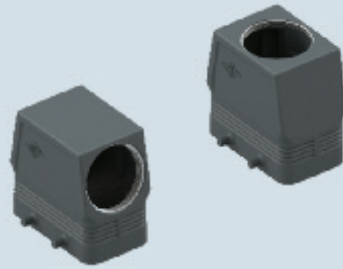
dimensions shown are not binding and may be changed without notice

inserts:		page:
CDD	42 poles + ⊕	69 *
CDS	18 poles + ⊕	79 *
CDSH	18 poles + ⊕	10 **
CSH	10 poles + ⊕	92 *
CNE, CSE	10 poles + ⊕	105 *
CCE	10 poles + ⊕	111 *
CSS	10 poles + ⊕	123 *
CQE	18 poles + ⊕	139 *
CMCE	3+2 (aux) poles + ⊕	148 *
CMSH	3+2 (aux) poles + ⊕	149 *
CX	8/24 poles + ⊕	169 *
MIXO	3 modules	179 - 215 *

* refer to catalogue page CN.16
 ** refer to catalogue page News 2016

insert centre distance: 57 x 27 mm

hoods with 4 moulded pegs



3.000 hrs

AVAILABLE 2017

description	part No.	entry M
with pegs, side entry	MHOE 10.20M	20
with pegs, side entry	MHOE 10.25M	25
with pegs, side entry, high construction, without adaptor *	MFOE 10.32M	32
with pegs, side entry, high construction, without adaptor *	MFOE 10.40M	40
with pegs, top entry	MHVE 10.20M **	20
with pegs, top entry	MHVE 10.25M	25
with pegs, top entry, high construction, without adaptor *	MFVE 10.32M	32
with pegs, top entry, high construction, without adaptor *	MFVE 10.40M	40

* enclosure without adaptor, threaded on the body, to be used only with a complete cable gland.

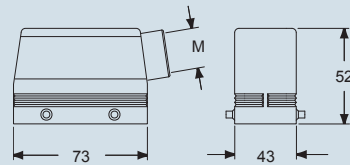
** can only be used with a complete cable gland (to be purchased separately)

TECHNICAL DETAILS:

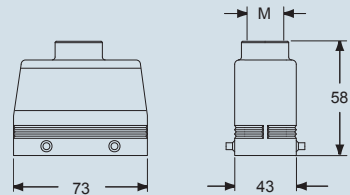
- 3.000 hours in salt spray tests (EN ISO 9227: 2012) for bulkhead enclosures with V-TYPE lever and hood with moulded pegs (low number of mating cycles)
- 2.000 hours in salt spray tests (EN ISO 9227: 2012) with other E-Xtreme® housings
- temperature limits: -40 °C ... +125 °C on request -60 °C ... +180 °C with silicone gasket (125 °C - 180 °C with RY inserts)
- alternatively, hoods with pegs are coupled with fixed enclosures:
 - C7 E-Xtreme®, IP66/IP67, page 42
 - C-TYPE E-Xtreme®, IP66, page 54

dimensions in mm

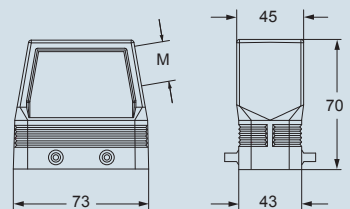
MHOE..M



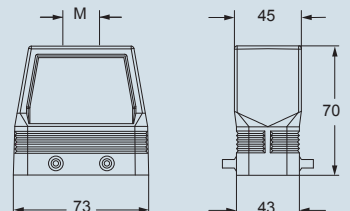
MHVE..M



MFOE..M



MFVE..M



according to the type of lever
 IP69 according to IEC/EN 60529

dimensions shown are not binding
 and may be changed without notice

inserts:		page:
CD	40 poles + ⊕	57 *
CT, CTS (10A) *)	40 poles + ⊕	64 *
CDD	72 poles + ⊕	70 *
CDS	27 poles + ⊕	80 *
CDSH	27 poles + ⊕	11 **
CSH	16 poles + ⊕	93 *
CNE, CSE	16 poles + ⊕	106 *
CCE	16 poles + ⊕	112 *
CSS	16 poles + ⊕	124 *
CT, CTSE (16A) *)	16 poles + ⊕	132 *
CQE	32 poles + ⊕	140 *
CQEE	40 poles + ⊕	146 *
CMCE, CMSH 6+2 (aux)	poles + ⊕	150-151 *
CP	6 poles + ⊕	162 *
CX	6/12 poles + ⊕	21 **
CX	6/36 and 12/2 poles + ⊕	170-171 *
CX	4/0 and 4/2 poles + ⊕	172 *
MIXO	4 modules	179-215 *

*) can be used only in bulkhead mounting housings

* refer to catalogue page CN.16

** refer to catalogue page News 2016

insert centre distance: 77,5 x 27 mm

bulkhead mounting housings with 2 levers in stainless steel

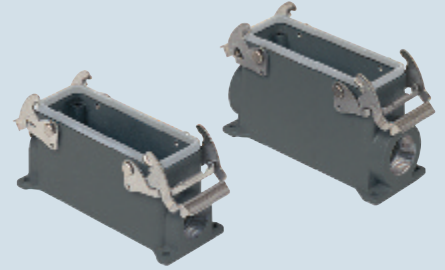


lever in stainless steel

3.000 hrs

AVAILABLE 2017

surface mounting housings with 2 levers in stainless steel



lever in stainless steel

2.000 hrs

AVAILABLE 2017

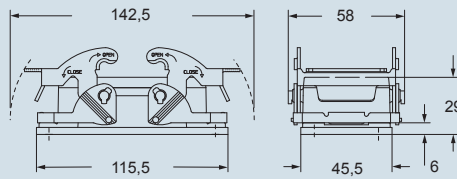
description	part No.	part No.	entry M
with levers, size "77.27"	C7IE 16		
with levers, size "77.27"		M7PE 16.25	25
with levers, size "77.27"		M7PE 16.225	25 x 2
with levers, high construction, size "77.27"		M7APE 16.32	32
with levers, high construction, size "77.27"		M7APE 16.232	32 x 2
with levers, high construction, size "77.27"		M7APE 16.40	40
with levers, high construction, size "77.27"		M7APE 16.240	40 x 2

TECHNICAL DETAILS:

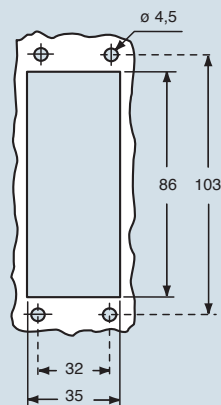
- the lever, due to the vertical closing movement, offers an IP66/IP67 protection rating (according to EN 60529) when fitted with a complete and coupled connector and used with ILME hoods in die cast aluminum with pegs (without adaptor, for further information please contact I.L.M.E. SpA)
- 3.000 hours in salt spray tests (EN ISO 9227: 2012) for bulkhead enclosures with V-TYPE lever and hood with moulded pegs (low number of mating cycles)
- 2.000 hours in salt spray tests (EN ISO 9227: 2012) for surface mounting housings
- temperature limits: -40 °C ... +125 °C on request -60 °C ... +180 °C with silicone gasket (125 °C - 180 °C with RY inserts)

dimensions in mm

C7IE



panel cut-out for bulkhead mounting housings in mm



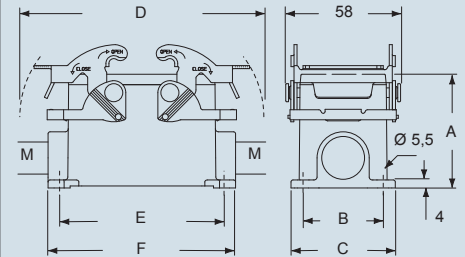
For bulkhead mounting housings, IP66/IP67 protection rating is guaranteed for mounting on a sufficiently rigid panel; use suitable length M4 screws (negligible surface buckling when subjected to tightening couple on the fixing screws of 0,8 - 1,2 Nm or deformation caused by the weight of the complete connector).

In case of insufficient rigidity use of C7.. FL flanges (page 278 catalogue CN.16) is recommended, in which case use suitable length M4 screws and M4 (on the enclosure) and M4 (on the flange) flat/spring washers with M4 locknut.

In addition, the panel surface in contact with the flange gasket of the bulkhead mounting housings must be free from defects (deep scratches, grooves, burrs) that could negatively affect the performance of the gasket.

dimensions in mm

M7PE - M7APE



type	A	B	C	D	E	F
M7PE 16	63	45	57	142,5	105	117
M7APE 16	77	45	57	142,5	105	117



IP69 according to IEC/EN 60529

dimensions shown are not binding and may be changed without notice

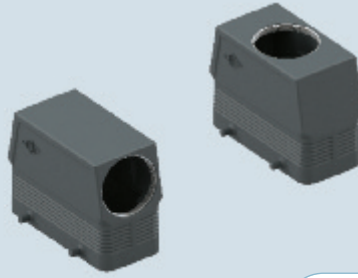
inserts:		page:
CD	40 poles + ⊕	57 *
CDD	72 poles + ⊕	70 *
CDS	27 poles + ⊕	80 *
CDSH	27 poles + ⊕	11 **
CSH	16 poles + ⊕	93 *
CNE, CSE	16 poles + ⊕	106 *
CCE	16 poles + ⊕	112 *
CSS	16 poles + ⊕	124 *
CQE	32 poles + ⊕	140 *
CQEE	40 poles + ⊕	146 *
CMCE, CMSH 6+2 (aux)	poles + ⊕	150-151 *
CP	6 poles + ⊕	162 *
CX	6/12 poles + ⊕	21 **
CX	6/36 and 12/2 poles + ⊕	170-171 *
CX	4/0 and 4/2 poles + ⊕	172 *
MIXO	4 modules	179-215 *

* refer to catalogue page CN.16

** refer to catalogue page News 2016

insert centre distance: 77,5 x 27 mm

hoods with 4 moulded pegs



3.000 hrs

AVAILABLE 2017

description	part No.	entry M
with pegs, side entry	MHOE 16.25M	25
with pegs, side entry	MHOE 16.32M	32
with pegs, side entry, high construction, without adaptor *	MFOE 16.32M	32
with pegs, side entry, high construction, without adaptor *	MFOE 16.40M	40
with pegs, top entry	MHVE 16.25M **	25
with pegs, top entry	MHVE 16.32M	32
with pegs, top entry, high construction, without adaptor *	MFVE 16.32M	32
with pegs, top entry, high construction, without adaptor *	MFVE 16.40M	40

* enclosure without adaptor, threaded on the body, to be used only with a complete cable gland.

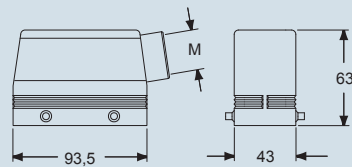
** can only be used with a complete cable gland (to be purchased separately)

TECHNICAL DETAILS:

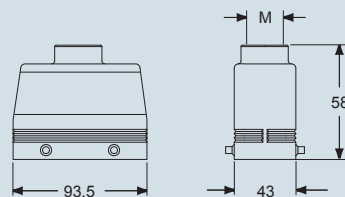
- 3.000 hours in salt spray tests (EN ISO 9227: 2012) for bulkhead enclosures with V-TYPE lever and hood with moulded pegs (low number of mating cycles)
- 2.000 hours in salt spray tests (EN ISO 9227: 2012) with other E-Xtreme® housings
- temperature limits: -40 °C ... +125 °C on request -60 °C ... +180 °C with silicone gasket (125 °C - 180 °C with RY inserts)
- alternatively, hoods with pegs are coupled with fixed enclosures:
 - C7 E-Xtreme®, IP66/IP67, page 44
 - C-TYPE E-Xtreme®, IP66, page 55

dimensions in mm

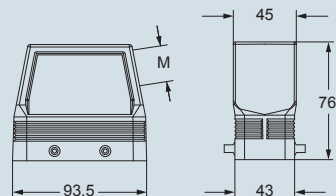
MHOE..M



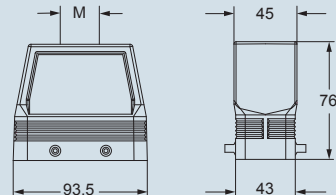
MHVE..M



MFOE..M



MFVE..M



according to the type of lever
IP69 according to IEC/EN 60529

dimensions shown are not binding
and may be changed without notice



inserts:		page:
CD	64 poles + ⊕	59 *
CT, CTS (10A) *) ..	64 poles + ⊕	65 *
CDD	108 poles + ⊕	72 *
CDS	42 poles + ⊕	81 *
CDSH	42 poles + ⊕	12 **
CSH	24 poles + ⊕	94 *
CNE, CSE	24 poles + ⊕	107 *
CCE	24 poles + ⊕	113 *
CSS	24 poles + ⊕	125 *
CT, CTSE (16A) *)	24 poles + ⊕	133 *
CQE	46 poles + ⊕	141 *
CQEE	64 poles + ⊕	147 *
CMCE	10+2 (aux) poles + ⊕	152 *
CMSH	10+2 (aux) poles + ⊕	153 *
CX	4/8 and 6/6 poles + ⊕	173 and 175 *
MIXO	6 modules	179-215 *

*) can be used only in bulkhead mounting housings

* refer to catalogue page CN.16

** refer to catalogue page News 2016

insert centre distance: 104 x 27 mm

bulkhead mounting housings with 2 levers in stainless steel

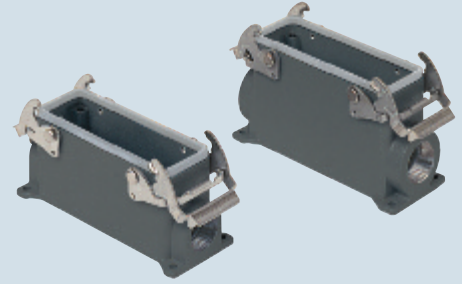


lever in stainless steel

3.000 hrs

AVAILABLE 2017

surface mounting housings with 2 levers in stainless steel



lever in stainless steel

2.000 hrs

AVAILABLE 2017

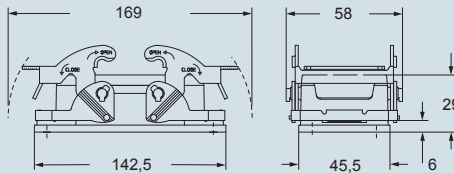
description	part No.	part No.	entry
		M	
with levers, size "104.27"	C7IE 24		
with levers, size "104.27"		M7PE 24.25	25
with levers, size "104.27"		M7PE 24.225	25 x 2
with levers, high construction, size "104.27"		M7APE 24.32	32
with levers, high construction, size "104.27"		M7APE 24.232	32 x 2
with levers, high construction, size "104.27"		M7APE 24.40	40
with levers, high construction, size "104.27"		M7APE 24.240	40 x 2

TECHNICAL DETAILS:

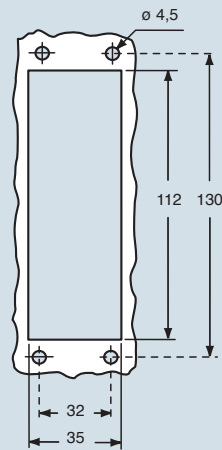
- the lever, due to the vertical closing movement, offers an IP66/IP67 protection rating (according to EN 60529) when fitted with a complete and coupled connector and used with ILME hoods in die cast aluminum with pegs (without adaptor, for further information please contact I.L.M.E. SpA)
- 3.000 hours in salt spray tests (EN ISO 9227: 2012) for bulkhead enclosures with V-TYPE lever and hood with moulded pegs (low number of mating cycles)
- 2.000 hours in salt spray tests (EN ISO 9227: 2012) for surface mounting housings
- temperature limits: -40 °C ... +125 °C on request -60 °C ... +180 °C with silicone gasket (125 °C - 180 °C with RY inserts)

dimensions in mm

C7I



panel cut-out for bulkhead mounting housings in mm



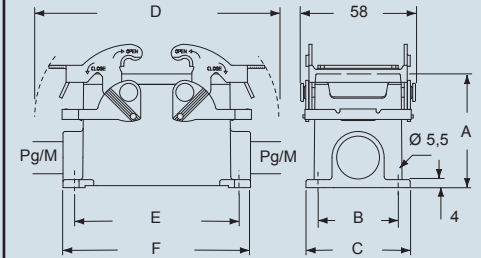
For bulkhead mounting housings, IP66/IP67 protection rating is guaranteed for mounting on a sufficiently rigid panel; use suitable length M4 screws (negligible surface buckling when subjected to tightening couple on the fixing screws of 0,8 - 1,2 Nm or deformation caused by the weight of the complete connector).

In case of insufficient rigidity use of C7.. FL flanges (page 278 catalogue CN.16) is recommended, in which case use suitable length M4 screws and M4 (on the enclosure) and M4 (on the flange) flat/spring washers with M4 locknut.

In addition, the panel surface in contact with the flange gasket of the bulkhead mounting housings must be free from defects (deep scratches, grooves, burrs) that could negatively affect the performance of the gasket.

dimensions in mm

C7P - C7AP and M7P - M7AP



type	A	B	C	D	E	F
M7P 24	63	45	57	169	132	144
M7AP 24	80	45	57	169	132	144



IP69 according to IEC/EN 60529

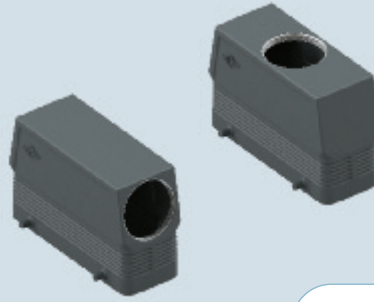
dimensions shown are not binding and may be changed without notice

inserts:	page:
CD 64 poles + ⊕	59 *
CDD 108 poles + ⊕	72 *
CDS 42 poles + ⊕	81 *
CDSH 42 poles + ⊕	12 **
CSH 24 poles + ⊕	94 *
CNE, CSE 24 poles + ⊕	107 *
CCE 24 poles + ⊕	113 *
CSS 24 poles + ⊕	125 *
CQE 46 poles + ⊕	141 *
CQEE 64 poles + ⊕	147 *
CMCE 10+2 (aux) poles + ⊕	152 *
CMSH 10+2 (aux) poles + ⊕	153 *
CX 4/8 and 6/6 poles + ⊕	173 and 175 *
MIXO 6 modules	179-215 *

* refer to catalogue page CN.16
 ** refer to catalogue page News 2016

insert centre distance: 104 x 27 mm

hoods with 4 moulded pegs



3.000 hrs

AVAILABLE 2017

description	part No.	entry M
with pegs, side entry	MHOE 24.25M	25
with pegs, side entry	MHOE 24.32M	32
with pegs, side entry, high construction, without adaptor *	MFOE 24.32M	32
with pegs, side entry, high construction, without adaptor *	MFOE 24.40M	40
with pegs, top entry	MHVE 24.25M **	25
with pegs, top entry	MHVE 24.32M	32
with pegs, top entry	MHVE 24.40M	40
with pegs, top entry, high construction, without adaptor *	MFVE 24.32M	32
with pegs, top entry, high construction, without adaptor *	MFVE 24.40M	40

* enclosure without adaptor, threaded on the body, to be used only with a complete cable gland.

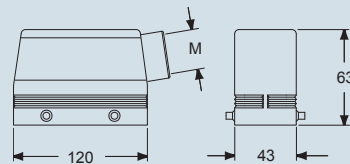
** can only be used with a complete cable gland (to be purchased separately)

TECHNICAL DETAILS:

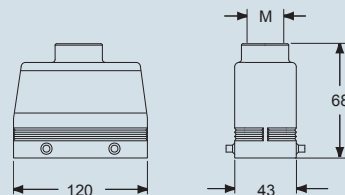
- 3.000 hours in salt spray tests (EN ISO 9227: 2012) for bulkhead enclosures with V-TYPE lever and hood with moulded pegs (low number of mating cycles)
- 2.000 hours in salt spray tests (EN ISO 9227: 2012) with other E-Xtreme® housings
- temperature limits: -40 °C ... +125 °C on request -60 °C ... +180 °C with silicone gasket (125 °C - 180 °C with RY inserts)
- alternatively, hoods with pegs are coupled with fixed enclosures:
 - C7 E-Xtreme®, IP66/IP67, page 46
 - C-TYPE E-Xtreme®, IP66, page 56

dimensions in mm

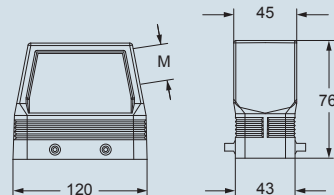
MHOE..M



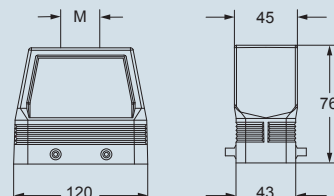
MHVE..M



MFOE..M



MFVE..M



according to the type of lever
 IP69 according to IEC/EN 60529

dimensions shown are not binding
 and may be changed without notice

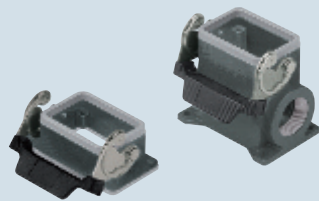
inserts:	page:
CDD 24 poles + ⊕	67
CDS 9 poles + ⊕	78
CSH 6 poles + ⊕	91
CNE, CSE 6 poles + ⊕	104
CCE 6 poles + ⊕	110
CSS 6 poles + ⊕	122
CT, CTSE (16A) * 6 poles + ⊕	130
CQE 10 poles + ⊕	138
MIXO 2 modules	179 - 215

*) only for enclosure CHIE 06 L

refer to catalogue page CN.16

insert centre distance:
44 x 27 mm

housings and cover

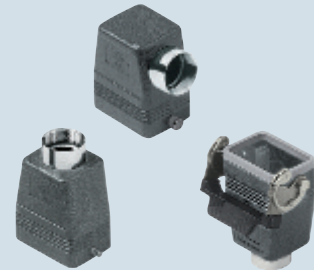


2.000 hrs

AVAILABLE 2017

hoods

with riveted locking pegs



2.000 hrs

AVAILABLE 2017

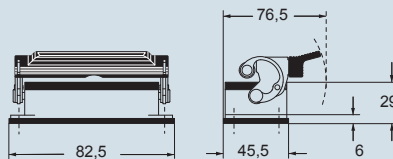
description	part No.		entry M	part No.		entry M
	CHIE 06 L	MAPE 06 L32		MAOE 06 L32	MAVE 06 L32	
bulkhead mounting housing, with lever						
surface mounting housing, with lever, high construction			32			
with pegs, side entry, high construction					32	
with pegs, top entry, high construction					32	
with lever and gasket, side entry, high construction					MAVE 06 LG32	32

TECHNICAL DETAILS:

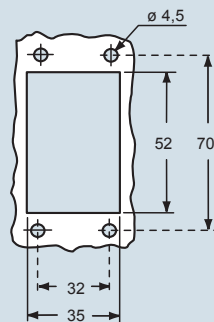
- 2.000 hours in salt spray tests (EN ISO 9227: 2012)
 - temperature limits: -40 °C ... +125 °C
 - mechanical life: ≥ 500 cycles
- Alternatively, hoods with pegs are coupled with fixed enclosures:
- C7 E-Xtreme®, IP66/IP67 stainless steel lever, page 40
 - C-TYPE E-Xtreme®, IP66 stainless steel lever, page 53

dimensions in mm

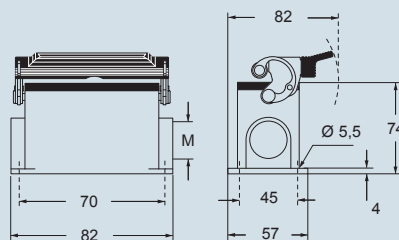
CHIE L



panel cut-out for bulkhead mounting housing in mm

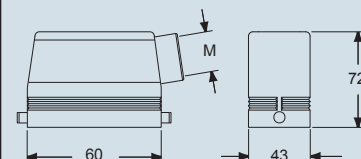


MAPE L

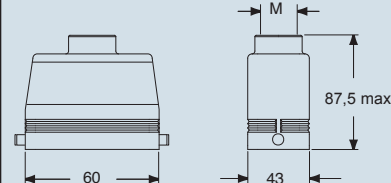


dimensions in mm

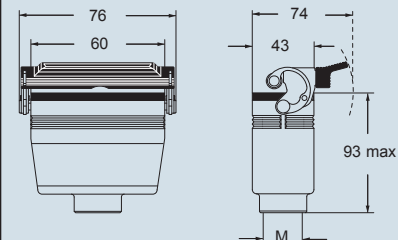
MAOE L



MAVE L



MAVE LG



IP69 according to IEC/EN 60529

dimensions shown are not binding and may be changed without notice

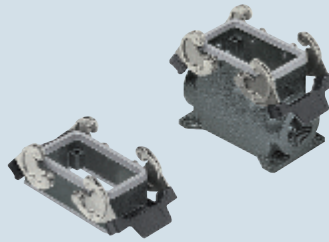
inserts:	page:	
CDD 42 poles + ⊕	69	
CDS 18 poles + ⊕	79	
CSH 10 poles + ⊕	92	
CNE, CSE 10 poles + ⊕	105	
CCE 10 poles + ⊕	111	
CSS 10 poles + ⊕	123	
CT, CTSE (16A) * .. 10 poles + ⊕	131	
CQE 18 poles + ⊕	139	
CMCE 3+2 (aux) poles + ⊕	148	
CMSH 3+2 (aux) poles + ⊕	149	
CX 8/24 poles + ⊕	169	
MIXO 3 modules	179 - 215	

*) only for enclosure CHIE 10

refer to catalogue page CN.16

insert centre distance: 57 x 27 mm

housings and cover



2.000 hrs

AVAILABLE 2017

hoods

with riveted locking pegs



2.000 hrs

AVAILABLE 2017

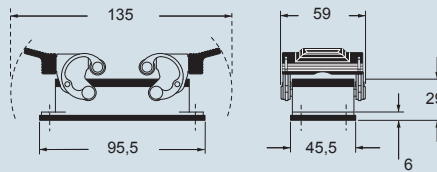
description	part No.		entry M	part No.		entry M
	CHIE 10	MAPE 10.32		MAOE 10.32	MAVE 10 G32	
bulkhead mounting housing, with levers			32			
surface mounting housing, with levers, high construction						
with pegs, side entry, high construction						32
with pegs, top entry, high construction						32
with levers and gasket, top entry, high construction						32

TECHNICAL DETAILS:

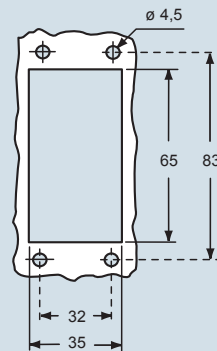
- 2.000 hours in salt spray tests (EN ISO 9227: 2012)
 - temperature limits: -40 °C ... +125 °C
 - mechanical life: ≥ 500 cycles
- Alternatively, hoods with pegs are coupled with fixed enclosures:
- C7 E-Xtreme®, IP66/IP67 stainless steel lever, page 42
 - C-TYPE E-Xtreme®, IP66 stainless steel lever, page 54

dimensions in mm

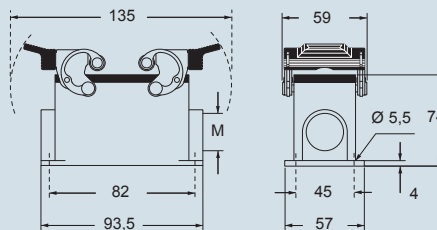
CHIE



panel cut-out for bulkhead mounting housing in mm

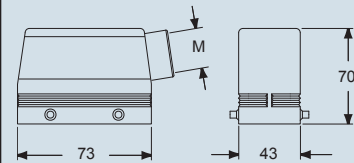


MAPE

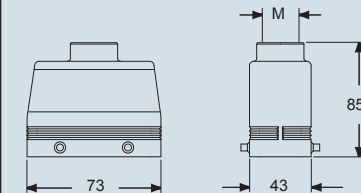


dimensions in mm

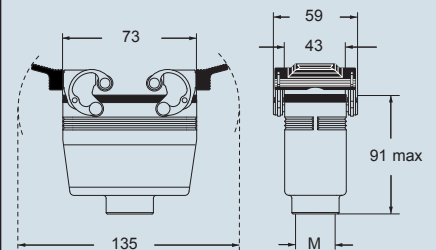
MAOE



MAVE



MAVE G



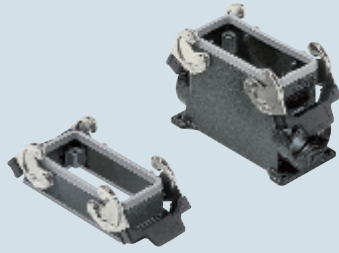
IP69 according to IEC/EN 60529

dimensions shown are not binding and may be changed without notice

inserts:		page:
CD	40 poles + ⊕	57
CT, CTS (10A) *)	40 poles + ⊕	64
CDD	72 poles + ⊕	70
CDS	27 poles + ⊕	80
CSH	16 poles + ⊕	93
CNE, CSE	16 poles + ⊕	106
CCE	16 poles + ⊕	112
CSS	16 poles + ⊕	124
CT, CTSE (16A) *) ..	16 poles + ⊕	132
CQE	32 poles + ⊕	140
CQEE	40 poles + ⊕	146
CMCE	6+2 (aux) poles + ⊕	150
CMSH	6+2 (aux) poles + ⊕	151
CP	6 poles + ⊕	162
CX	6/36 and 12/2 poles + ⊕	170-171
CX	4/0 and 4/2 poles + ⊕	172
MIXO	4 modules	179-215

*) only for enclosure CHIE 16
 refer to catalogue page CN.16
 insert centre distance: 77,5 x 27 mm

housings and cover



2.000 hrs

AVAILABLE 2017

hoods

with riveted locking pegs



2.000 hrs

AVAILABLE 2017

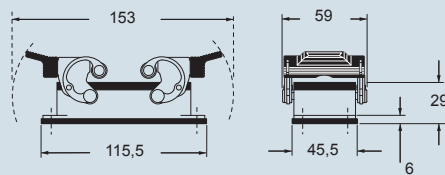
description	part No.	part No.	entry M	part No.	entry M
bulkhead mounting housing, with levers	CHIE 16				
surface mounting housing, with levers, high construction		MAPE 16.32	32		
with pegs, side entry				MHOE 16.25	25
with pegs, side entry				MHOE 16.32	32
with pegs, side entry, high construction				MAOE 16.32	32
with pegs, side entry, high construction				MAOE 16.40	40
with pegs, top entry				MHVE 16.25	25
with pegs, top entry				MHVE 16.32	32
with pegs, top entry, high construction				MAVE 16.32	32
with pegs, top entry, high construction				MAVE 16.40	40
with levers and gasket, top entry, high construction				MAVE 16 G32	32

TECHNICAL DETAILS:

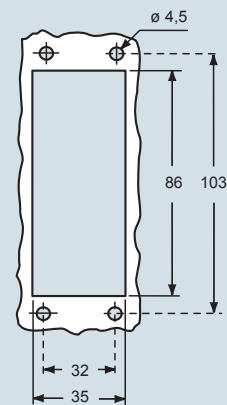
- 2.000 hours in salt spray tests (EN ISO 9227: 2012)
- temperature limits: -40 °C ... +125 °C- mechanical life: ≥ 500 cycles
- Alternatively, hoods with pegs are coupled with fixed enclosures:
- C7 E-Xtreme®, IP66/IP67 stainless steel lever, page 44
- C-TYPE E-Xtreme®, IP66 stainless steel lever, page 55

dimensions in mm

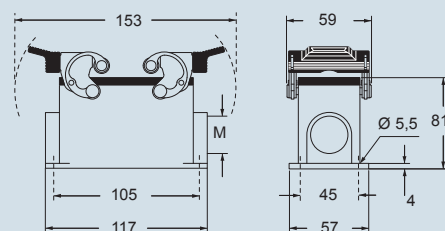
CHIE



panel cut-out for bulkhead mounting housing in mm

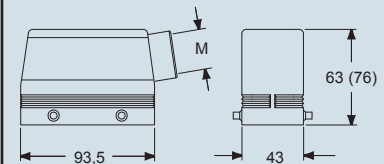


MAPE

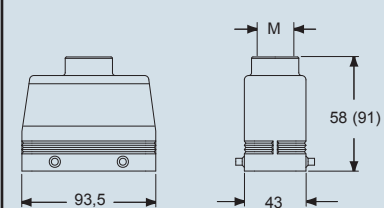


dimensions in mm

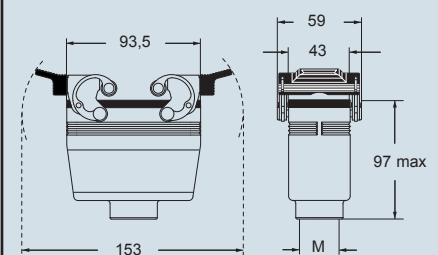
MHOE (MAOE)



MHVE (MAVE)



MAVE G



IP69 according to IEC/EN 60529

dimensions shown are not binding and may be changed without notice

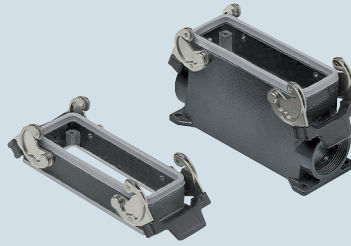
inserts:	page:
CD 64 poles + ⊕	59
CT, CTS (10A) *) 64 poles + ⊕	65
CDD 108 poles + ⊕	72
CDS 42 poles + ⊕	81
CSH 24 poles + ⊕	94
CNE, CSE 24 poles + ⊕	107
CCE 24 poles + ⊕	113
CSS 24 poles + ⊕	125
CT, CTSE (16A) *) 24 poles + ⊕	133
CQE 46 poles + ⊕	141
CQEE 64 poles + ⊕	147
CMCE 10+2 (aux) poles + ⊕	152
CMSH 10+2 (aux) poles + ⊕	153
CX 4/8 and 6/6 poles + ⊕	173 and 175
MIXO 6 modules	179-215

*) only for enclosure CHIE 24

refer to catalogue page CN.16

insert centre distance: 104 x 27 mm

housings and cover



2.000 hrs

AVAILABLE 2017

hoods

with riveted locking pegs



2.000 hrs

AVAILABLE 2017

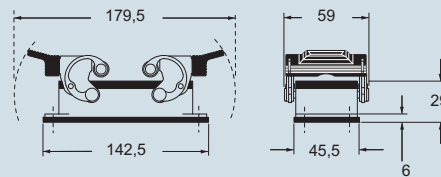
description	part No.	part No.	entry M	part No.	entry M
bulkhead mounting housing, with levers	CHIE 24	MAPE 24.32	32		
surface mounting housing, with levers, high construction					
with pegs, side entry				MHOE 24.25	25
with pegs, side entry				MHOE 24.32	32
with pegs, side entry, high construction				MAOE 24.32	32
with pegs, side entry, high construction				MAOE 24.40	40
with pegs, top entry				MHVE 24.25	25
with pegs, top entry				MHVE 24.32	32
with pegs, top entry, high construction				MAVE 24.32	32
with pegs, top entry, high construction				MAVE 24.40	40
with levers and gasket, top entry, high construction				MAVE 24 G32	32

TECHNICAL DETAILS:

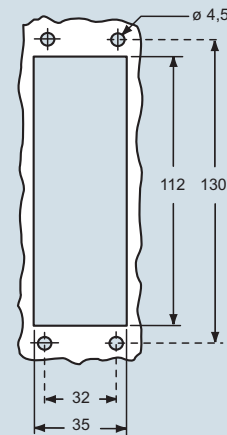
- 2.000 hours in salt spray tests (EN ISO 9227: 2012)
 - temperature limits: -40 °C ... +125 °C
 - mechanical life: ≥ 500 cycles
- Alternatively, hoods with pegs are coupled with fixed enclosures:
- C7 E-Xtreme®, IP66/IP67 stainless steel lever, page 46
 - C-TYPE E-Xtreme®, IP66 stainless steel lever, page 56

dimensions in mm

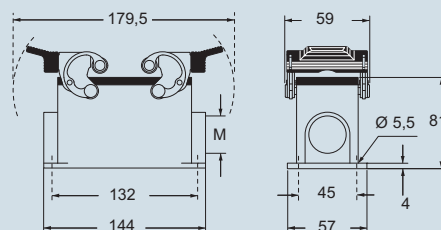
CHIE



panel cut-out for bulkhead mounting housing in mm

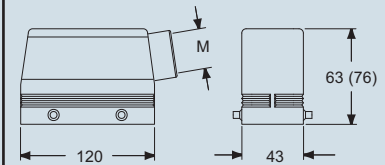


MAPE

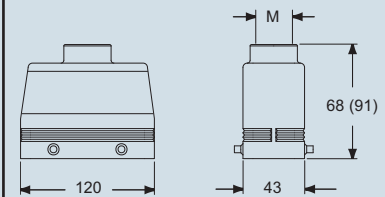


dimensions in mm

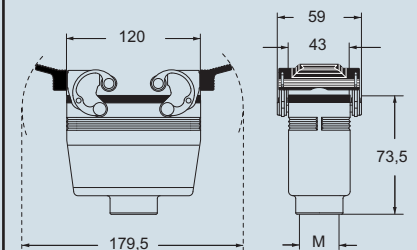
MHOE (MAOE)



MHVE (MAVE)



MAVE G



IP69 according to IEC/EN 60529

dimensions shown are not binding and may be changed without notice

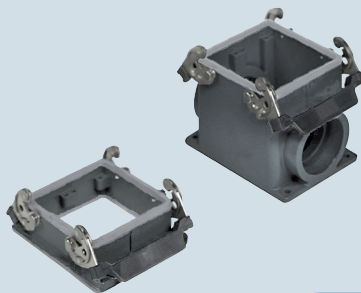
inserts:	page:	housings and cover
CD 80 poles + ⊕	60	
CDD 144 poles + ⊕	73	
CDS 54 poles + ⊕	82	
CSH 32 poles + ⊕	95	
CNE, CSE 32 poles + ⊕	108	
CCE 32 poles + ⊕	114	
CSS 32 poles + ⊕	126	
CTSE (16A) *) 32 poles + ⊕	134	
CQE 64 poles + ⊕	142	
CMCE 12+4 (aux) poles + ⊕	154	
CME 12+4 (aux) poles + ⊕	155	
CMSH 12+4 (aux) poles + ⊕	155	
CP 12 poles + ⊕	163	
MIXO 4 + 4 modules	179-215	

*) only for enclosure CHIE 32

refer to catalogue page CN.16

insert centre distance: 2 x (77,5 x 27) mm

housings and cover



2.000 hrs

AVAILABLE 2017

hoods

with riveted locking pegs



2.000 hrs

AVAILABLE 2017

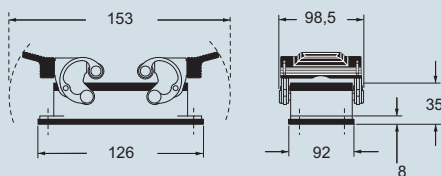
description	part No.	part No.	entry M	part No.	entry M
bulkhead mounting housing, with levers	CHIE 32	MHPE 32.50	50	MHOE 32.40	40
surface mounting housing, with levers				MHVE 32.40	40
with pegs, side entry				MHVE 32 G40	40
with pegs, top entry					
with levers and gasket, top entry					

TECHNICAL DETAILS:

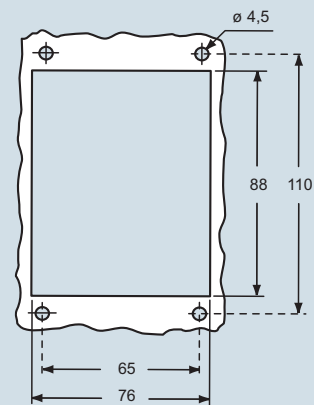
- 2.000 hours in salt spray tests (EN ISO 9227: 2012)
- temperature limits: -40 °C ... +125 °C
- mechanical life: ≥ 500 cycles

dimensions in mm

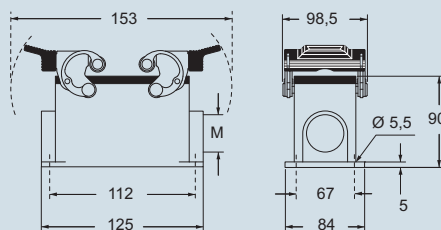
CHIE



panel cut-out for bulkhead mounting housing in mm

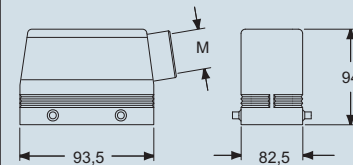


MHPE

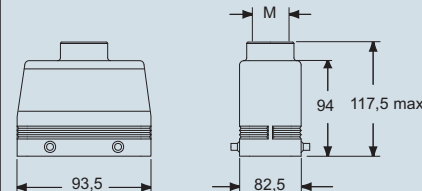


dimensions in mm

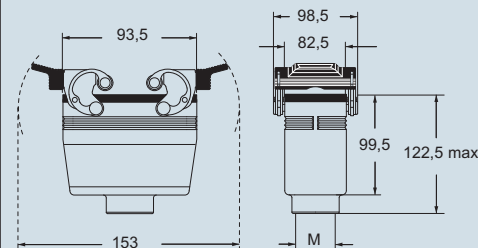
MAOE



MAVE



MAVE G



IP69 according to IEC/EN 60529

dimensions shown are not binding and may be changed without notice

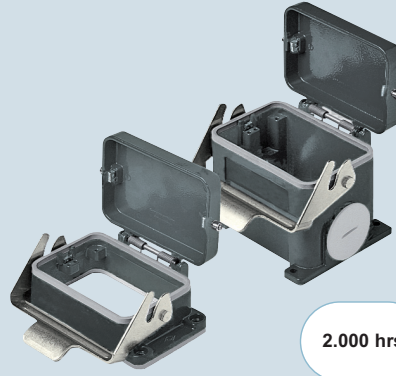
inserts:	page:	
CD 128 poles + ⊕	61	
CDD 216 poles + ⊕	74	
CDS 84 poles + ⊕	83	
CSH 48 poles + ⊕	96	
CNE, CSE 48 poles + ⊕	109	
CCE 48 poles + ⊕	115	
CSS 48 poles + ⊕	127	
CTSE (16A) *) 48 poles + ⊕	135	
CQE 92 poles + ⊕	143	
CMCE 20+4 (aux) poles + ⊕	156	
CME 20+4 (aux) poles + ⊕	157	
CMSH 20+4 (aux) poles + ⊕	157	
CMCE 32+4 (aux) poles + ⊕	160	
CME 32+4 (aux) poles + ⊕	161	
MIXO 6 + 6 modules	179-215	

*) only for enclosure CHIW 48 LS

refer to catalogue page CN.16

insert centre distance: 2 x (104 x 27) mm

bulkhead and surface mounting housings



2.000 hrs

AVAILABLE 2017

hoods with riveted locking pegs



2.000 hrs

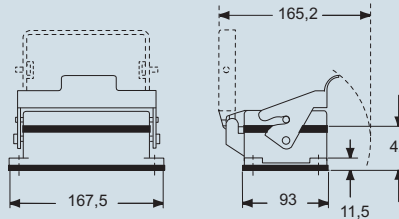
AVAILABLE 2017

description	part No.	part No.	entry M	part No.	entry M
bulkhead mounting housings, with lever and cover	CHIE 48 LS				
with lever and cover		MHPE 48 LS40	40 x 1/2		
side entry, with pegs				MHOE 48 L40	40
top entry, with pegs				MHVE 48 L40	40

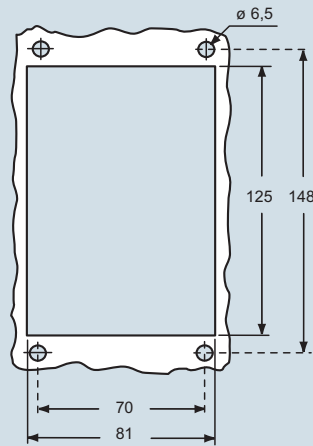
TECHNICAL DETAILS:
 - 2.000 hours in salt spray tests (EN ISO 9227: 2012)
 - temperature limits: -40 °C ... +125 °C
 - mechanical life: ≥ 500 cycles

dimensions in mm

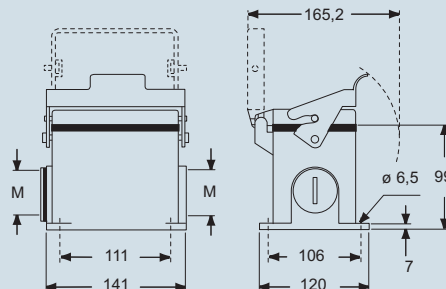
CHIE LS



panel cut-out for bulkhead mounting housings in mm

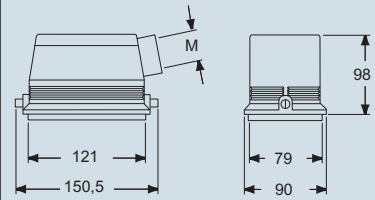


MHPE LS

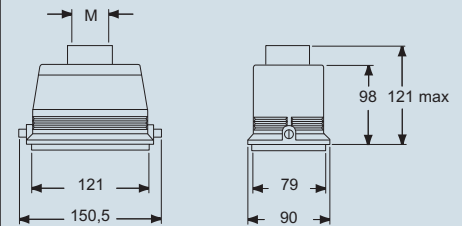


dimensions in mm

MHOE L



MHVE L



IP69 according to IEC/EN 60529

dimensions shown are not binding and may be changed without notice