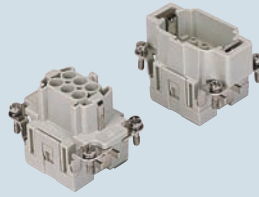


enclosures:  
size "44.27" page:

C-TYPE IP65/IP66 ..... 240 - 243  
 C7 IP67, single lever ..... 274  
 V-TYPE IP65/IP66, single lever 280/284 - 286  
 BIG hoods ..... 304 - 306  
 T-TYPE IP65 insulating ..... 326 - 327  
 T-TYPE / W IP66 insulating ..... 336 - 337  
 HYGIENIC T-TYPE / H IP66/IP69 ..... 350 - 351  
 HYGIENIC T-TYPE / C IP66/IP69, -50 °C 358 - 359  
 W-TYPE for aggressive environments ..... 373  
 EMC ..... 392  
 central lever ..... 404 - 405  
 IP68 ..... 420 - 423  
 LS-TYPE ..... 450 - 451

panel supports: page:  
COB ..... 462 - 463

inserts, crimp connections



16A crimp contacts  
normal and for advanced opening  
silver and gold plated

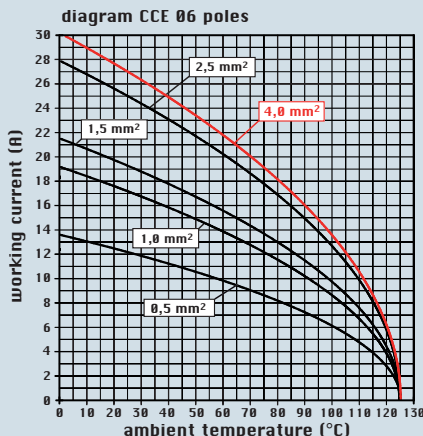


description	part No.	part No.	part No.
without contacts (to be ordered separately) female inserts for female contacts male inserts for male contacts	<b>CCEF 06</b> <b>CCEM 06</b>		
16A female contacts 0,14-0,37 mm <sup>2</sup> AWG 26-22 three grooves 0,5 mm <sup>2</sup> AWG 20 with no grooves 0,75 mm <sup>2</sup> AWG 18 one groove (back side) 1 mm <sup>2</sup> AWG 18 one groove 1,5 mm <sup>2</sup> AWG 16 two grooves 2,5 mm <sup>2</sup> AWG 14 three grooves 3 mm <sup>2</sup> AWG 12 one wide groove 4 mm <sup>2</sup> AWG 12 with no grooves		<b>CCFA 0.3</b> <b>CCFA 0.5</b> <b>CCFA 0.7</b> <b>CCFA 1.0</b> <b>CCFA 1.5</b> <b>CCFA 2.5</b> <b>CCFA 3.0</b> <b>CCFA 4.0</b>	<b>CCFD 0.3</b> <b>CCFD 0.5</b> <b>CCFD 0.7</b> <b>CCFD 1.0</b> <b>CCFD 1.5</b> <b>CCFD 2.5</b> <b>CCFD 3.0</b> <b>CCFD 4.0</b>
16A male contacts 0,14-0,37 mm <sup>2</sup> AWG 26-22 three grooves 0,5 mm <sup>2</sup> AWG 20 with no grooves 0,75 mm <sup>2</sup> AWG 18 one groove (back side) 1 mm <sup>2</sup> AWG 18 one groove 1,5 mm <sup>2</sup> AWG 16 two grooves 2,5 mm <sup>2</sup> AWG 14 three grooves 3 mm <sup>2</sup> AWG 12 one wide groove 4 mm <sup>2</sup> AWG 12 with no grooves		<b>CCMA 0.3</b> <b>CCMA 0.5</b> <b>CCMA 0.7</b> <b>CCMA 1.0</b> <b>CCMA 1.5</b> <b>CCMA 2.5</b> <b>CCMA 3.0</b> <b>CCMA 4.0</b>	<b>CCMD 0.3</b> <b>CCMD 0.5</b> <b>CCMD 0.7</b> <b>CCMD 1.0</b> <b>CCMD 1.5</b> <b>CCMD 2.5</b> <b>CCMD 3.0</b> <b>CCMD 4.0</b>
16A male crimp contacts for advanced opening 0,5 mm <sup>2</sup> AWG 20 with no grooves 0,75 mm <sup>2</sup> AWG 18 one groove (back side) 1 mm <sup>2</sup> AWG 18 one groove 1,5 mm <sup>2</sup> AWG 16 two grooves 2,5 mm <sup>2</sup> AWG 14 three grooves		<b>CC 0.5 AN</b> <b>CC 0.7 AN</b> <b>CC 1.0 AN</b> <b>CC 1.5 AN</b> <b>CC 2.5 AN</b>	

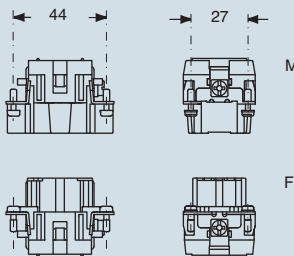
silver plated

gold plated 1)

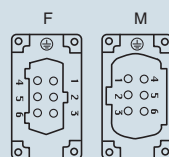
- characteristics according to EN 61984:  
**16A 500V 6kV 3**  
**16A 400/690V 6kV 2**
- UL, CSA, GL, EAC certified
- rated voltage according to UL/CSA: 600V
- insulation resistance: ≥ 10 GΩ
- ambient temperature limit: -40 °C ... +125 °C
- are made of self-extinguishing thermoplastic resin UL 94 V0
- mechanical life: ≥ 500 cycles
- contact resistance: ≤ 1 mΩ
- for maximum current load, see the following load curves inserts, for more information see page 559



dimensions in mm

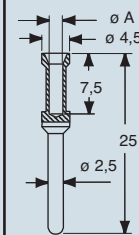


contacts side (front view)

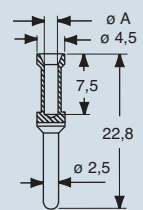


dimensions in mm

CCF and CCM



CC...AN



CCF, CCM and CC..AN contacts

conductor section	conductor slot	conductors stripping length
mm <sup>2</sup>	ø A (mm)	(mm)
0,14-0,37	0,9	7,5
0,5	1,1	7,5
0,75	1,3	7,5
1,0	1,45	7,5
1,5	1,8	7,5
2,5	2,2	7,5
3	2,55	7,5
4	2,85	7,5

1) basic or high thickness gold plating page 481

- for contact crimping instructions, please see the crimping tool section (16A contacts, CCF, CCM and CC...AN series) on pages 534, 538, 544, 546, 548

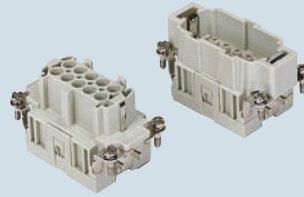
dimensions shown are not binding and may be changed without notice

enclosures:  
size "57.27" page:

C-TYPE IP65/IP66 ..... 244 - 249  
 C7 IP67, two levers ..... 275  
 V-TYPE IP65/IP66, single lever 281/288 - 291  
 BIG hoods ..... 308 - 311  
 T-TYPE IP65 insulating ..... 328 - 329  
 T-TYPE / W IP66 insulating ..... 338 - 339  
 HYGIENIC T-TYPE / H IP66/IP69 ..... 352 - 353  
 HYGIENIC T-TYPE / C IP66/IP69, -50 °C 360 - 361  
 W-TYPE for aggressive environments ..... 374  
 EMC ..... 393  
 central lever ..... 406 - 407  
 IP68 ..... 424 - 427  
 LS-TYPE ..... 452 - 453

panel supports: page:  
COB ..... 462 - 463

inserts, crimp connections



16A crimp contacts  
normal and for advanced opening  
silver and gold plated

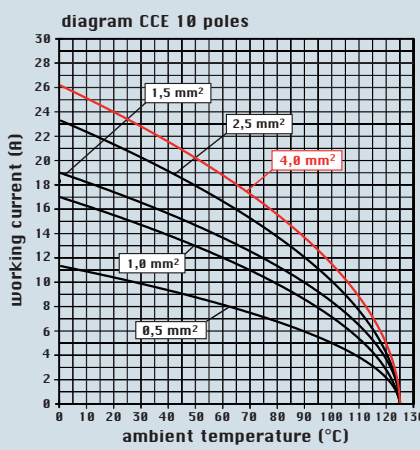


description	part No.	part No.	part No.
without contacts (to be ordered separately) female inserts for female contacts male inserts for male contacts	<b>CCEF 10</b> <b>CCEM 10</b>		
16A female contacts 0,14-0,37 mm <sup>2</sup> AWG 26-22 three grooves 0,5 mm <sup>2</sup> AWG 20 with no grooves 0,75 mm <sup>2</sup> AWG 18 one groove (back side) 1 mm <sup>2</sup> AWG 18 one groove 1,5 mm <sup>2</sup> AWG 16 two grooves 2,5 mm <sup>2</sup> AWG 14 three grooves 3 mm <sup>2</sup> AWG 12 one wide groove 4 mm <sup>2</sup> AWG 12 with no grooves		<b>CCFA 0.3</b> <b>CCFA 0.5</b> <b>CCFA 0.7</b> <b>CCFA 1.0</b> <b>CCFA 1.5</b> <b>CCFA 2.5</b> <b>CCFA 3.0</b> <b>CCFA 4.0</b>	<b>CCFD 0.3</b> <b>CCFD 0.5</b> <b>CCFD 0.7</b> <b>CCFD 1.0</b> <b>CCFD 1.5</b> <b>CCFD 2.5</b> <b>CCFD 3.0</b> <b>CCFD 4.0</b>
16A male contacts 0,14-0,37 mm <sup>2</sup> AWG 26-22 three grooves 0,5 mm <sup>2</sup> AWG 20 with no grooves 0,75 mm <sup>2</sup> AWG 18 one groove (back side) 1 mm <sup>2</sup> AWG 18 one groove 1,5 mm <sup>2</sup> AWG 16 two grooves 2,5 mm <sup>2</sup> AWG 14 three grooves 3 mm <sup>2</sup> AWG 12 one wide groove 4 mm <sup>2</sup> AWG 12 with no grooves		<b>CCMA 0.3</b> <b>CCMA 0.5</b> <b>CCMA 0.7</b> <b>CCMA 1.0</b> <b>CCMA 1.5</b> <b>CCMA 2.5</b> <b>CCMA 3.0</b> <b>CCMA 4.0</b>	<b>CCMD 0.3</b> <b>CCMD 0.5</b> <b>CCMD 0.7</b> <b>CCMD 1.0</b> <b>CCMD 1.5</b> <b>CCMD 2.5</b> <b>CCMD 3.0</b> <b>CCMD 4.0</b>
16A male crimp contacts for advanced opening 0,5 mm <sup>2</sup> AWG 20 with no grooves 0,75 mm <sup>2</sup> AWG 18 one groove (back side) 1 mm <sup>2</sup> AWG 18 one groove 1,5 mm <sup>2</sup> AWG 16 two grooves 2,5 mm <sup>2</sup> AWG 14 three grooves		<b>CC 0.5 AN</b> <b>CC 0.7 AN</b> <b>CC 1.0 AN</b> <b>CC 1.5 AN</b> <b>CC 2.5 AN</b>	

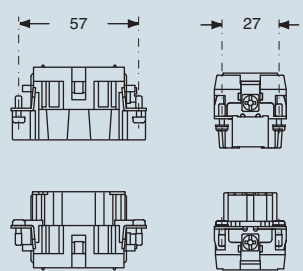
silver plated

gold plated 1)

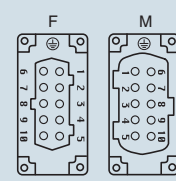
- characteristics according to EN 61984:  
**16A 500V 6kV 3**  
**16A 400/690V 6kV 2**
- UL, CSA, GL, EAC certified
- rated voltage according to UL/CSA: 600V
- insulation resistance: ≥ 10 GΩ
- ambient temperature limit: -40 °C ... +125 °C
- are made of self-extinguishing thermoplastic resin UL 94 V0
- mechanical life: ≥ 500 cycles
- contact resistance: ≤ 1 mΩ
- for maximum current load, see the following load curves inserts, for more information see page 559



dimensions in mm

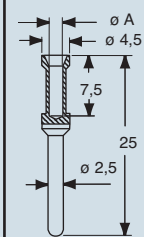


contacts side (front view)

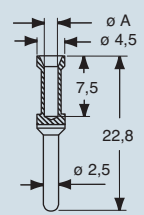


dimensions in mm

CCF and CCM



CC...AN



CCF, CCM and CC...AN contacts

conductor section	conductor slot	conductors stripping length
mm <sup>2</sup>	ø A (mm)	(mm)
0,14-0,37	0,9	7,5
0,5	1,1	7,5
0,75	1,3	7,5
1,0	1,45	7,5
1,5	1,8	7,5
2,5	2,2	7,5
3	2,55	7,5
4	2,85	7,5

1) basic or high thickness gold plating page 481

- for contact crimping instructions, please see the crimping tool section (16A contacts, CCF, CCM and CC...AN series) on pages 534, 538, 544, 546, 548

dimensions shown are not binding and may be changed without notice

enclosures:  
size "77.27" page:

C-TYPE IP65/IP66 .....	250 - 256
C7 IP67, two levers .....	276
V-TYPE IP65/IP66, single lever .....	282/292 - 295
BIG hoods .....	312 - 315
T-TYPE IP65 insulating .....	330 - 331
T-TYPE / W IP66 insulating .....	340 - 341
HYGIENIC T-TYPE / H IP66/IP69 .....	354 - 355
HYGIENIC T-TYPE / C IP66/IP69, -50 °C .....	362 - 363
W-TYPE for aggressive environments .....	375
EMC .....	394
central lever .....	408 - 409
IP68 .....	428 - 431
LS-TYPE .....	454 - 455

panel supports: page:  
COB .....

description

without contacts (to be ordered separately)  
female inserts for female contacts  
male inserts for male contacts

16A female contacts

0,14-0,37 mm <sup>2</sup>	AWG 26-22	three grooves
0,5 mm <sup>2</sup>	AWG 20	with no grooves
0,75 mm <sup>2</sup>	AWG 18	one groove (back side)
1 mm <sup>2</sup>	AWG 18	one groove
1,5 mm <sup>2</sup>	AWG 16	two grooves
2,5 mm <sup>2</sup>	AWG 14	three grooves
3 mm <sup>2</sup>	AWG 12	one wide groove
4 mm <sup>2</sup>	AWG 12	with no grooves

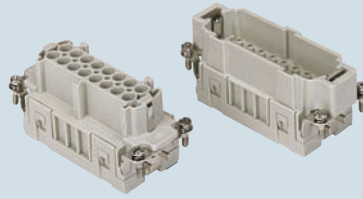
16A male contacts

0,14-0,37 mm <sup>2</sup>	AWG 26-22	three grooves
0,5 mm <sup>2</sup>	AWG 20	with no grooves
0,75 mm <sup>2</sup>	AWG 18	one groove (back side)
1 mm <sup>2</sup>	AWG 18	one groove
1,5 mm <sup>2</sup>	AWG 16	two grooves
2,5 mm <sup>2</sup>	AWG 14	three grooves
3 mm <sup>2</sup>	AWG 12	one wide groove
4 mm <sup>2</sup>	AWG 12	with no grooves

16A male crimp contacts for advanced opening

0,5 mm <sup>2</sup>	AWG 20	with no grooves
0,75 mm <sup>2</sup>	AWG 18	one groove (back side)
1 mm <sup>2</sup>	AWG 18	one groove
1,5 mm <sup>2</sup>	AWG 16	two grooves
2,5 mm <sup>2</sup>	AWG 14	three grooves

inserts, crimp connections



part No.

CCEF 16  
CCEM 16

16A crimp contacts  
normal and for advanced opening  
silver and gold plated



part No.

part No.

CCFA 0.3  
CCFA 0.5  
CCFA 0.7  
CCFA 1.0  
CCFA 1.5  
CCFA 2.5  
CCFA 3.0  
CCFA 4.0

silver plated

CCFD 0.3  
CCFD 0.5  
CCFD 0.7  
CCFD 1.0  
CCFD 1.5  
CCFD 2.5  
CCFD 3.0  
CCFD 4.0

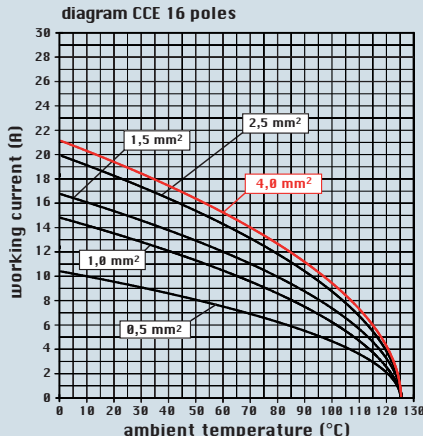
gold plated 1)

CCMA 0.3  
CCMA 0.5  
CCMA 0.7  
CCMA 1.0  
CCMA 1.5  
CCMA 2.5  
CCMA 3.0  
CCMA 4.0

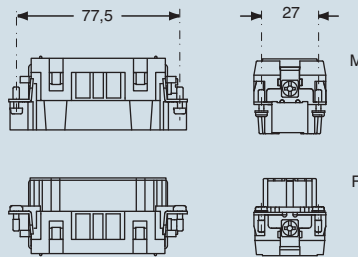
CCMD 0.3  
CCMD 0.5  
CCMD 0.7  
CCMD 1.0  
CCMD 1.5  
CCMD 2.5  
CCMD 3.0  
CCMD 4.0

CC 0.5 AN  
CC 0.7 AN  
CC 1.0 AN  
CC 1.5 AN  
CC 2.5 AN

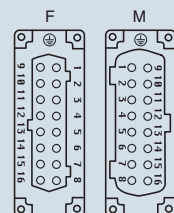
- characteristics according to EN 61984:  
**16A 500V 6kV 3**  
**16A 400/690V 6kV 2**
- UL, CSA, GL, EAC certified
- rated voltage according to UL/CSA: 600V
- insulation resistance: ≥ 10 GΩ
- ambient temperature limit: -40 °C ... +125 °C
- are made of self-extinguishing thermoplastic resin UL 94 V0
- mechanical life: ≥ 500 cycles
- contact resistance: ≤ 1 mΩ
- for maximum current load, see the following load curves inserts, for more information see page 559



dimensions in mm

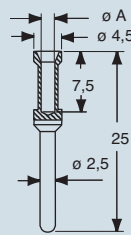


contacts side (front view)

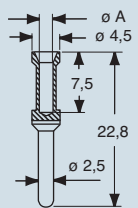


dimensions in mm

CCF and CCM



CC...AN



CCF, CCM and CC...AN contacts

conductor section	conductor slot	conductors stripping length
mm <sup>2</sup>	ø A (mm)	(mm)
0,14-0,37	0,9	7,5
0,5	1,1	7,5
0,75	1,3	7,5
1,0	1,45	7,5
1,5	1,8	7,5
2,5	2,2	7,5
3	2,55	7,5
4	2,85	7,5

1) basic or high thickness gold plating page 481

- for contact crimping instructions, please see the crimping tool section (16A contacts, CCF, CCM and CC...AN series) on pages 534, 538, 544, 546, 548

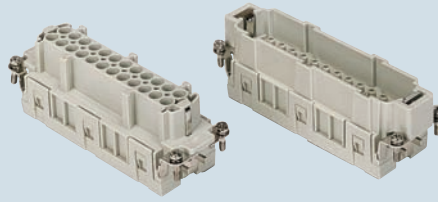
dimensions shown are not binding and may be changed without notice

enclosures:  
size "104.27" page:

C-TYPE IP65/IP66 ..... 258 - 266  
C7 IP67, two levers ..... 277  
V-TYPE IP65/IP66, single lever 283296 - 299  
BIG hoods ..... 316 - 319  
T-TYPE IP65 insulating ..... 332 - 333  
T-TYPE / W IP66 insulating ..... 342 - 343  
HYGIENIC T-TYPE / H IP66/IP69 ..... 356 - 357  
HYGIENIC T-TYPE / C IP66/IP69, -50 °C 364 - 365  
W-TYPE for aggressive environments ..... 376  
EMC ..... 395  
central lever ..... 410 - 412  
IP68 ..... 432 - 435  
LS-TYPE ..... 456 - 457

panel supports: page:  
COB ..... 462 - 463

inserts, crimp connections



16A crimp contacts  
normal and for advanced opening  
silver and gold plated



description	part No.	part No.	part No.
-------------	----------	----------	----------

without contacts (to be ordered separately)  
female inserts for female contacts  
male inserts for male contacts

CCEF 24  
CCEM 24

16A female contacts

0,14-0,37 mm <sup>2</sup>	AWG 26-22	three grooves
0,5 mm <sup>2</sup>	AWG 20	with no grooves
0,75 mm <sup>2</sup>	AWG 18	one groove (back side)
1 mm <sup>2</sup>	AWG 18	one groove
1,5 mm <sup>2</sup>	AWG 16	two grooves
2,5 mm <sup>2</sup>	AWG 14	three grooves
3 mm <sup>2</sup>	AWG 12	one wide groove
4 mm <sup>2</sup>	AWG 12	with no grooves

16A male contacts

0,14-0,37 mm <sup>2</sup>	AWG 26-22	three grooves
0,5 mm <sup>2</sup>	AWG 20	with no grooves
0,75 mm <sup>2</sup>	AWG 18	one groove (back side)
1 mm <sup>2</sup>	AWG 18	one groove
1,5 mm <sup>2</sup>	AWG 16	two grooves
2,5 mm <sup>2</sup>	AWG 14	three grooves
3 mm <sup>2</sup>	AWG 12	one wide groove
4 mm <sup>2</sup>	AWG 12	with no grooves

16A male crimp contacts for advanced opening

0,5 mm <sup>2</sup>	AWG 20	with no grooves
0,75 mm <sup>2</sup>	AWG 18	one groove (back side)
1 mm <sup>2</sup>	AWG 18	one groove
1,5 mm <sup>2</sup>	AWG 16	two grooves
2,5 mm <sup>2</sup>	AWG 14	three grooves

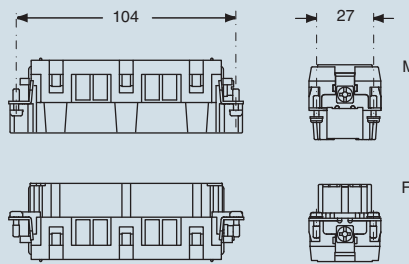
CCFA 0.3	silver plated	CCFD 0.3	gold plated 1)
CCFA 0.5		CCFD 0.5	
CCFA 0.7		CCFD 0.7	
CCFA 1.0		CCFD 1.0	
CCFA 1.5		CCFD 1.5	
CCFA 2.5		CCFD 2.5	
CCFA 3.0		CCFD 3.0	
CCFA 4.0	CCFD 4.0		

CCMA 0.3	silver plated	CCMD 0.3	gold plated 1)
CCMA 0.5		CCMD 0.5	
CCMA 0.7		CCMD 0.7	
CCMA 1.0		CCMD 1.0	
CCMA 1.5		CCMD 1.5	
CCMA 2.5		CCMD 2.5	
CCMA 3.0		CCMD 3.0	
CCMA 4.0	CCMD 4.0		

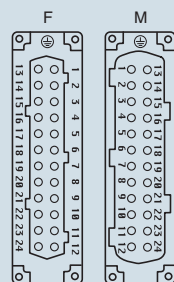
CC 0.5 AN  
CC 0.7 AN  
CC 1.0 AN  
CC 1.5 AN  
CC 2.5 AN

- characteristics according to EN 61984:  
**16A 500V 6kV 3**  
**16A 400/690V 6kV 2**
- UL, CSA, GL, EAC certified
- rated voltage according to UL/CSA: 600V
- insulation resistance: ≥ 10 GΩ
- ambient temperature limit: -40 °C ... +125 °C
- are made of self-extinguishing thermoplastic resin UL 94 V0
- mechanical life: ≥ 500 cycles
- contact resistance: ≤ 1 mΩ
- for maximum current load, see the following load curves inserts, for more information see page 559

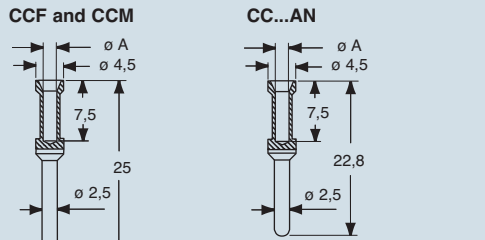
dimensions in mm



contacts side (front view)



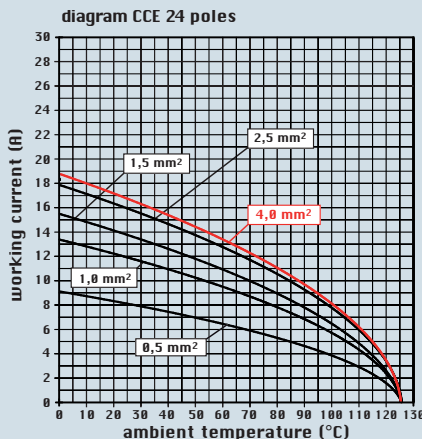
dimensions in mm



CCF, CCM and CC...AN contacts

conductor section	conductor slot	conductors stripping length
mm <sup>2</sup>	ø A (mm)	(mm)
0,14-0,37	0,9	7,5
0,5	1,1	7,5
0,75	1,3	7,5
1,0	1,45	7,5
1,5	1,8	7,5
2,5	2,2	7,5
3	2,55	7,5
4	2,85	7,5

1) basic or high thickness gold plating page 481



- for contact crimping instructions, please see the crimping tool section (16A contacts, CCF, CCM and CC...AN series) on pages 534, 538, 544, 546, 548

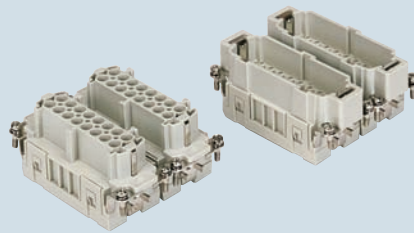
enclosures:  
size "77.62"

page:

C-TYPE IP65/IP66 ..... 267 - 270

W-TYPE for aggressive environments ..... 377

inserts, crimp connections



16A crimp contacts  
normal and for advanced opening  
silver and gold plated



- for contact crimping instructions, please see the crimping tool section (16A contacts, CCF, CCM and CC...AN series) on pages 534, 538, 544, 546, 548

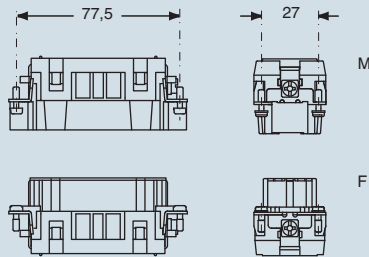
description	part No.	part No.	part No.	part No.
without contacts (to be ordered separately) female inserts, No. (1-16) and (17-32) male inserts, No. (1-16) and (17-32)	<b>CCEF 16</b> <b>CCEM 16</b>	<b>CCEF 16 N</b> <b>CCEM 16 N</b>		
16A female contacts 0,14-0,37 mm <sup>2</sup> AWG 26-22 three grooves 0,5 mm <sup>2</sup> AWG 20 with no grooves 0,75 mm <sup>2</sup> AWG 18 one groove (back side) 1 mm <sup>2</sup> AWG 18 one groove 1,5 mm <sup>2</sup> AWG 16 two grooves 2,5 mm <sup>2</sup> AWG 14 three grooves 3 mm <sup>2</sup> AWG 12 one wide groove 4 mm <sup>2</sup> AWG 12 with no grooves			<b>CCFA 0.3</b> <b>CCFA 0.5</b> <b>CCFA 0.7</b> <b>CCFA 1.0</b> <b>CCFA 1.5</b> <b>CCFA 2.5</b> <b>CCFA 3.0</b> <b>CCFA 4.0</b>	<b>CCFD 0.3</b> <b>CCFD 0.5</b> <b>CCFD 0.7</b> <b>CCFD 1.0</b> <b>CCFD 1.5</b> <b>CCFD 2.5</b> <b>CCFD 3.0</b> <b>CCFD 4.0</b>
16A male contacts 0,14-0,37 mm <sup>2</sup> AWG 26-22 three grooves 0,5 mm <sup>2</sup> AWG 20 with no grooves 0,75 mm <sup>2</sup> AWG 18 one groove (back side) 1 mm <sup>2</sup> AWG 18 one groove 1,5 mm <sup>2</sup> AWG 16 two grooves 2,5 mm <sup>2</sup> AWG 14 three grooves 3 mm <sup>2</sup> AWG 12 one wide groove 4 mm <sup>2</sup> AWG 12 with no grooves			<b>CCMA 0.3</b> <b>CCMA 0.5</b> <b>CCMA 0.7</b> <b>CCMA 1.0</b> <b>CCMA 1.5</b> <b>CCMA 2.5</b> <b>CCMA 3.0</b> <b>CCMA 4.0</b>	<b>CCMD 0.3</b> <b>CCMD 0.5</b> <b>CCMD 0.7</b> <b>CCMD 1.0</b> <b>CCMD 1.5</b> <b>CCMD 2.5</b> <b>CCMD 3.0</b> <b>CCMD 4.0</b>
16A male crimp contacts for advanced opening 0,5 mm <sup>2</sup> AWG 20 with no grooves 0,75 mm <sup>2</sup> AWG 18 one groove (back side) 1 mm <sup>2</sup> AWG 18 one groove 1,5 mm <sup>2</sup> AWG 16 two grooves 2,5 mm <sup>2</sup> AWG 14 three grooves			<b>CC 0.5 AN</b> <b>CC 0.7 AN</b> <b>CC 1.0 AN</b> <b>CC 1.5 AN</b> <b>CC 2.5 AN</b>	

silver plated

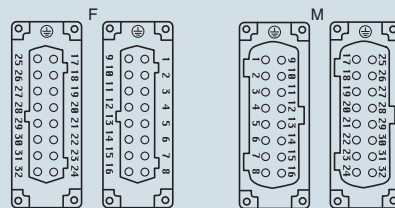
gold plated 1)

- characteristics according to EN 61984:  
**16A 500V 6kV 3**  
**16A 400/690V 6kV 2**
- UL, CSA, GL, EAC certified
- rated voltage according to UL/CSA: 600V
- insulation resistance: ≥ 10 GΩ
- ambient temperature limit: -40 °C ... +125 °C
- are made of self-extinguishing thermoplastic resin UL 94 V0
- mechanical life: ≥ 500 cycles
- contact resistance: ≤ 1 mΩ
- for maximum current load, see the following load curves inserts, for more information see page 559

dimensions in mm

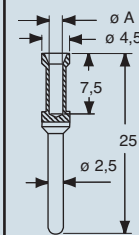


contacts side (front view)

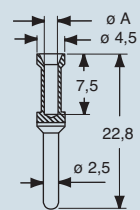


dimensions in mm

CCF and CCM



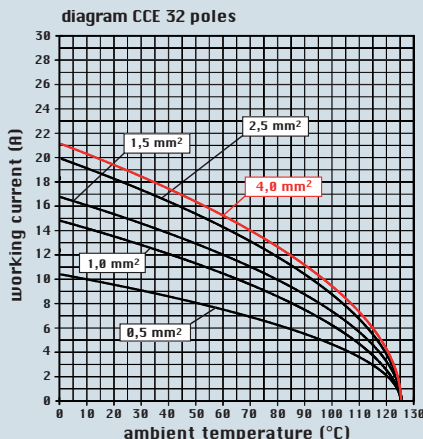
CC...AN



CCF, CCM and CC...AN contacts

conductor section	conductor slot	conductors stripping length
mm <sup>2</sup>	ø A (mm)	(mm)
0,14-0,37	0,9	7,5
0,5	1,1	7,5
0,75	1,3	7,5
1,0	1,45	7,5
1,5	1,8	7,5
2,5	2,2	7,5
3	2,55	7,5
4	2,85	7,5

1) basic or high thickness gold plating page 481

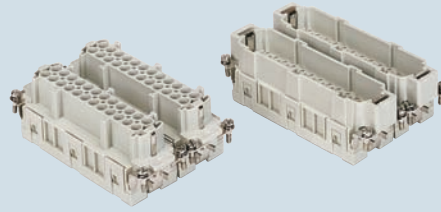


dimensions shown are not binding and may be changed without notice

enclosures:  
size "104.62" page:

C-TYPE IP65/IP66..... 271  
W-TYPE for aggressive environments 378

inserts, crimp connections



16A crimp contacts  
normal and for advanced opening  
silver and gold plated



- for contact crimping instructions, please see the crimping tool section (16A contacts, CCF, CCM and CC...AN series) on pages 534, 538, 544, 546, 548

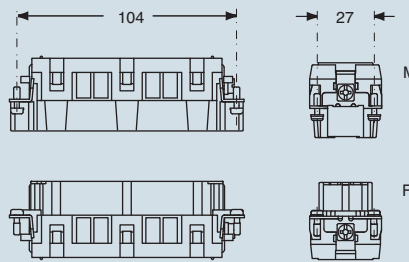
description	part No.	part No.	part No.	part No.
without contacts (to be ordered separately) female inserts, No. (1-24) and (25-48) male inserts, No. (1-24) and (25-48)	<b>CCEF 24</b> <b>CCEM 24</b>	<b>CCEF 24 N</b> <b>CCEM 24 N</b>		
16A female contacts 0,14-0,37 mm <sup>2</sup> AWG 26-22 three grooves 0,5 mm <sup>2</sup> AWG 20 with no grooves 0,75 mm <sup>2</sup> AWG 18 one groove (back side) 1 mm <sup>2</sup> AWG 18 one groove 1,5 mm <sup>2</sup> AWG 16 two grooves 2,5 mm <sup>2</sup> AWG 14 three grooves 3 mm <sup>2</sup> AWG 12 one wide groove 4 mm <sup>2</sup> AWG 12 with no grooves			<b>CCFA 0.3</b> <b>CCFA 0.5</b> <b>CCFA 0.7</b> <b>CCFA 1.0</b> <b>CCFA 1.5</b> <b>CCFA 2.5</b> <b>CCFA 3.0</b> <b>CCFA 4.0</b>	<b>CCFD 0.3</b> <b>CCFD 0.5</b> <b>CCFD 0.7</b> <b>CCFD 1.0</b> <b>CCFD 1.5</b> <b>CCFD 2.5</b> <b>CCFD 3.0</b> <b>CCFD 4.0</b>
16A male contacts 0,14-0,37 mm <sup>2</sup> AWG 26-22 three grooves 0,5 mm <sup>2</sup> AWG 20 with no grooves 0,75 mm <sup>2</sup> AWG 18 one groove (back side) 1 mm <sup>2</sup> AWG 18 one groove 1,5 mm <sup>2</sup> AWG 16 two grooves 2,5 mm <sup>2</sup> AWG 14 three grooves 3 mm <sup>2</sup> AWG 12 one wide groove 4 mm <sup>2</sup> AWG 12 with no grooves			<b>CCMA 0.3</b> <b>CCMA 0.5</b> <b>CCMA 0.7</b> <b>CCMA 1.0</b> <b>CCMA 1.5</b> <b>CCMA 2.5</b> <b>CCMA 3.0</b> <b>CCMA 4.0</b>	<b>CCMD 0.3</b> <b>CCMD 0.5</b> <b>CCMD 0.7</b> <b>CCMD 1.0</b> <b>CCMD 1.5</b> <b>CCMD 2.5</b> <b>CCMD 3.0</b> <b>CCMD 4.0</b>
16A male crimp contacts for advanced opening 0,5 mm <sup>2</sup> AWG 20 with no grooves 0,75 mm <sup>2</sup> AWG 18 one groove (back side) 1 mm <sup>2</sup> AWG 18 one groove 1,5 mm <sup>2</sup> AWG 16 two grooves 2,5 mm <sup>2</sup> AWG 14 three grooves			<b>CC 0.5 AN</b> <b>CC 0.7 AN</b> <b>CC 1.0 AN</b> <b>CC 1.5 AN</b> <b>CC 2.5 AN</b>	

silver plated

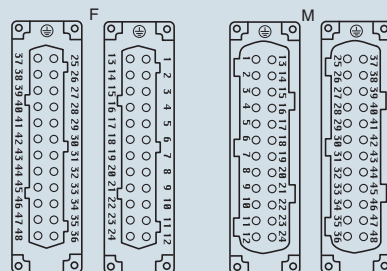
gold plated 1)

- characteristics according to EN 61984:  
**16A 500V 6kV 3**  
**16A 400/690V 6kV 2**
- UL, CSA, GL, EAC certified
- rated voltage according to UL/CSA: 600V
- insulation resistance: ≥ 10 GΩ
- ambient temperature limit: -40 °C ... +125 °C
- are made of self-extinguishing thermoplastic resin UL 94 V0
- mechanical life: ≥ 500 cycles
- contact resistance: ≤ 1 mΩ
- for maximum current load, see the following load curves inserts, for more information see page 559

dimensions in mm

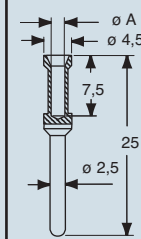


contacts side (front view)

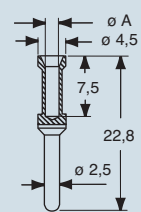


dimensions in mm

CCF and CCM



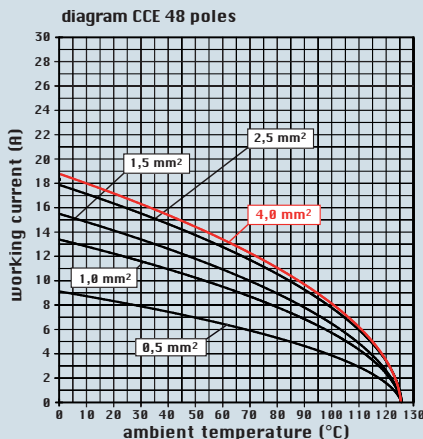
CC...AN



CCF, CCM and CC...AN contacts

conductor section	conductor slot	conductors stripping length
mm <sup>2</sup>	ø A (mm)	(mm)
0,14-0,37	0,9	7,5
0,5	1,1	7,5
0,75	1,3	7,5
1,0	1,45	7,5
1,5	1,8	7,5
2,5	2,2	7,5
3	2,55	7,5
4	2,85	7,5

1) basic or high thickness gold plating page 481



dimensions shown are not binding and may be changed without notice

CCE