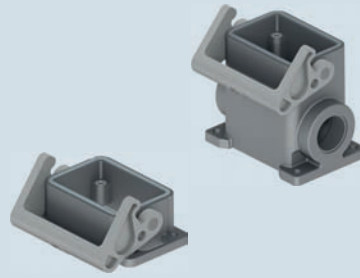


inserts:	page:
CDD 24 poles + ⊕	67
CDS 9 poles + ⊕	78
CSH 6 poles + ⊕	91
CNE, CSE 6 poles + ⊕	104
CCE 6 poles + ⊕	110
CSS 6 poles + ⊕	122
CT, CTSE (16A) *) 6 poles + ⊕	130
CQE 10 poles + ⊕	138
MIXO 2 modules	179 - 215

*) only for standard insulating version THIW

insert centre distance:
44 x 27 mm

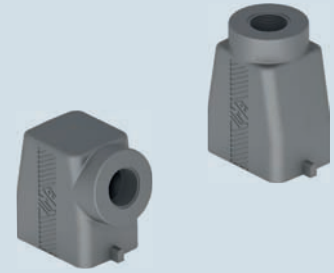
housings with single lever



VITON®
gasket

NEW

hoods with 2 pegs

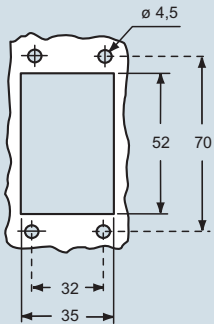


description	part No.	entry M
bulkhead mounting housing with thermoplastic levers	THIW 06 L	
surface mounting housing with thermoplastic levers	TAPW 06 L25	25
surface mounting housing with thermoplastic levers	TAPW 06 L32	32
with pegs, side entry		
with pegs, side entry		

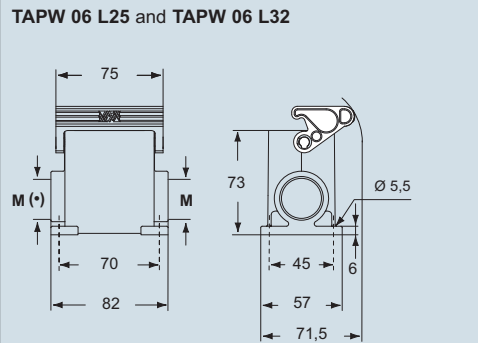
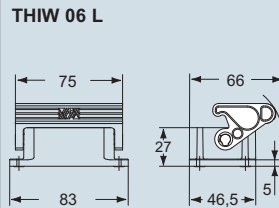
part No.	entry M
THIW 06 L	
TAPW 06 L25	25
TAPW 06 L32	32

part No.	entry M
TMAO 06 L25	25
TMAO 06 L32	32
TMAV 06 L25	25
TMAV 06 L32	32

panel cut-out for bulkhead mounting housing in mm

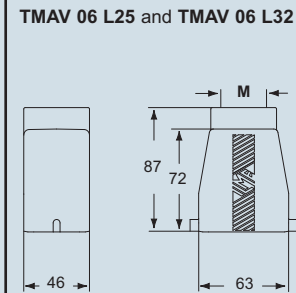
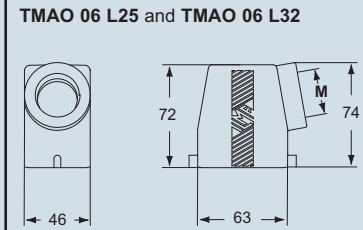


dimensions in mm



(*) The surface mounting, high construction housings are supplied with an open threaded entry (*) and diametrically opposite a closed threaded entry which can be opened by the user if required (with suitable tool).

dimensions in mm



ambient temperature limits -40 °C / +90 °C

dimensions shown are not binding and may be changed without notice

inserts:	page:
CDD 24 poles + ⊕	67
CDS 9 poles + ⊕	78
CSH 6 poles + ⊕	91
CNE, CSE 6 poles + ⊕	104
CCE 6 poles + ⊕	110
CSS 6 poles + ⊕	122
CT, CTSE (16A) * 6 poles + ⊕	130
CQE 10 poles + ⊕	138
MIXO 2 modules	179 - 215

*) only for standard insulating version THIW

insert centre distance:
44 x 27 mm

hoods with single lever top entry



VITON®
gasket

NEW

covers



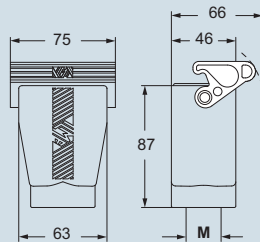
VITON®
gasket

NEW

description	part No.		entry	part No.	part No.
			M	(with eyelet)	(with loop)
with thermoplastic lever and gasket	TAVW 06 LG25	25			
with thermoplastic lever and gasket	TAVW 06 LG32	32			
with pegs				TCHC 06 L	TCHC 06 SL
with thermoplastic lever and gasket					THCW 06 LG

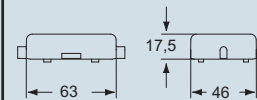
dimensions in mm

TAVW 06 LG25 e TAVW 06 LG32

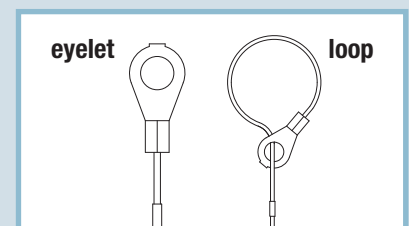
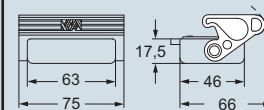


dimensions in mm

TCHC 06 L (SL)



THCW 06 LG



ambient temperature limits -40 °C / +90 °C

dimensions shown are not binding
and may be changed without notice